

94 Shorthorn Sires

10 Yearling Shorthorn Bulls

11 Durham Reds

11 Durham Blacks

10 Yearling Durham Blacks

The Grove.

Australia's Premier Performance Shorthorn Herd



LOT 3 THE GROVE L0443 (SR) (P)

34th Annual On-Property Bull Sale

At 'Myall Grove', Condamine, Queensland

THURSDAY 14TH SEPTEMBER 2017, 1PM



Lanstal Ringing the Bell in the West

Setting benchmarks for their operation in order to be able to objectively identify where they sit within the WA and Australian beef industry has been a primary objective for Marc Ross and his team from the Emanuel family's Pinjarra and Esperance operations.

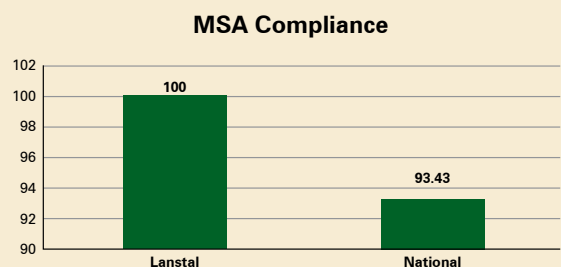
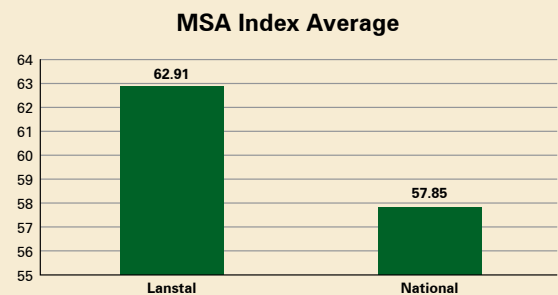
Everything pointed to them hitting industry specs, however Marc believed the only way to really know was to hold some back from their annual weaner turnoff, grass finish them and have them assessed under the MSA program. The ones held back were not from the top, but the bottom of his annual draft, as he still wanted to line up his best for public scrutiny. The results were incredible and a real boost of confidence for all his team. As far as future marketing goes, it opens up real opportunity and confidence to increase the competition on their annual draft.

These results see the Lanstal herd sitting in the top 10% nationally – a great benchmark for the Lanstal herd, especially considering the steers consigned were the bottoms of the drop. Probably the highlight was the 100% MSA compliance with no drafting out tail enders etc.

Congratulations to Marc and his team on striving and successfully implementing the program to achieve their goals. It is a real credit to the management in place to achieve such results from a very large commercial operation.

Pictured: Duncan Crapella and Marc Ross with some of the Lanstal cow herd.

Setting Benchmarks for the Lanstal Herd Lanstal Results vs National Results



The Grove.

Australia's Premier Performance Shorthorn Herd

34th Annual On-Property Bull Sale
At 'Myall Grove', Condamine, Qld

THURSDAY 14TH SEPTEMBER 2017

COMMENCING 1PM

- **26 SPECIALLY SELECTED PERFORMANCE RECORDED SIRES FOR AUCTION** *Page 8*
- **68 SPECIALLY SELECTED PERFORMANCE RECORDED SHORTHORN SIRES** *Page 15*
- **10 SPECIALLY SELECTED PERFORMANCE RECORDED YEARLING SHORTHORN BULLS** *Page 33*
- **11 SPECIALLY SELECTED PERFORMANCE RECORDED DURHAM REDS** *Page 36*
- **11 SPECIALLY SELECTED PERFORMANCE RECORDED DURHAM BLACKS** *Page 39*
- **10 SPECIALLY SELECTED PERFORMANCE RECORDED YEARLING DURHAM BLACKS** *Page 42*

SALE INFORMATION

1. No dipping is required for purchases as property is situated in clean area.
2. The Grove is confirmed free of brucellosis (CF) and is TB free (monitored negative).
3. All bulls have been evaluated for structural and reproductive soundness, and semen tested by our veterinary surgeon Dr Jemma Postle.
4. All bulls are fully inoculated for Vibrio, 7-in-1, 3-day sickness (BEF), Pestigard and blooded for Redwater.
5. All bulls have been scanned for EMA, IMF% and Fat Depth.
6. The sale is GST exclusive; (i.e. 10% will be added to the knockdown price).
7. Insurance representatives will be available on sale day. We strongly recommend insurance for bulls awaiting delivery.



Terry Ryan 0418 260 063
Colby Ede: 0417 265 980



Russell Jorgenson: 0428 880 411
Harvey Weyman-Jones: 0414 941 788
Peter Brazier: 0407 525 983
Mark Duthie: 0448 016 950

The Grove.

- **Spencer Morgan** Tel: 07 4627 7262 Mob: 0427 277 262
- **Godfrey Morgan** Tel: 07 4627 7288 Mob: 0427 277 151
- Email: thegroveshorthorns@bigpond.com

2% REBATE to outside agents advising in writing and settling within 7 days of sale. Any outside agent travelling a distance to the sale with their client should contact the vendor prior for approval of a larger rebate.

www.thegroveonline.com.au

Like The Grove Shorthorns on Facebook



WELCOME TO THE GROVE'S 34TH ANNUAL ON-PROPERTY BULL SALE

WELCOME TO "MYALL GROVE" for The Grove's 34th Annual On-Property Bull Sale. It is with great pride that we offer this draft of fully performance recorded Shorthorn and Durham Bulls for your appraisal. We feel they are a very strong lineup of industry relevant genetics. Our ultrasound scan results in early June really backed up our breeding program with consistently high IMF percentages, combined with good EMA and Fat depths. Some 60% of the Shorthorn catalogue lies in the top 25% of the MSA B2 Index, including our top 20%, which lie within the top 5% of the breed. This gives us great confidence in the fact that the lineup of bulls we have on offer has the potential to add high levels of genetic gain over a very wide spectrum of cows.

As in the previous few years, we will again be using the electronic Helmsman system to sell the majority of the bulls. We will kick off the sale with an open auction of 26 bulls that will be a cross section from the Shorthorn catalogue. Hopefully this will allow some of our clients who are chasing larger runs of bulls to secure a couple during this period and take a little pressure off having to watch as many lots in the Helmsman section. We trust this will help allow you to actively participate on all of your selections and go home with your desired lots. Unfortunately we won't have the expertise of Bob Gahan on hand this year as he is currently in Sydney partaking in a new trial for Melanoma treatment. All of us at The Grove

are sending him every bit of positive energy we can and we look forward to having Bobby back on board in 2018.

2017 has as per usual been a mixed bag for beef producers across the country. Some have managed a season of sorts and have enjoyed the strong demand for their beef whilst, like every year, some have missed the season again. Some parts of the central west are entering their fifth year without a wet season. Surely their time is coming this year and it will be such a relief for all when it does.

The Shorthorn breed has seen another strong year, with demand for feeder steers for the Thousand Guineas brand having seen a price premium over Angus steers of 5c/kg for the greater part of the year. Probably the most exciting growth has come for surplus heifers. They too are being sought after to feed for the Thousand Guineas brand, as well as seeing good demand from breeders who are looking to produce for the F1 Wagyu market. With the breed's propensity to marble as well as grow, results from the Shorthorn/Wagyu F1 have seen very good carcass weights, with equal marbling to the Angus F1 cattle, resulting in extremely good returns for the feeder of said cattle. We think this is a good avenue to value add your surplus heifers, so if anyone is interested in pursuing this please contact us to discuss some options that should lead to a successful outcome. We think that undoubtedly the time will come when we will see a price correction on the F1 cattle and so

believe that it will be essential to have the right genetics and a sale price locked in before investing in this area.

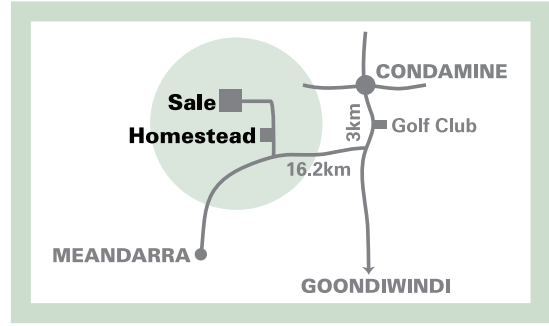
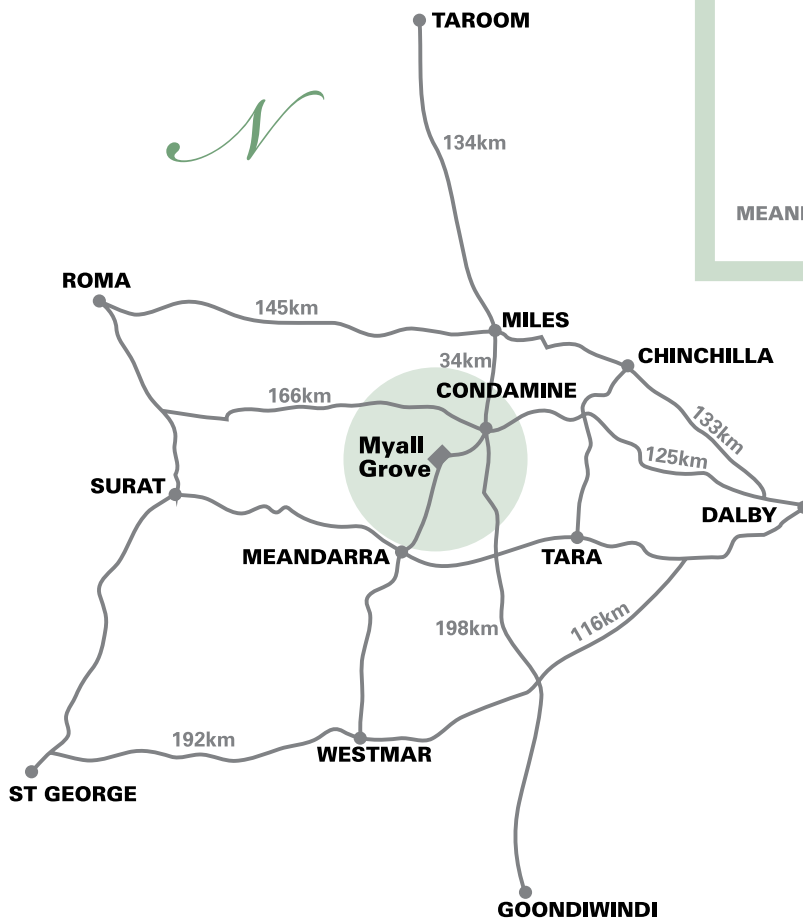
The bulls will be presented off Oats (started on Oats in late June) and will be fully vaccinated for Vibrio, 7-in-1, Pestigard, 3 Day Sickness and blooded for Redwater. These vaccinations will require a booster shot in the Spring of 2018 if you choose to continue with keeping them up to date. Dr Jemma Postle will do a thorough reproductive soundness check on the bulls combined with a crush-side semen check just prior to the sale. The Grove has completed our Biosecurity Plan in conjunction with our very helpful Veterinarian who spent many hours working through it with us. We have also had one clear check test in Nov 2016 enabling us to be a J-Bas 7, which allows entry to all states from this year's draft.

Once again we have engaged the services of GDL and Landmark to undertake the sale and assist us with the marketing of this year's draft. We strongly recommend that you contact your nearest agent from the list provided for any assistance you need leading up to or attending the sale. For anyone wishing to leave bulls at The Grove for a period of time, please contact us prior and we can work it out. The one stipulation we do have for any bulls staying on is that they are insured for that period.

A very sincere thank you to all that have supported us in 2017 and we wish you a safe trip home.

The "Myall Grove" Morgans

Directions to 'Myall Grove'



Planes can land at Lakeland Downs Airstrip

Latitude 26° 59' 42.86 South
 Longitude 150° 00' 41.46 East
 (Airstrip approx. 800 metres long)

Accommodation

- Bullocky's Rest Motel**
0418 961 929
- Condamine River Caravan Park**
(07) 4627 7174
- Condamine Hotel**
(07) 4627 7219
- Golden West Motor Inn, Miles**
(07) 4627 1688
- Miles Outback Motel**
(07) 4627 2100
- Starline Motel, Miles**
(07) 4627 1322

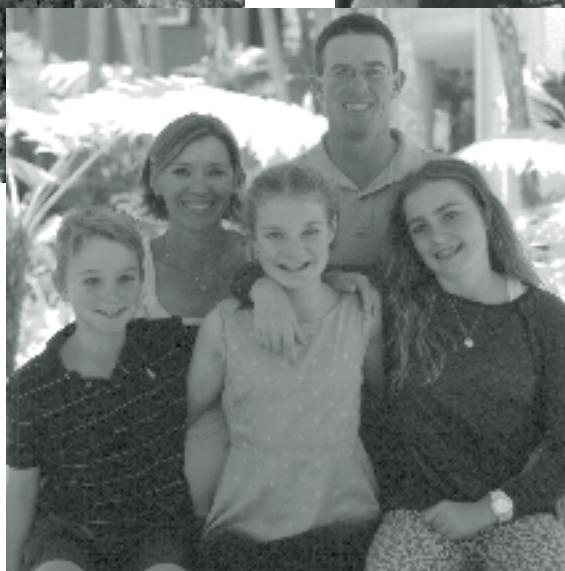
Morning Tea and Lunch provided



The Morgan Family – Above: Ash, Shannie, Spencer and Sophie. Right: Megan and Godfrey (back row), Goff, Sammie and Maddie.



Above: Sammie, Mary, Shannie.



EXPLAINING YOUR INVESTMENT'S BACKGROUND, TO MAXIMISE HIS FUTURE

THE BULLS ON OFFER AT OUR 34th Annual On-Property sale are selected from a herd of 1300 fully performance recorded cows. These cows are all run under the same conditions and are mated annually in single sire mobs. They are preg tested at weaning and any empty cow or cow failing to bring a live calf to the yard at weaning are culled; no questions, no exceptions. The cows are individually assessed for temperament and structure (including udder) at branding when we mother up every calf. Any cow noted as unacceptable at this point leaves the herd at weaning time.

Heifer Management

Our heifers are all artificially inseminated in a two-round programme with no cover bull used. The sires selected to be used over the heifers are from a selection of our own future young sires, and sires from within the PHA group. These PHA sires are selected to assist with linkage within the group and also to help our group identify the next generation of future sires to drive the genetic gain within. The heifers are calved down with all calves weighed at birth. Again, heifers failing to deliver a positive pregnancy status or a live calf to weaning are removed from the herd for "greener pastures."

Weaning

Calves are weaned at a period largely determined by seasonal conditions. We have weaned down to 2 months however that is an exception rather than a rule. Generally we try and wean at 7-8 months of age, however can see real benefits in reducing this to 5-6 months. Calves are all weighed at weaning and roundyard docility scored (an EBV for docility is not far away). They remain in the yard for 7-10 days where they are all fed silage and thus are bunk trained for life. At this time they are drenched and vaccinated and we have found a programme of adding Vitamin ADE and B12 injections is very beneficial to their health in this period which places great stress on their immune systems.

All the cows are weighed at weaning time to allow a Mature Cow Weight EBV to be calculated. This EBV does not take into account the cow's condition score which we believe is a very important component that needs building into this trait.

From here the bulls all leave the yard and remain in one contemporary group for as long as the subsequent feed allows. At a minimum we try to ensure they stay in this one group until a 400 Day Weight has been collected and Scrotal Circumference has been measured. The heifer portion are all trucked to another property where they remain in the one group until a 400 Day Weight is taken and selection is undertaken for which heifers will be joined. Those not to be joined are then fattened for the MSA market or fed through for the 100 day Jap Ox market. We are finding we can hit market specifications for both of these markets with or without the use of HGP's.

Ultrasound Scanning to Generate Carcase EBVs

This is undertaken at a time when the animals are carrying enough condition to enable the variation between animals to be at its greatest. Having that variation amongst the large contemporary groups ensures the best outcome of quality information being fed into BREEDPLAN to create the Carcase EBVs we require to drive genetic gain within our herd. The variation amongst the heifers is generally much greater than their male siblings as they tend to lay cover at an earlier age. This practice sees clear sire lines rise to the top in their various traits and again is highlighted by the heifers' data.

Your Future Sire's Background

So at this point your bull has come from an initial group of some 600 male calves born for that year. They have stayed in their contemporary groups and been measured for all the above traits and have been genetically described as accurately as possible through the integrity of quality data input into BREEDPLAN. These same traits are all measured by other members of PHA which gives our group real confidence in the figures allocated to each animal.

From this point the mobs are generally split into mobs of approximately 125 each being sorted into Sale and paddock bulls. From here the emphasis is on Structure and Temperament. As the bulls mature and gain weight their structural strengths and weaknesses are highlighted.

The final judgement on structure is made by Mr Bob Gahan prior to the sale. He grades every bull on structure and if he is uncomfortable with their overall structure the bull is withdrawn from sale.

Their temperament is observed at every yarding and the older and slower I become the harder we are on this trait. What this means is that from the docility roundyard test until sale day, the bulls are removed from the mob if we do not feel safe in the roundyard with them. This does not mean we are able to scratch and pat them, it means we feel safe around them in normal handling practice. We do not attempt to make our bulls “people” quiet by spending long periods of time with them so hopefully what you see is how they will breed. They receive the same handling as our heifer calves, allowing their true temperament to surface.

Once They Arrive at Your Place

Our bulls are run in large groups and probably the first time they have ever been split from their mates is on a truck trip to your property. So we encourage you to have some companion cattle in the yards waiting for him to settle in with, as his travel may have made him anxious and agitated.

Our bulls have been mustered and handled with horses, bikes and utes and have been worked with dogs (all be it not very good ones), so they should be accustomed to most methods of handling.

Bull/Cow Ratio

Under average seasonal conditions a rising two year old should manage to cover 40 cycling cows. Older bulls, if fit and mobile, can generally handle a few more.

HELMSMAN SALE INFORMATION EXPLAINED

We will be giving step-by-step instructions before the sale – and the agents will be there to assist with any questions. An overview of the process is:

Registration: Buyers will register on arrival – as per normal. At registration, each buyer will be issued with a simple electronic hand piece, which will be used for bidding. Step by step instructions will be provided and the agents will be available to assist at all times.

The Catalogue: All lots will be numbered and catalogued – as per normal.

The Sale Process: Buyers will place bids via an electronic hand piece and all bids will be displayed on a big screen. (Bids will be registered according to a bid card number). When the sale is opened, ALL lots go on the market at the same time and the silent auction will begin.

The sale will then run for a period of 30 minutes and buyers will be able to place bids as they see fit.

The sale will then enter its final stage.

- Just like an Auctions Plus sale (which you may have seen) the sale will continue for as long as bids are received.
- Every time a bid is received, the sale will be extended for a further two minutes to allow an opportunity for counterbids.
- Once a two minute period passes without a bid, the sale will be officially closed.

Once the bidding has stopped, the sale will be declared to be finished and all the bids displayed on the big screen will automatically become the winning bids.

Observation During Mating

It is highly recommended that you monitor your bulls during mating on a weekly basis. Ensure they are on four feet and if a cow is cycling then observe the bull mounting and doing the job. This does take a little time yet it is time very well spent. Any cows observed being served should be noted so that in three weeks time if she is being served again you know there could be a problem.

In a single sire mob it is much easier to observe issues, yet on the flip side, much more vital to note as he does not have the advantage of having another bull cover his inability to perform.

When joining in multiple sire groups be aware that the older bulls in the mob are going to be more dominant as they are generally higher up the pecking order. In an ideal world try and join them with their mates from the same sale as there will be less likelihood of injury, or second best is to join them with bulls all of the same age.

At Season's End

We endeavour to pull all the bulls out in as short a period as possible so that they can be drenched and put in the sire paddock at the same time. This allows them to find their personal space early on without having it disrupted every time a new sire is put into the paddock. Again, adequate room and feed supply will let them settle much more quickly which reduces injuries.

Disclaimer The Vendors, Family, Sale Staff and representatives accept no liability for accidents that may occur, although these are rare at cattle sales. Any person attending does so at their own risk. While all care has been taken in the preparation of this catalogue, The Grove accepts no responsibility for any errors or omissions contained in this publication.

PERFORMANCE RECORDING AT THE GROVE

THE GROVE is the largest performance recorded herd of Shorthorn genetics in the world. We firmly believe our ongoing commitment to performance recording and R&D, and maintaining large contemporary groups is allowing us to make the genetic gain that we have achieved. The integrity of the data being collected is paramount if we are to make rates of gain which will see us be competitive with other protein sources.

The Selection Index

There is one selection index calculated for animals recorded with Performance Herds Australia. This is the MSA-B2 Index.

MSA-B2 Index (\$): Estimates the genetic differences between animals in net profitability per cow joined for an example commercial British bred herd (ie. Shorthorn, Angus or Hereford cows) in either a cool temperate/ Mediterranean or warm

temperate/grassland environment targeting the production of steers for either the heavy domestic MSA food service market or the Japanese B2 export market. Steers are pasture grown to feedlot entry at 460kg live weight at 16 months then grain finished for 120 days to be slaughtered at 20 months weighing 675kg (360 kg HSCW). Select heifers are retained for breeding and the balance grass fattened to MSA slaughter at 540kg (290kg HSCW).

Use these tables as a guide to compare individual animals with the current genetic level of the Performance Herds Australia group.

JUNE 2017 PERFORMANCE HERDS AUSTRALIA BREEDPLAN AVERAGE SELECTION INDEX VALUES FOR 2015-BORN CALVES

SELECTION INDEX VALUES

Market Target: Index Value:

PHA MSA-B2 +\$52

The Performance Herds Australia BREEDPLAN Estimated Breeding Values contained in this sale catalogue were compiled by the Agricultural Business Research Institute (ABRI) from data supplied by the breeders. Neither Performance Herds Australia nor the ABRI oversee or audit the collection of the data.

JUNE 2017 PERFORMANCE HERDS AUSTRALIA BREEDPLAN AVERAGE EBVS FOR 2015-BORN CALVES

	CED	CEM	GL	BW	200	400	600	MCW	MILK	SS	CWT	EMA	RIB	RUMP	RBY	IMF
EBV	-0.4	+0.2	-1.2	+3.1	+28	+39	+51	+47	+6	+1.6	+37	+3.8	-0.7	-1.0	+1.1	+0.5

JUNE 2017 PERFORMANCE HERDS AUSTRALIA BREEDPLAN PERCENTILE BANDS FOR 2015-BORN CALVES

Use this table to assess exactly how an individual animal's EBVs rank within the PHA group for each performance trait.

PERCENTILE BAND	CED	CEM	GL	BW	200	400	600	MCW	MILK	SS	CWT	EMA	RIB	RUMP	RBY	IMF	MSA-B2
TOP VALUE	+6.0	+2.4	-4.8	-4.1	+52	+66	+91	+102	+15	+4.1	+63	+8.1	+2.9	+3.9	+3.9	+1.8	+93
TOP 1%	+4.0	+1.7	-3.5	-0.6	+45	+61	+82	+89	+13	+3.0	+55	+6.5	+1.3	+1.7	+2.9	+1.4	+80
TOP 5%	+2.9	+1.4	-2.8	+0.7	+40	+55	+74	+78	+10	+2.4	+51	+5.8	+0.6	+0.8	+2.4	+1.1	+73
TOP 10%	+2.2	+1.1	-2.4	+1.3	+38	+52	+69	+71	+9	+2.2	+47	+5.4	+0.3	+0.3	+2.1	+1.0	+69
TOP 15%	+1.8	+0.9	-2.2	+1.7	+36	+50	+66	+67	+8	+2.1	+46	+5.1	+0.0	+0.0	+1.9	+0.9	+65
TOP 20%	+1.5	+0.8	-2.0	+1.9	+35	+48	+63	+63	+7	+2.0	+44	+4.9	-0.1	-0.2	+1.8	+0.8	+63
TOP 25%	+1.2	+0.7	-1.8	+2.2	+33	+46	+61	+61	+7	+1.9	+43	+4.7	-0.2	-0.3	+1.6	+0.7	+60
TOP 30%	+0.8	+0.6	-1.7	+2.4	+32	+44	+59	+58	+7	+1.8	+41	+4.5	-0.3	-0.5	+1.5	+0.7	+58
TOP 35%	+0.6	+0.5	-1.6	+2.6	+31	+43	+57	+55	+6	+1.7	+40	+4.3	-0.5	-0.6	+1.4	+0.6	+57
TOP 40%	+0.3	+0.4	-1.4	+2.8	+30	+42	+55	+53	+6	+1.7	+39	+4.1	-0.5	-0.8	+1.3	+0.6	+55
TOP 45%	+0.1	+0.3	-1.3	+3.0	+29	+40	+53	+50	+6	+1.6	+38	+4.0	-0.6	-0.9	+1.2	+0.5	+54
TOP 50%	-0.2	+0.2	-1.2	+3.2	+28	+39	+51	+47	+5	+1.6	+37	+3.9	-0.7	-1.0	+1.1	+0.5	+52

Throughout this catalogue grey shading indicates an EBV in the top 25% of the Performance Herds Australia group.

6 THE GROVE PLAYFORD L0533 (SR) (H)

Tattoo: L0533 DOB: 21/07/2015 Colour: Red Reg No: BDBL0533

YAMBURGAN MITTIEBAH 3RD (SR) (P)
SIRE: TURANVILLE MITTIEBAH H132 (SR) (P)
TURANVILLE E130 (SR) (P)

DUNBEACON BIG BILL (SR) (P)
DAM: THE GROVE DALE G0368 (SR) (P)
THE GROVE JR DALE Z049 (SR) (P)

BUYER: S:

JUNE 2017 PERFORMANCE HERDS AUSTRALIA BREEDPLAN EBVs

	CED	CEM	GL	BW	200	400	600	MCW	MILK	SS	CWT	EMA	RIB	RUMP	RBY	IMF
EBV	-1.2	-0.7	+5.0	+4.2	+5.8	+7.2	+7.0	+7	+1.5	+5.0	+4.5	+1.0	+1.2	-0.2	+1.6	
ACC	27%	36%	58%	68%	63%	68%	59%	42%	70%	58%	47%	55%	55%	53%	46%	

SELECTION INDEX VALUES

Market Target: Index Value:

MSA-B2 +\$80

MEASUREMENTS

Scrotal Size |

Weight |

EMA |

Rib Fat |

Rump Fat |

IMF |

All selection indexes are reported as an EBV, in units of relative earning capacity (\$) for the given production/market scenario. They reflect both the short term profit generated by a sire through the sale of his progeny, and the longer term profit generated by his daughters in a self replacing cow herd. All selection index values have been derived using BreedObject technology.

Accuracy (ACC)

An accuracy value is presented as a percentage with every EBV. It provides a measure of the stability of the EBV and gives an indication of the amount of information that has been used in the calculation of that EBV. The higher the accuracy the lower the likelihood of change in the animal's EBV as more information is analysed for that animal, its progeny or its relatives.

Accuracy Range – Less than 50%:

EBVs are preliminary. EBVs in this range will have been calculated based on very little information. These EBVs could change substantially as more direct performance information becomes available on the animal.

Accuracy Range 50 - 74%:

EBVs are of medium accuracy. EBVs in this range will usually have been calculated based on the animal's own performance and some limited pedigree information.

Accuracy Range 75 - 90%:

EBVs are of medium-high accuracy. EBVs in this range will usually have been calculated based on the animal's own performance coupled with the performance for a small number of the animal's progeny.

Accuracy Range 90% and above: EBVs are a high accuracy estimate of the animal's true breeding value. It is unlikely that EBVs will change considerably with addition of more progeny data.

The EBVs Explained

CED and CEM: Calving Ease EBVs (%) are based on calving difficulty scores, birth weights and gestation length information. More positive EBVs are favourable and indicate easier calving. The Calving Ease Direct EBV (CED) for direct calving ease indicates the influence of the sire on calving ease in purebred females calving at two years of age. The Calving Ease Maternal/Daughters EBV (CEM) for daughters' calving ease indicates how easily that sire's daughters will calve at two years of age.

GL: Gestation Length EBV (days) is an estimate of the time from conception to the birth of the calf and is based on AI records. Lower (negative) GL EBVs indicate shorter gestation length and therefore easier calving and increased growth after birth.

BW: Birth Weight EBV (kg) is based on the measured birth weight of progeny, adjusted for dam age. The lower the value, the lighter the calf at birth and the lower the likelihood of a difficult birth. This is particularly important when selecting sires for use over heifers.

200: 200-Day Growth EBV (kg) is calculated from the weight of animals taken between 80 and 300 days of age. Values are adjusted to 200 days and for dam age. This EBV is the best single estimate of an animal's genetic merit for growth to early ages.

400: 400-Day Weight EBV (kg) is calculated from the weight of progeny taken between 301 and 500 days of age, adjusted to 400 days and for dam age. This EBV is the best single estimate of an animal's genetic merit for yearling weight.

600: 600-Day Weight EBV (kg) is calculated from the weight of progeny taken between 501 and 900 days of age, adjusted to 600 days and for dam age. This EBV is the best single estimate of an animal's genetic merit for growth beyond yearling age.

MCW: Mature Cow Weight EBV (kg) is based on the cow weight when the calf is weighed for weaning, adjusted to 5 years of age. This EBV is an estimate of the genetic difference in cow weight at 5 years of age and is an indicator of growth at later ages and potential feed maintenance requirements of the females in the breeding herd. Steer breeders wishing to grow animals out to a larger weight may also use the Mature Cow Weight EBV.

MILK: Milk EBV (kg) is an estimate of an animal's milking ability. For sires, this EBV indicates the effect of the daughter's milking ability, inherited from the sire, on the 200-day weights of her calves. For dams, it indicates her milking ability.

SS: Scrotal Size EBV (cm) is calculated from the circumference of the scrotum taken between 300 and 700 days of age and adjusted to 400 days of age. This EBV is an estimate of an animal's genetic merit for scrotal size. There is also a small negative correlation with age of puberty in female progeny and therefore selection for increased scrotal size will result in reduced age at calving of female progeny.

CWT: Carcase Weight EBV (kg) is based on abattoir carcase records and is an indicator of the genetic differences in carcase weight at the standard age of 650 days.

EMA: Eye Muscle Area EBV (sq cm) is calculated from measurements from live animal ultrasound scans and from abattoir carcase data, adjusted to a standard 300kg carcase. This EBV estimates genetic differences in eye muscle area at the 12/13th rib site of a 300kg dressed carcase. More positive EBVs indicate better muscling on animals. Animals with relatively higher EMA EBVs are expected to produce better muscled and higher percentage yielding progeny at the same carcase weight than will animals with lower EMA EBVs.

RIB and RUMP: Rib Fat and Rump Fat EBVs (mm) are calculated from measurements of subcutaneous fat depth at the 12/13-rib site and the P8 rump site (from live animal ultrasound scans and from abattoir carcasses) and are adjusted to a standard 300kg carcase. These EBVs are indicators of the genetic differences in fat distribution on a standard 300kg carcase. Animals with relatively lower fat EBVs are expected to produce leaner progeny at any particular carcase weight than will animals with higher EBVs.

RBV: Retail Beef Yield EBV (%) indicates genetic differences between animals for retail yield percentage in a standard 300kg carcase. Animals with larger EBVs are expected to produce progeny with higher yielding carcasses.

IMF: Intra-muscular Fat Percent EBV (%) is an estimate of the genetic difference in the percentage of intra-muscular fat at the 12/13th rib site in a 300kg carcase. Depending on market targets, larger more positive values are generally more favourable.

The Grove.

Australia's Premier Performance Shorthorn Herd

Lots 1–26 **SPECIALY SELECTED PERFORMANCE RECORDED SIRES FOR AUCTION**

Will be open auctioned prior to Helmsman Auction commencing.

1 THE GROVE L0756 (SR) (P)

Tattoo: L0756 DOB: 26/08/2015 Colour: Red Reg No: BDBL0756

WEEBOLLABOLLA THEODORE T85 (SR) (P)

SIRE: THE GROVE J0598 (SR) (P)

THE GROVE F526 (SR) (P)

DUNBEACON BIG BILL (SR) (P)

DAM: THE GROVE RAMONA E1203 (SR) (P)

THE GROVE RAMONA W723 (SR) (P)

BUYER:

\$:

SELECTION INDEX VALUES

Market Target: Index Value:

MSA-B2 +\$79

MEASUREMENTS

Scrotal Size |

Weight |

EMA |

Rib Fat |

Rump Fat |

IMF |

JUNE 2017 PERFORMANCE HERDS AUSTRALIA BREEDPLAN EBVs

	CED	CEM	GL	BW	200	400	600	MCW	MILK	SS	CWT	EMA	RIB	RUMP	RBY	IMF
EBV	+1.2	+0.6	-2.0	+3.5	+31	+54	+77	+77	+5	+2.0	+52	+5.2	-1.6	-2.2	+2.1	+0.4
ACC	33%	27%	49%	63%	71%	66%	70%	60%	44%	72%	60%	50%	58%	58%	56%	49%

2 THE GROVE L0305 (SR) (P)

Tattoo: L0305 DOB: 17/08/2015 Colour: Red Reg No: BDBL0305

THE GROVE F323 (SR) (P)

SIRE: THE GROVE BLOTCH H1182 (SR) (P)

THE GROVE KOOKA'S DALE D096 (SR) (P)

BROUGHTON PARK SENATOR Y041 (SR) (P)

DAM: THE GROVE E1182 (SR) (P)

THE GROVE C052 (SR) (P)

BUYER:

\$:

SELECTION INDEX VALUES

Market Target: Index Value:

MSA-B2 +\$72

MEASUREMENTS

Scrotal Size |

Weight |

EMA |

Rib Fat |

Rump Fat |

IMF |

JUNE 2017 PERFORMANCE HERDS AUSTRALIA BREEDPLAN EBVs

	CED	CEM	GL	BW	200	400	600	MCW	MILK	SS	CWT	EMA	RIB	RUMP	RBY	IMF
EBV	-2.9		-1.1	+4.6	+38	+55	+73	+84	+5	+1.7	+48	+1.6	-0.2	+0.3	-0.5	+1.6
ACC	31%		52%	64%	71%	65%	70%	60%	41%	71%	59%	48%	50%	50%	50%	48%

3 THE GROVE L0443 (SR) (P)

Tattoo: L0443 DOB: 16/08/2015 Colour: Red Reg No: BDBL0443

THE GROVE F915 (SR) (P)

SIRE: THE GROVE J0572 (SR) (P)

THE GROVE E1110 (SR) (P)

SPRYS LEGEND Z096 (SR) (P)

DAM: THE GROVE D448 (SR) (P)

THE GROVE Y165 (SR) (P)

BUYER:

\$:

SELECTION INDEX VALUES

Market Target: Index Value:

MSA-B2 +\$81

MEASUREMENTS

Scrotal Size |

Weight |

EMA |

Rib Fat |

Rump Fat |

IMF |

JUNE 2017 PERFORMANCE HERDS AUSTRALIA BREEDPLAN EBVs

	CED	CEM	GL	BW	200	400	600	MCW	MILK	SS	CWT	EMA	RIB	RUMP	RBY	IMF
EBV			-1.0	+4.7	+40	+55	+80	+76	+7	+1.9	+56	+6.8	-0.3	-0.5	+1.7	+0.6
ACC			32%	57%	70%	65%	69%	59%	41%	71%	59%	49%	58%	58%	55%	50%

4 THE GROVE L1022 (SR) (P)

Tattoo: L1022 DOB: 10/08/2015 Colour: Red Reg No: BDBL1022

WEEBOLLABOLLA THEODORE T85 (SR) (P)
SIRE: THE GROVE J0598 (SR) (P)
 THE GROVE F526 (SR) (P)
 SPRYS TRUE BLUE Y033 (SR) (P)
DAM: THE GROVE E716 (SR) (P)
 THE GROVE A145 (SR) (P)

SELECTION INDEX VALUES	
Market Target:	Index Value:
MSA-B2	+\$72

MEASUREMENTS	
Scrotal Size	
Weight	
EMA	
Rib Fat	
Rump Fat	
IMF	

BUYER: \$:

JUNE 2017 PERFORMANCE HERDS AUSTRALIA BREEDPLAN EBVs

	CED	CEM	GL	BW	200	400	600	MCW	MILK	SS	CWT	EMA	RIB	RUMP	RBY	IMF
EBV	+1.7	+1.1	-2.3	+2.7	+30	+48	+72	+63	+8	+0.6	+49	+5.0	-1.2	-1.8	+1.8	+0.3
ACC	35%	28%	50%	63%	71%	66%	70%	60%	44%	73%	60%	50%	57%	57%	54%	48%

5 THE GROVE L0755 (SR) (P)

Tattoo: L0755 DOB: 03/08/2015 Colour: Roan Reg No: BDBL0755

WEEBOLLABOLLA THEODORE T85 (SR) (P)
SIRE: THE GROVE J0598 (SR) (P)
 THE GROVE F526 (SR) (P)
 SPRYS WHAT A RIPPER Z122 (SR) (P)
DAM: THE GROVE E782 (SR) (P)
 THE GROVE W814 (SR) (P)

SELECTION INDEX VALUES	
Market Target:	Index Value:
MSA-B2	+\$76

MEASUREMENTS	
Scrotal Size	
Weight	
EMA	
Rib Fat	
Rump Fat	
IMF	

BUYER: \$:

JUNE 2017 PERFORMANCE HERDS AUSTRALIA BREEDPLAN EBVs

	CED	CEM	GL	BW	200	400	600	MCW	MILK	SS	CWT	EMA	RIB	RUMP	RBY	IMF
EBV	+1.7	+0.6	-1.5	+3.1	+28	+51	+69	+72	+6	+1.0	+51	+4.0	+0.0	+0.4	+0.4	+1.0
ACC	32%	25%	48%	62%	71%	66%	70%	60%	43%	73%	59%	50%	58%	58%	56%	48%

6 THE GROVE PLAYFORD L0533 (SR) (H)

Tattoo: L0533 DOB: 21/07/2015 Colour: Red Reg No: BDBL0533

YAMBURGAN MITTIEBAH 3RD (SR) (P)
SIRE: TURANVILLE MITTIEBAH H132 (SR) (P)
 TURANVILLE E130 (SR) (P)
 DUNBEACON BIG BILL (SR) (P)
DAM: THE GROVE DALE G0368 (SR) (P)
 THE GROVE JR DALE Z049 (SR) (P)

SELECTION INDEX VALUES	
Market Target:	Index Value:
MSA-B2	+\$80

MEASUREMENTS	
Scrotal Size	
Weight	
EMA	
Rib Fat	
Rump Fat	
IMF	

BUYER: \$:

JUNE 2017 PERFORMANCE HERDS AUSTRALIA BREEDPLAN EBVs

	CED	CEM	GL	BW	200	400	600	MCW	MILK	SS	CWT	EMA	RIB	RUMP	RBY	IMF
EBV	-1.2		-0.7	+5.0	+42	+58	+72	+70	+7	+1.5	+50	+4.5	+1.0	+1.2	-0.2	+1.6
ACC	27%		36%	58%	68%	63%	68%	59%	42%	70%	58%	47%	55%	55%	53%	46%

7 THE GROVE L0492 (SR) (P)

Tattoo: L0492 DOB: 20/08/2015 Colour: Red Reg No: BDBL0492

BUNDALEER UNITED CHIEF U21 (SR) (P)
SIRE: WEEBOLLABOLLA GOODAR G105 (SR) (P)
 WEEBOLLABOLLA E25 (SR) (P)
 FUTURITY ROCKET (SR) (P)
DAM: THE GROVE STARS E063 (SR) (P)
 THE GROVE STARS B187 (SR) (P)

SELECTION INDEX VALUES	
Market Target:	Index Value:
MSA-B2	+\$71

MEASUREMENTS	
Scrotal Size	
Weight	
EMA	
Rib Fat	
Rump Fat	
IMF	

BUYER: \$:

JUNE 2017 PERFORMANCE HERDS AUSTRALIA BREEDPLAN EBVs

	CED	CEM	GL	BW	200	400	600	MCW	MILK	SS	CWT	EMA	RIB	RUMP	RBY	IMF
EBV	+0.9		-3.2	+4.3	+41	+51	+68	+33	+11	+1.2	+47	+3.8	-1.4	-1.4	+2.1	+0.4
ACC	33%		51%	64%	71%	66%	71%	60%	43%	72%	60%	49%	59%	59%	56%	50%

8 THE GROVE L0764 (SR) (P)

Tattoo: L0764 DOB: 17/09/2015 Colour: Roan Reg No: BDBL0764

WEEBOLLABOLLA THEODORE T85 (SR) (P)
SIRE: THE GROVE J0598 (SR) (P)
 THE GROVE F526 (SR) (P)
 THE GROVE INFORMANT Y463 (SR) (P)
DAM: THE GROVE OLGA E994 (SR) (P)
 THE GROVE OLGA Z423 (SR) (P)

SELECTION INDEX VALUES	
Market Target:	Index Value:
MSA-B2	+\$77

MEASUREMENTS

Scrotal Size |
 Weight |
 EMA |
 Rib Fat |
 Rump Fat |
 IMF |

BUYER:

\$:

JUNE 2017 PERFORMANCE HERDS AUSTRALIA BREEDPLAN EBVs

	CED	CEM	GL	BW	200	400	600	MCW	MILK	SS	CWT	EMA	RIB	RUMP	RBY	IMF
EBV	+0.8	-0.4	-1.4	+2.2	+17	+40	+67	+74	+2	+2.3	+44	+5.9	+0.0	-0.2	+1.2	+0.9
ACC	37%	31%	52%	64%	71%	66%	70%	60%	45%	73%	60%	51%	59%	59%	57%	50%

9 THE GROVE L0770 (SR) (P)

Tattoo: L0770 DOB: 26/09/2015 Colour: Red Little White Reg No: BDBL0770

THE GROVE BODACIOUS D425 (SR) (P)
SIRE: THE GROVE G0377 (SR) (P)
 THE GROVE A420 (SR) (P)
 THE GROVE TRANVAAL E1271 (SR) (P)
DAM: THE GROVE H0585 (SR) (P)
 THE GROVE E531 (SR) (P)

SELECTION INDEX VALUES	
Market Target:	Index Value:
MSA-B2	+\$70

MEASUREMENTS

Scrotal Size |
 Weight |
 EMA |
 Rib Fat |
 Rump Fat |
 IMF |

BUYER:

\$:

JUNE 2017 PERFORMANCE HERDS AUSTRALIA BREEDPLAN EBVs

	CED	CEM	GL	BW	200	400	600	MCW	MILK	SS	CWT	EMA	RIB	RUMP	RBY	IMF
EBV	-1.3	-0.7	-2.0	+5.4	+47	+65	+91	+102	+9	+1.3	+60	+4.9	-1.4	-2.2	+2.2	-0.2
ACC	35%	27%	48%	64%	71%	64%	63%	55%	43%	72%	57%	50%	57%	57%	55%	50%

10 THE GROVE L0460 (SR) (P)

Tattoo: L0460 DOB: 05/09/2015 Colour: Red Reg No: BDBL0460

SPRYS PATENTS ACE G38 (SR)
SIRE: THE GROVE J0606 (SR) (P)
 THE GROVE F532 (SR) (P)
 THE GROVE INFORMANT Y463 (SR) (P)
DAM: THE GROVE Y463 DALE F1092 (SR) (P)
 THE GROVE R.E. DALE W744 (SR) (P)

SELECTION INDEX VALUES	
Market Target:	Index Value:
MSA-B2	+\$73

MEASUREMENTS

Scrotal Size |
 Weight |
 EMA |
 Rib Fat |
 Rump Fat |
 IMF |

BUYER:

\$:

JUNE 2017 PERFORMANCE HERDS AUSTRALIA BREEDPLAN EBVs

	CED	CEM	GL	BW	200	400	600	MCW	MILK	SS	CWT	EMA	RIB	RUMP	RBY	IMF
EBV	+1.2	+0.1	-1.7	+2.7	+29	+43	+62	+69	+5	+2.2	+50	+5.5	-1.3	-1.6	+2.2	+0.6
ACC	31%	27%	40%	60%	70%	65%	69%	60%	42%	72%	59%	49%	56%	56%	54%	47%

11 THE GROVE L0968 (SR) (P)

Tattoo: L0968 DOB: 02/08/2015 Colour: Roan Reg No: BDBL0968

THE GROVE TANDY E274 (SR) (P)
SIRE: THE GROVE H0055 (SR) (P)
 THE GROVE X517 (SR) (P)
 EVILO ZIGGY Z36 (SR) (P)
DAM: THE GROVE E1145 (SR) (P)
 THE GROVE U506 (SR) (P)

SELECTION INDEX VALUES	
Market Target:	Index Value:
MSA-B2	+\$63

MEASUREMENTS

Scrotal Size |
 Weight |
 EMA |
 Rib Fat |
 Rump Fat |
 IMF |

BUYER:

\$:

JUNE 2017 PERFORMANCE HERDS AUSTRALIA BREEDPLAN EBVs

	CED	CEM	GL	BW	200	400	600	MCW	MILK	SS	CWT	EMA	RIB	RUMP	RBY	IMF
EBV	+2.0		-2.7	+2.3	+28	+36	+46	+48	+6	+2.0	+37	+4.3	-2.3	-3.0	+2.9	+0.3
ACC	27%		46%	62%	71%	65%	70%	60%	43%	71%	59%	49%	57%	57%	54%	48%

12 THE GROVE L0384 (SR) (P)

Tattoo: L0384 DOB: 14/09/2015 Colour: Roan Reg No: BDBL0384

SPRYS PATENTS ACE G38 (SR)
SIRE: THE GROVE J0613 (SR) (P)
 THE GROVE F699 (SR) (P)
 DUNBEACON BIG BILL (SR) (P)
DAM: THE GROVE G0369 (SR) (P)
 THE GROVE Y471 (SR) (P)

SELECTION INDEX VALUES	
Market Target:	Index Value:
MSA-B2	+\$60

MEASUREMENTS	
Scrotal Size	
Weight	
EMA	
Rib Fat	
Rump Fat	
IMF	

BUYER: \$:

JUNE 2017 PERFORMANCE HERDS AUSTRALIA BREEDPLAN EBVs																
	CED	CEM	GL	BW	200	400	600	MCW	MILK	SS	CWT	EMA	RIB	RUMP	RBY	IMF
EBV			-1.6	+4.3	+33	+45	+56	+55	+4	+1.1	+40	+4.5	-0.5	-0.3	+1.5	+0.5
ACC			34%	58%	70%	64%	69%	59%	38%	71%	58%	47%	57%	57%	54%	47%

13 THE GROVE L0796 (SR) (P)

Tattoo: L0796 DOB: 28/08/2015 Colour: Red Reg No: BDBL0796

THE GROVE INFORMANT Y463 (SR) (P)
SIRE: THE GROVE INFORMER F1131 (SR) (P)
 THE GROVE R.E. DALE W744 (SR) (P)
 WAUKARU BRISBANE 4111 (SR) (P)
DAM: THE GROVE B105 (SR) (P)
 N98X01910 (SR)

SELECTION INDEX VALUES	
Market Target:	Index Value:
MSA-B2	+\$50

MEASUREMENTS	
Scrotal Size	
Weight	
EMA	
Rib Fat	
Rump Fat	
IMF	

BUYER: \$:

JUNE 2017 PERFORMANCE HERDS AUSTRALIA BREEDPLAN EBVs																
	CED	CEM	GL	BW	200	400	600	MCW	MILK	SS	CWT	EMA	RIB	RUMP	RBY	IMF
EBV	-2.3	-1.6	+0.3	+3.7	+24	+33	+53	+65	+5	+2.2	+39	+4.5	-0.8	-0.5	+1.8	+0.3
ACC	32%	30%	48%	60%	71%	65%	71%	61%	50%	71%	60%	50%	59%	59%	57%	51%

14 THE GROVE L0396 (SR) (P)

Tattoo: L0396 DOB: 02/08/2015 Colour: Red Reg No: BDBL0396

SPRYS PATENTS ACE G38 (SR)
SIRE: THE GROVE J0613 (SR) (P)
 THE GROVE F699 (SR) (P)
 DUNBEACON BIG BILL (SR) (P)
DAM: THE GROVE ROSE G0358 (SR) (P)
 THE GROVE ROSE X469 (SR) (P)

SELECTION INDEX VALUES	
Market Target:	Index Value:
MSA-B2	+\$56

MEASUREMENTS	
Scrotal Size	
Weight	
EMA	
Rib Fat	
Rump Fat	
IMF	

BUYER: \$:

JUNE 2017 PERFORMANCE HERDS AUSTRALIA BREEDPLAN EBVs																
	CED	CEM	GL	BW	200	400	600	MCW	MILK	SS	CWT	EMA	RIB	RUMP	RBY	IMF
EBV			-1.7	+4.8	+37	+45	+53	+46	+5	+1.5	+37	+2.8	-0.8	-0.7	+1.0	+0.6
ACC			34%	58%	69%	64%	69%	58%	39%	71%	58%	47%	56%	56%	53%	47%

15 THE GROVE BLOTCH L0250 (SR) (P)

Tattoo: L0250 DOB: 07/08/2015 Colour: Red Reg No: BDBL0250

THE GROVE F323 (SR) (P)
SIRE: THE GROVE BLOTCH H1182 (SR) (P)
 THE GROVE KOOKA'S DALE D096 (SR) (P)
 BELMORE JUNIOR Z207 (SR) (P)
DAM: THE GROVE PATSY E515 (SR) (P)
 THE GROVE PATSY Y359 (SR) (P)

SELECTION INDEX VALUES	
Market Target:	Index Value:
MSA-B2	+\$52

MEASUREMENTS	
Scrotal Size	
Weight	
EMA	
Rib Fat	
Rump Fat	
IMF	

BUYER: \$:

JUNE 2017 PERFORMANCE HERDS AUSTRALIA BREEDPLAN EBVs																
	CED	CEM	GL	BW	200	400	600	MCW	MILK	SS	CWT	EMA	RIB	RUMP	RBY	IMF
EBV	-2.9		-1.1	+3.7	+30	+43	+50	+44	+6	+1.5	+35	+2.3	+0.2	+0.7	-0.3	+1.3
ACC	27%		45%	61%	70%	65%	69%	59%	39%	71%	59%	48%	57%	57%	55%	48%

16 THE GROVE L0967 (SR) (H)

Tattoo: L0967 DOB: 03/08/2015 Colour: Red Reg No: BDBL0967

THE GROVE TANDY E274 (SR) (P)
SIRE: THE GROVE H0055 (SR) (P)
 THE GROVE X517 (SR) (P)
 EVILO ZIGGY Z36 (SR) (P)
DAM: THE GROVE LUCINDA E968 (SR) (P)
 THE GROVE LUCINDA X735 (SR) (P)

SELECTION INDEX VALUES	
Market Target:	Index Value:
MSA-B2	+\$68

MEASUREMENTS

Scrotal Size |
 Weight |
 EMA |
 Rib Fat |
 Rump Fat |
 IMF |

BUYER:

\$:

JUNE 2017 PERFORMANCE HERDS AUSTRALIA BREEDPLAN EBVs

	CED	CEM	GL	BW	200	400	600	MCW	MILK	SS	CWT	EMA	RIB	RUMP	RBY	IMF
EBV	+3.1		-2.9	+1.9	+31	+37	+46	+47	+5	+0.8	+42	+5.6	-1.3	-1.8	+2.3	+0.7
ACC	28%		46%	62%	71%	65%	70%	60%	42%	72%	60%	49%	57%	57%	55%	49%

17 THE GROVE L0260 (SR) (P)

Tattoo: L0260 DOB: 28/10/2015 Colour: Red Reg No: BDBL0260

THE GROVE F915 (SR) (P)
SIRE: THE GROVE J0563 (SR) (P)
 THE GROVE LUCINDA E968 (SR) (P)
 WAUKARU BRISBANE 4111 (SR) (P)
DAM: THE GROVE C091 (SR) (P)
 THE GROVE Z887 (SR) (P)

SELECTION INDEX VALUES	
Market Target:	Index Value:
MSA-B2	+\$55

MEASUREMENTS

Scrotal Size |
 Weight |
 EMA |
 Rib Fat |
 Rump Fat |
 IMF |

BUYER:

\$:

JUNE 2017 PERFORMANCE HERDS AUSTRALIA BREEDPLAN EBVs

	CED	CEM	GL	BW	200	400	600	MCW	MILK	SS	CWT	EMA	RIB	RUMP	RBY	IMF
EBV			-1.3	+3.3	+30	+39	+47	+42	+7	+1.9	+38	+4.7	-1.3	-1.3	+2.0	+0.5
ACC			33%	58%	70%	64%	68%	56%	42%	70%	58%	47%	56%	56%	53%	46%

18 THE GROVE L0965 (SR) (P)

Tattoo: L0965 DOB: 24/08/2015 Colour: Red Reg No: BDBL0965

THE GROVE TANDY E274 (SR) (P)
SIRE: THE GROVE H0055 (SR) (P)
 THE GROVE X517 (SR) (P)
 THE GROVE INFORMANT Y463 (SR) (P)
DAM: THE GROVE E1188 (SR) (P)
 THE GROVE C133 (SR) (P)

SELECTION INDEX VALUES	
Market Target:	Index Value:
MSA-B2	+\$78

MEASUREMENTS

Scrotal Size |
 Weight |
 EMA |
 Rib Fat |
 Rump Fat |
 IMF |

BUYER:

\$:

JUNE 2017 PERFORMANCE HERDS AUSTRALIA BREEDPLAN EBVs

	CED	CEM	GL	BW	200	400	600	MCW	MILK	SS	CWT	EMA	RIB	RUMP	RBY	IMF
EBV	+1.0	+0.3	-2.2	+3.4	+34	+44	+59	+53	+7	+1.1	+44	+6.4	+1.0	+1.2	+1.1	+1.2
ACC	33%	28%	54%	65%	71%	66%	71%	61%	44%	73%	60%	51%	58%	58%	56%	51%

19 THE GROVE L0247 (SR) (P)

Tattoo: L0247 DOB: 12/09/2015 Colour: Red Reg No: BDBL0247

THE GROVE BODACIOUS D425 (SR) (P)
SIRE: THE GROVE F915 (SR) (P)
 THE GROVE A252 (SR) (P)
 NARRALDA LEDGER W48 (SR) (P)
DAM: THE GROVE B582 (SR) (P)
 THE GROVE Y101 (SR) (H)

SELECTION INDEX VALUES	
Market Target:	Index Value:
MSA-B2	+\$67

MEASUREMENTS

Scrotal Size |
 Weight |
 EMA |
 Rib Fat |
 Rump Fat |
 IMF |

BUYER:

\$:

JUNE 2017 PERFORMANCE HERDS AUSTRALIA BREEDPLAN EBVs

	CED	CEM	GL	BW	200	400	600	MCW	MILK	SS	CWT	EMA	RIB	RUMP	RBY	IMF
EBV	+2.2	-0.3	-2.5	+3.3	+43	+53	+69	+62	+2	+1.8	+47	+2.8	-0.1	-0.5	+0.2	+0.6
ACC	28%	25%	46%	61%	72%	66%	71%	60%	48%	73%	61%	50%	59%	59%	56%	51%

20 THE GROVE L0532 (SR) (P)

Tattoo: L0532 DOB: 14/08/2015 Colour: Red Reg No: BDBL0532

YAMBURGAN MITTIEBAH 3RD (SR) (P)
SIRE: TURANVILLE MITTIEBAH H132 (SR) (P)
 TURANVILLE E130 (SR) (P)
 THE GROVE REGENT D817 (SR) (P)
DAM: THE GROVE G0176 (SR) (P)
 THE GROVE Z329 (SR) (P)

SELECTION INDEX VALUES	
Market Target:	Index Value:
MSA-B2	+\$65

MEASUREMENTS	
Scrotal Size	
Weight	
EMA	
Rib Fat	
Rump Fat	
IMF	

BUYER:

\$:

JUNE 2017 PERFORMANCE HERDS AUSTRALIA BREEDPLAN EBVs

	CED	CEM	GL	BW	200	400	600	MCW	MILK	SS	CWT	EMA	RIB	RUMP	RBV	IMF
EBV	-1.0		-1.1	+4.5	+34	+48	+62	+67	+3	+1.3	+45	+5.3	-1.3	-1.9	+2.0	+0.6
ACC	27%		35%	58%	68%	63%	68%	59%	40%	71%	58%	48%	56%	56%	53%	47%

21 THE GROVE L0450 (SR) (P)

Tattoo: L0450 DOB: 20/09/2015 Colour: Red Reg No: BDBL0450

THE GROVE F915 (SR) (P)
SIRE: THE GROVE J0572 (SR) (P)
 THE GROVE E1110 (SR) (P)
 WOOLCOTT BMW Z305 (SR) (P)
DAM: THE GROVE MEREDITH D657 (SR) (P)
 THE GROVE MEREDITH X182 (SR) (P)

SELECTION INDEX VALUES	
Market Target:	Index Value:
MSA-B2	+\$74

MEASUREMENTS	
Scrotal Size	
Weight	
EMA	
Rib Fat	
Rump Fat	
IMF	

BUYER:

\$:

JUNE 2017 PERFORMANCE HERDS AUSTRALIA BREEDPLAN EBVs

	CED	CEM	GL	BW	200	400	600	MCW	MILK	SS	CWT	EMA	RIB	RUMP	RBV	IMF
EBV			-1.4	+3.1	+28	+43	+60	+62	+9	+0.6	+47	+6.0	-1.3	-1.6	+1.8	+1.0
ACC			34%	57%	70%	64%	69%	59%	41%	71%	59%	48%	57%	57%	54%	48%

22 THE GROVE L0402 (SR) (P)

Tattoo: L0402 DOB: 18/09/2015 Colour: Red Reg No: BDBL0402

SPRYS PATENTS ACE G38 (SR)
SIRE: THE GROVE J0613 (SR) (P)
 THE GROVE F699 (SR) (P)
 THE GROVE REFORM C942 (SR) (P)
DAM: THE GROVE G0982 (SR) (P)
 THE GROVE A403 (SR) (P)

SELECTION INDEX VALUES	
Market Target:	Index Value:
MSA-B2	+\$60

MEASUREMENTS	
Scrotal Size	
Weight	
EMA	
Rib Fat	
Rump Fat	
IMF	

BUYER:

\$:

JUNE 2017 PERFORMANCE HERDS AUSTRALIA BREEDPLAN EBVs

	CED	CEM	GL	BW	200	400	600	MCW	MILK	SS	CWT	EMA	RIB	RUMP	RBV	IMF
EBV	-0.7		-1.5	+4.8	+34	+42	+58	+64	+1	+1.6	+37	+3.0	-0.2	+0.2	+0.6	+0.7
ACC	25%		34%	58%	70%	64%	69%	59%	37%	71%	58%	48%	57%	57%	54%	47%

23 THE GROVE L0707 (SR) (P)

Tattoo: L0707 DOB: 27/10/2015 Colour: Red Reg No: BDBL0707

THE GROVE OSCAR A748 (SR) (P)
SIRE: THE GROVE TIDE-RIP E667 (SR) (P)
 THE GROVE RAMONA Z445 (SR) (P)
 NARRALDA BUSHRANGER B114 (SR) (P)
DAM: THE GROVE E1052 (SR) (P)
 THE GROVE X455 (SR) (P)

SELECTION INDEX VALUES	
Market Target:	Index Value:
MSA-B2	+\$58

MEASUREMENTS	
Scrotal Size	
Weight	
EMA	
Rib Fat	
Rump Fat	
IMF	

BUYER:

\$:

JUNE 2017 PERFORMANCE HERDS AUSTRALIA BREEDPLAN EBVs

	CED	CEM	GL	BW	200	400	600	MCW	MILK	SS	CWT	EMA	RIB	RUMP	RBV	IMF
EBV	-2.4	+0.8	-1.3	+5.7	+41	+49	+65	+72	+6	+1.5	+45	+6.7	-2.0	-2.7	+3.4	-0.3
ACC	39%	37%	49%	63%	71%	67%	70%	63%	53%	72%	61%	52%	60%	60%	58%	53%

24 THE GROVE INFORMANT L0799 (SR) (P)

Tattoo: L0799 DOB: 05/09/2015 Colour: Red Reg No: BDBL0799

THE GROVE INFORMANT Y463 (SR) (P)
SIRE: THE GROVE INFORMER F1131 (SR) (P)
 THE GROVE R.E. DALE W744 (SR) (P)
 BELMORE JACKAROO Z109 (SR) (P)
DAM: THE GROVE ROSE D014 (SR) (P)
 THE GROVE ROSE A943 (SR) (P)

SELECTION INDEX VALUES	
Market Target:	Index Value:
MSA-B2	+\$56

MEASUREMENTS	
Scrotal Size	
Weight	
EMA	
Rib Fat	
Rump Fat	
IMF	

BUYER: \$:

JUNE 2017 PERFORMANCE HERDS AUSTRALIA BREEDPLAN EBVs

	CED	CEM	GL	BW	200	400	600	MCW	MILK	SS	CWT	EMA	RIB	RUMP	RBY	IMF
EBV	+0.7	-1.2	-0.2	+3.1	+28	+41	+52	+34	+6	+0.9	+36	+3.7	-1.0	-1.5	+0.5	+0.9
ACC	34%	32%	48%	63%	72%	66%	70%	61%	50%	71%	60%	49%	57%	57%	55%	49%

25 THE GROVE L0541 (SR) (P)

Tattoo: L0541 DOB: 24/07/2015 Colour: Red Reg No: BDBL0541

YAMBURGAN MITTIEBAH 3RD (SR) (P)
SIRE: TURANVILLE MITTIEBAH H132 (SR) (P)
 TURANVILLE E130 (SR) (P)
 THE GROVE BODACIOUS D425 (SR) (P)
DAM: THE GROVE G0234 (SR) (H)
 THE GROVE A815 (SR) (P)

SELECTION INDEX VALUES	
Market Target:	Index Value:
MSA-B2	+\$61

MEASUREMENTS	
Scrotal Size	
Weight	
EMA	
Rib Fat	
Rump Fat	
IMF	

BUYER: \$:

JUNE 2017 PERFORMANCE HERDS AUSTRALIA BREEDPLAN EBVs

	CED	CEM	GL	BW	200	400	600	MCW	MILK	SS	CWT	EMA	RIB	RUMP	RBY	IMF
EBV	-1.6		-0.7	+4.4	+36	+55	+66	+63	+3	+2.6	+46	+4.0	-0.8	-1.5	+1.0	+0.6
ACC	26%		36%	58%	68%	63%	68%	59%	41%	70%	57%	47%	56%	56%	53%	47%

26 THE GROVE DATA L0971 (SR) (P)

Tattoo: L0971 DOB: 09/09/2015 Colour: Red Reg No: BDBL0971

THE GROVE INFORMANT Y463 (SR) (P)
SIRE: THE GROVE F516 (SR) (H)
 THE GROVE RE DALE A003 (SR) (P)
 WAUKARU 2109 GOLD 4188 (SR) (P)
DAM: THE GROVE PRIMROSE D156 (SR) (P)
 THE GROVE PRIMROSE W660 (SR) (P)

SELECTION INDEX VALUES	
Market Target:	Index Value:
MSA-B2	+\$77

MEASUREMENTS	
Scrotal Size	
Weight	
EMA	
Rib Fat	
Rump Fat	
IMF	

BUYER: \$:

JUNE 2017 PERFORMANCE HERDS AUSTRALIA BREEDPLAN EBVs

	CED	CEM	GL	BW	200	400	600	MCW	MILK	SS	CWT	EMA	RIB	RUMP	RBY	IMF
EBV	-1.8	-1.0	-1.8	+5.5	+46	+59	+85	+87	+11	+2.9	+57	+3.5	-2.6	-3.5	+2.4	+0.5
ACC	33%	30%	49%	61%	71%	65%	70%	60%	47%	72%	60%	51%	59%	59%	56%	51%



Bushy Doyle looking over a line of cattle by The Grove bloodlines at Blackall, 2016.

The Grove.

Australia's Premier Performance Shorthorn Herd

Lots 27-94 SPECIALLY SELECTED PERFORMANCE RECORDED SHORTHORN SIRES

27 THE GROVE L0204 (SR) (P)

Tattoo: L0204 DOB: 16/09/2015 Colour: Red Reg No: BDBL0204

THE GROVE TIDE-RIP E667 (SR) (P)

SIRE: THE GROVE J0588 (SR) (P)

THE GROVE E719 (SR) (P)

EDEN PARK STOCKMAN Y005 (SR) (P)

DAM: THE GROVE C111 (SR) (P)

THE GROVE OLGA Z423 (SR) (P)

BUYER:

\$:

SELECTION INDEX VALUES

Market Target: Index Value:

MSA-B2 +\$55

MEASUREMENTS

Scrotal Size |

Weight |

EMA |

Rib Fat |

Rump Fat |

IMF |

JUNE 2017 PERFORMANCE HERDS AUSTRALIA BREEDPLAN EBVs

	CED	CEM	GL	BW	200	400	600	MCW	MILK	SS	CWT	EMA	RIB	RUMP	RBY	IMF
EBV	-0.4		-0.2	+3.3	+26	+37	+44	+27	+2	+1.8	+35	+4.7	-0.2	+0.7	+0.9	+0.8
ACC	25%		39%	60%	70%	65%	69%	59%	45%	71%	59%	48%	57%	57%	54%	47%

28 THE GROVE L0208 (SR) (P)

Tattoo: L0208 DOB: 18/08/2015 Colour: Red Reg No: BDBL0208

THE GROVE TIDE-RIP E667 (SR) (P)

SIRE: THE GROVE J0588 (SR) (P)

THE GROVE E719 (SR) (P)

MARRINGTON THEODORE Y69 (SR) (P)

DAM: THE GROVE C548 (SR) (P)

THE GROVE W377 (SR) (P)

BUYER:

\$:

SELECTION INDEX VALUES

Market Target: Index Value:

MSA-B2 +\$67

MEASUREMENTS

Scrotal Size |

Weight |

EMA |

Rib Fat |

Rump Fat |

IMF |

JUNE 2017 PERFORMANCE HERDS AUSTRALIA BREEDPLAN EBVs

	CED	CEM	GL	BW	200	400	600	MCW	MILK	SS	CWT	EMA	RIB	RUMP	RBY	IMF
EBV			-1.0	+4.8	+37	+48	+67	+61	+5	+1.5	+45	+4.6	-1.5	-1.3	+2.0	+0.3
ACC			31%	57%	70%	64%	69%	58%	43%	71%	58%	45%	54%	54%	51%	44%

29 THE GROVE L0215 (SR) (P)

Tattoo: L0215 DOB: 23/08/2015 Colour: Red Reg No: BDBL0215

THE GROVE F323 (SR) (P)

SIRE: THE GROVE BLOTCH H1182 (SR) (P)

THE GROVE KOOKA'S DALE D096 (SR) (P)

SPRYS LEGEND Z096 (SR) (P)

DAM: THE GROVE E1036 (SR) (SC)

THE GROVE X403 (SR) (P)

BUYER:

\$:

SELECTION INDEX VALUES

Market Target: Index Value:

MSA-B2 +\$69

MEASUREMENTS

Scrotal Size |

Weight |

EMA |

Rib Fat |

Rump Fat |

IMF |

JUNE 2017 PERFORMANCE HERDS AUSTRALIA BREEDPLAN EBVs

	CED	CEM	GL	BW	200	400	600	MCW	MILK	SS	CWT	EMA	RIB	RUMP	RBY	IMF
EBV	-3.6		-1.1	+5.9	+44	+56	+80	+94	+5	+1.3	+51	+3.8	+0.1	+0.0	+0.5	+0.9
ACC	27%		45%	61%	70%	65%	70%	59%	39%	72%	59%	49%	57%	57%	54%	48%

30 THE GROVE L0265 (SR) (P)

Tattoo: L0265 DOB: 16/10/2015 Colour: Red Reg No: BDBL0265

THE GROVE BODACIOUS D425 (SR) (P)
SIRE: THE GROVE F915 (SR) (P)
 THE GROVE A252 (SR) (P)
 MARRINGTON ANZAC Y63 (SR) (P)
DAM: THE GROVE B683 (SR) (P)
 THE GROVE V323 (SR) (SC)

SELECTION INDEX VALUES

Market Target: Index Value:
 MSA-B2 +\$73

MEASUREMENTS

Scrotal Size |
 Weight |
 EMA |
 Rib Fat |
 Rump Fat |
 IMF |

BUYER: \$:

JUNE 2017 PERFORMANCE HERDS AUSTRALIA BREEDPLAN EBVs

	CED	CEM	GL	BW	200	400	600	MCW	MILK	SS	CWT	EMA	RIB	RUMP	RBV	IMF
EBV	+1.9		-2.1	+3.4	+38	+50	+70	+69	+2	+1.6	+46	+2.5	-0.5	-0.4	+0.1	+1.0
ACC	25%		41%	61%	72%	66%	70%	59%	47%	72%	61%	50%	57%	57%	55%	50%

31 THE GROVE L0317 (SR) (P)

Tattoo: L0317 DOB: 07/08/2015 Colour: Red Reg No: BDBL0317

THE GROVE F323 (SR) (P)
SIRE: THE GROVE BLOTCH H1182 (SR) (P)
 THE GROVE KOOKA'S DALE D096 (SR) (P)
 SPRYS LEGEND Z096 (SR) (P)
DAM: THE GROVE E1035 (SR) (P)
 THE GROVE X436 (SR) (P)

SELECTION INDEX VALUES

Market Target: Index Value:
 MSA-B2 +\$52

MEASUREMENTS

Scrotal Size |
 Weight |
 EMA |
 Rib Fat |
 Rump Fat |
 IMF |

BUYER: \$:

JUNE 2017 PERFORMANCE HERDS AUSTRALIA BREEDPLAN EBVs

	CED	CEM	GL	BW	200	400	600	MCW	MILK	SS	CWT	EMA	RIB	RUMP	RBV	IMF
EBV	-3.8		-1.1	+5.9	+42	+49	+68	+76	+4	+1.2	+41	+2.7	-1.1	-1.6	+0.8	+0.5
ACC	28%		46%	61%	71%	65%	70%	59%	40%	72%	59%	49%	57%	57%	54%	48%

32 THE GROVE L0430 (SR) (P)

Tattoo: L0430 DOB: 12/09/2015 Colour: Red Reg No: BDBL0430

THE GROVE F915 (SR) (P)
SIRE: THE GROVE J0572 (SR) (P)
 THE GROVE E1110 (SR) (P)
 MOOMBI IDEAL X13 (SR) (P)
DAM: THE GROVE IDEAL DALE B304 (SR) (P)
 THE GROVE C.K. DALE W733 (SR) (P)

SELECTION INDEX VALUES

Market Target: Index Value:
 MSA-B2 +\$62

MEASUREMENTS

Scrotal Size |
 Weight |
 EMA |
 Rib Fat |
 Rump Fat |
 IMF |

BUYER: \$:

JUNE 2017 PERFORMANCE HERDS AUSTRALIA BREEDPLAN EBVs

	CED	CEM	GL	BW	200	400	600	MCW	MILK	SS	CWT	EMA	RIB	RUMP	RBV	IMF
EBV			-1.3	+3.9	+34	+43	+63	+64	+5	+1.4	+44	+5.1	-2.2	-3.1	+2.5	+0.4
ACC			32%	57%	70%	65%	69%	59%	43%	71%	59%	49%	59%	59%	56%	49%

33 THE GROVE L0439 (SR) (P)

Tattoo: L0439 DOB: 07/09/2015 Colour: Red Reg No: BDBL0439

THE GROVE F915 (SR) (P)
SIRE: THE GROVE J0572 (SR) (P)
 THE GROVE E1110 (SR) (P)
 FUTURITY SPOTLIGHT Y042 (SR) (P)
DAM: THE GROVE LILY D794 (SR) (P)
 THE GROVE LILY Y654 (SR) (H)

SELECTION INDEX VALUES

Market Target: Index Value:
 MSA-B2 +\$67

MEASUREMENTS

Scrotal Size |
 Weight |
 EMA |
 Rib Fat |
 Rump Fat |
 IMF |

BUYER: \$:

JUNE 2017 PERFORMANCE HERDS AUSTRALIA BREEDPLAN EBVs

	CED	CEM	GL	BW	200	400	600	MCW	MILK	SS	CWT	EMA	RIB	RUMP	RBV	IMF
EBV			-2.6	+3.7	+34	+43	+60	+61	+2	+1.6	+40	+5.0	-0.1	+0.1	+1.1	+0.7
ACC			33%	57%	70%	64%	69%	59%	43%	71%	58%	47%	55%	55%	53%	46%

34 THE GROVE L0449 (SR) (P)

Tattoo: L0449 DOB: 17/09/2015 Colour: Red Reg No: BDBL0449

THE GROVE F915 (SR) (P)
SIRE: THE GROVE J0572 (SR) (P)
 THE GROVE E1110 (SR) (P)
 THE GROVE OSCAR A748 (SR) (P)
DAM: THE GROVE D399 (SR) (P)
 THE GROVE X446 (SR) (P)

SELECTION INDEX VALUES	
Market Target:	Index Value:
MSA-B2	+\$71

MEASUREMENTS
Scrotal Size
Weight
EMA
Rib Fat
Rump Fat
IMF

BUYER: \$:

JUNE 2017 PERFORMANCE HERDS AUSTRALIA BREEDPLAN EBVs																
	CED	CEM	GL	BW	200	400	600	MCW	MILK	SS	CWT	EMA	RIB	RUMP	RBV	IMF
EBV	-0.6		-2.2	+4.4	+37	+50	+69	+65	+4	+1.4	+46	+6.2	-0.9	-1.3	+2.0	+0.5
ACC	26%		39%	57%	70%	64%	69%	59%	42%	71%	59%	49%	58%	58%	55%	49%

35 THE GROVE L0451 (SR) (P)

Tattoo: L0451 DOB: 29/11/2015 Colour: Roan Reg No: BDBL0451

THE GROVE F915 (SR) (P)
SIRE: THE GROVE J0572 (SR) (P)
 THE GROVE E1110 (SR) (P)
 THE GROVE NINJA Z065 (SR) (P)
DAM: THE GROVE D685 (SR) (P)
 THE GROVE X361 (SR) (P)

SELECTION INDEX VALUES	
Market Target:	Index Value:
MSA-B2	+\$93

MEASUREMENTS
Scrotal Size
Weight
EMA
Rib Fat
Rump Fat
IMF

BUYER: \$:

JUNE 2017 PERFORMANCE HERDS AUSTRALIA BREEDPLAN EBVs																
	CED	CEM	GL	BW	200	400	600	MCW	MILK	SS	CWT	EMA	RIB	RUMP	RBV	IMF
EBV			-2.2	+5.4	+45	+59	+91	+92	+3	+1.8	+58	+5.7	-1.3	-1.5	+2.2	+0.8
ACC			33%	58%	70%	65%	69%	59%	40%	71%	59%	48%	57%	57%	54%	48%

36 THE GROVE L0476 1/4 SENEPOL (DR) (P)

Tattoo: L0476 DOB: 26/08/2015 Colour: Red Reg No: BDBL0476

SPRYS PATENTS ACE G38 (SR)
SIRE: THE GROVE J0606 (SR) (P)
 THE GROVE F532 (SR) (P)
 SE FIVE STAR 080914 (DR) (P)
DAM: THE GROVE F771 (DR) (P)
 THE GROVE W059 (SR) (P)

SELECTION INDEX VALUES	
Market Target:	Index Value:
MSA-B2	+\$44

MEASUREMENTS
Scrotal Size
Weight
EMA
Rib Fat
Rump Fat
IMF

BUYER: \$:

JUNE 2017 PERFORMANCE HERDS AUSTRALIA BREEDPLAN EBVs																
	CED	CEM	GL	BW	200	400	600	MCW	MILK	SS	CWT	EMA	RIB	RUMP	RBV	IMF
EBV			-2.1	+0.5	+17	+29	+28	+21	+4	+1.3	+29	+3.4	-0.3	+0.2	+0.5	+0.7
ACC			32%	56%	65%	61%	65%	55%	34%	67%	54%	42%	50%	50%	47%	40%

37 THE GROVE L0545 (SR) (P)

Tattoo: L0545 DOB: 10/06/2015 Colour: Red Reg No: BDBL0545

YAMBURGAN MITTIEBAH 3RD (SR) (P)
SIRE: TURANVILLE MITTIEBAH H132 (SR) (P)
 TURANVILLE E130 (SR) (P)
 DUNBEACON BIG BILL (SR) (P)
DAM: THE GROVE KIMBERLEY G0363 (SR) (P)
 THE GROVE KIMBERLY X718 (SR) (P)

SELECTION INDEX VALUES	
Market Target:	Index Value:
MSA-B2	+\$69

MEASUREMENTS
Scrotal Size
Weight
EMA
Rib Fat
Rump Fat
IMF

BUYER: \$:

JUNE 2017 PERFORMANCE HERDS AUSTRALIA BREEDPLAN EBVs																
	CED	CEM	GL	BW	200	400	600	MCW	MILK	SS	CWT	EMA	RIB	RUMP	RBV	IMF
EBV	-1.0		-1.2	+4.9	+41	+56	+63	+63	+7	+1.9	+44	+4.9	+1.0	+1.2	-0.2	+1.3
ACC	27%		35%	58%	68%	63%	68%	59%	42%	70%	57%	47%	56%	56%	53%	46%

38 THE GROVE DATA L0550 (SR) (P)

Tattoo: L0550 DOB: 01/09/2015 Colour: Red Reg No: BDBL0550

THE GROVE INFORMANT Y463 (SR) (P)

SIRE: THE GROVE F516 (SR) (H)

THE GROVE RE DALE A003 (SR) (P)

THE GROVE KOOKABURRA W735 (SR) (P)

DAM: THE GROVE KOOKAS DALE E1237 (SR) (P)

THE GROVE R.E. DALE W744 (SR) (P)

BUYER:

\$:

SELECTION INDEX VALUES

Market Target: Index Value:
MSA-B2 +\$83

MEASUREMENTS

Scrotal Size |

Weight |

EMA |

Rib Fat |

Rump Fat |

IMF |

JUNE 2017 PERFORMANCE HERDS AUSTRALIA BREEDPLAN EBVs

	CED	CEM	GL	BW	200	400	600	MCW	MILK	SS	CWT	EMA	RIB	RUMP	RBY	IMF
EBV	-3.2	-0.8	-1.0	+5.0	+41	+53	+83	+89	+11	+1.5	+57	+6.0	-0.9	-1.5	+1.7	+1.2
ACC	41%	37%	53%	66%	74%	68%	72%	62%	50%	74%	63%	54%	60%	60%	58%	54%

39 THE GROVE L0563 (SR) (P)

Tattoo: L0563 DOB: 04/09/2015 Colour: Red Reg No: BDBL0563

THE GROVE INFORMANT Y463 (SR) (P)

SIRE: THE GROVE F516 (SR) (H)

THE GROVE RE DALE A003 (SR) (P)

WAUKARU BRISBANE 4111 (SR) (P)

DAM: THE GROVE D779 (SR) (P)

N98X00749 (SR)

BUYER:

\$:

SELECTION INDEX VALUES

Market Target: Index Value:
MSA-B2 +\$74

MEASUREMENTS

Scrotal Size |

Weight |

EMA |

Rib Fat |

Rump Fat |

IMF |

JUNE 2017 PERFORMANCE HERDS AUSTRALIA BREEDPLAN EBVs

	CED	CEM	GL	BW	200	400	600	MCW	MILK	SS	CWT	EMA	RIB	RUMP	RBY	IMF
EBV	-4.0	-1.1	-0.6	+4.9	+33	+50	+72	+79	+7	+2.6	+52	+5.8	-1.5	-1.5	+2.5	+0.9
ACC	32%	30%	49%	60%	70%	64%	69%	57%	47%	71%	57%	41%	48%	48%	47%	44%

40 THE GROVE L0570 (SR) (P)

Tattoo: L0570 DOB: 07/09/2015 Colour: Red Reg No: BDBL0570

THE GROVE INFORMANT Y463 (SR) (P)

SIRE: THE GROVE F516 (SR) (H)

THE GROVE RE DALE A003 (SR) (P)

THE GROVE OSCAR A748 (SR) (P)

DAM: THE GROVE OSCARS YLVIA E1220 (SR) (P)

THE GROVE C.K. SYLVIA X804 (SR) (P)

BUYER:

\$:

SELECTION INDEX VALUES

Market Target: Index Value:
MSA-B2 +\$70

MEASUREMENTS

Scrotal Size |

Weight |

EMA |

Rib Fat |

Rump Fat |

IMF |

JUNE 2017 PERFORMANCE HERDS AUSTRALIA BREEDPLAN EBVs

	CED	CEM	GL	BW	200	400	600	MCW	MILK	SS	CWT	EMA	RIB	RUMP	RBY	IMF
EBV	-3.7	-0.5	-1.4	+5.5	+41	+51	+72	+67	+8	+1.7	+47	+5.8	-1.3	-2.0	+2.0	+0.9
ACC	37%	35%	49%	64%	72%	66%	71%	62%	49%	73%	61%	52%	59%	59%	56%	51%

41 THE GROVE L0575 (SR) (P)

Tattoo: L0575 DOB: 24/10/2015 Colour: Red Reg No: BDBL0575

THE GROVE INFORMANT Y463 (SR) (P)

SIRE: THE GROVE F516 (SR) (H)

THE GROVE RE DALE A003 (SR) (P)

THE GROVE X380 (SR) (P)

DAM: THE GROVE B860 (SR) (P)

THE GROVE X675 (SR) (P)

BUYER:

\$:

SELECTION INDEX VALUES

Market Target: Index Value:
MSA-B2 +\$53

MEASUREMENTS

Scrotal Size |

Weight |

EMA |

Rib Fat |

Rump Fat |

IMF |

JUNE 2017 PERFORMANCE HERDS AUSTRALIA BREEDPLAN EBVs

	CED	CEM	GL	BW	200	400	600	MCW	MILK	SS	CWT	EMA	RIB	RUMP	RBY	IMF
EBV	-1.4	-0.1	-0.7	+3.9	+34	+38	+49	+48	+8	+1.2	+39	+4.4	-1.2	-1.8	+1.4	+0.7
ACC	32%	30%	44%	61%	71%	66%	71%	61%	49%	72%	60%	51%	60%	60%	57%	52%

42 THE GROVE DATA L0579 (SR)

Tattoo: L0579 DOB: 16/10/2015 Colour: Red Reg No: BDBL0579

THE GROVE INFORMANT Y463 (SR) (P)
SIRE: THE GROVE F516 (SR) (H)
 THE GROVE RE DALE A003 (SR) (P)
 BELMORE JACKAROO Z109 (SR) (P)
DAM: THE GROVE JILLAROO D218 (SR) (P)
 THE GROVE PAIGE Z1061 (SR) (H)

SELECTION INDEX VALUES

Market Target: Index Value:
 MSA-B2 +\$74

MEASUREMENTS

Scrotal Size |
 Weight |
 EMA |
 Rib Fat |
 Rump Fat |
 IMF |

BUYER: \$:

JUNE 2017 PERFORMANCE HERDS AUSTRALIA BREEDPLAN EBVs

	CED	CEM	GL	BW	200	400	600	MCW	MILK	SS	CWT	EMA	RIB	RUMP	RBV	IMF
EBV	-1.5	-1.3	+0.2	+4.3	+36	+47	+67	+56	+6	+1.0	+46	+4.7	+0.1	+0.1	+0.3	+1.6
ACC	36%	32%	49%	64%	72%	67%	72%	62%	49%	74%	62%	52%	60%	60%	58%	53%

43 THE GROVE L0583 (SR) (H)

Tattoo: L0583 DOB: 28/08/2015 Colour: Red Reg No: BDBL0583

THE GROVE INFORMANT Y463 (SR) (P)
SIRE: THE GROVE F516 (SR) (H)
 THE GROVE RE DALE A003 (SR) (P)
 THE GROVE LANCELOT X266 (SR) (P)
DAM: THE GROVE B845 (SR) (H)
 N97/01442 (SR)

SELECTION INDEX VALUES

Market Target: Index Value:
 MSA-B2 +\$78

MEASUREMENTS

Scrotal Size |
 Weight |
 EMA |
 Rib Fat |
 Rump Fat |
 IMF |

BUYER: \$:

JUNE 2017 PERFORMANCE HERDS AUSTRALIA BREEDPLAN EBVs

	CED	CEM	GL	BW	200	400	600	MCW	MILK	SS	CWT	EMA	RIB	RUMP	RBV	IMF
EBV	-3.3	-0.4	-1.2	+6.2	+43	+57	+85	+92	+5	+2.8	+58	+5.5	-2.4	-3.0	+3.1	+0.3
ACC	32%	30%	45%	61%	72%	66%	71%	59%	49%	72%	61%	51%	58%	58%	56%	51%

44 THE GROVE L0584 (SR) (P)

Tattoo: L0584 DOB: 09/10/2015 Colour: Red Reg No: BDBL0584

THE GROVE INFORMANT Y463 (SR) (P)
SIRE: THE GROVE F516 (SR) (H)
 THE GROVE RE DALE A003 (SR) (P)
 NARRALDA BUSHRANGER B114 (SR) (P)
DAM: THE GROVE E012 (SR) (P)
 THE GROVE B094 (SR) (P)

SELECTION INDEX VALUES

Market Target: Index Value:
 MSA-B2 +\$80

MEASUREMENTS

Scrotal Size |
 Weight |
 EMA |
 Rib Fat |
 Rump Fat |
 IMF |

BUYER: \$:

JUNE 2017 PERFORMANCE HERDS AUSTRALIA BREEDPLAN EBVs

	CED	CEM	GL	BW	200	400	600	MCW	MILK	SS	CWT	EMA	RIB	RUMP	RBV	IMF
EBV	-2.9	+0.1	-0.9	+4.9	+35	+51	+77	+90	+8	+2.4	+50	+5.5	-1.5	-1.9	+2.1	+1.0
ACC	35%	31%	50%	64%	72%	66%	71%	60%	48%	73%	60%	51%	59%	59%	57%	51%

45 THE GROVE L0591 (SR) (P)

Tattoo: L0591 DOB: 22/08/2015 Colour: Red Little White Reg No: BDBL0591

THE GROVE SANTIAGO D170 (SR) (P)
SIRE: WOOLCOTT H149 (SR) (H)
 WOOLCOTT C214 (SR) (P)
 THE GROVE ROCKHAMPTON C747 (SR) (P)
DAM: THE GROVE F413 (SR) (P)
 THE GROVE C903 (SR) (P)

SELECTION INDEX VALUES

Market Target: Index Value:
 MSA-B2 +\$74

MEASUREMENTS

Scrotal Size |
 Weight |
 EMA |
 Rib Fat |
 Rump Fat |
 IMF |

BUYER: \$:

JUNE 2017 PERFORMANCE HERDS AUSTRALIA BREEDPLAN EBVs

	CED	CEM	GL	BW	200	400	600	MCW	MILK	SS	CWT	EMA	RIB	RUMP	RBV	IMF
EBV	-0.3		-1.5	+3.7	+29	+45	+69	+84	+5	+0.9	+45	+5.1	+0.1	-0.2	+0.6	+1.1
ACC	25%		30%	59%	70%	63%	69%	60%	39%	71%	58%	46%	55%	55%	52%	44%

46 THE GROVE L0666 (SR) (P)

Tattoo: L0666 DOB: 04/10/2015 Colour: Red Reg No: BDBL0666

THE GROVE TIDE-RIP E667 (SR) (P)
SIRE: THE GROVE J0588 (SR) (P)
 THE GROVE E719 (SR) (P)
 SPRYS TRUE BLUE Y033 (SR) (P)
DAM: THE GROVE A143 (SR) (P)
 THE GROVE U373 (SR) (P)

SELECTION INDEX VALUES	
Market Target:	Index Value:
MSA-B2	+\$59

MEASUREMENTS

Scrotal Size |
 Weight |
 EMA |
 Rib Fat |
 Rump Fat |
 IMF |

BUYER:

\$:

JUNE 2017 PERFORMANCE HERDS AUSTRALIA BREEDPLAN EBVs

	CED	CEM	GL	BW	200	400	600	MCW	MILK	SS	CWT	EMA	RIB	RUMP	RBV	IMF
EBV	+0.4		-1.3	+3.5	+29	+36	+58	+49	+6	+1.5	+36	+4.1	-2.3	-3.4	+2.0	+0.3
ACC	27%		40%	57%	70%	64%	69%	57%	45%	71%	58%	48%	57%	57%	54%	47%

47 THE GROVE BLOTCH L0689 (SR) (P)

Tattoo: L0689 DOB: 22/08/2015 Colour: Red Reg No: BDBL0689

THE GROVE F323 (SR) (P)
SIRE: THE GROVE BLOTCH H1182 (SR) (P)
 THE GROVE KOOKA'S DALE D096 (SR) (P)
 DUNBEACON BIG BILL (SR) (P)
DAM: THE GROVE ISOBEL E746 (SR) (P)
 THE GROVE KASPERS ISOBEL A091 (SR) (H)

SELECTION INDEX VALUES	
Market Target:	Index Value:
MSA-B2	+\$59

MEASUREMENTS

Scrotal Size |
 Weight |
 EMA |
 Rib Fat |
 Rump Fat |
 IMF |

BUYER:

\$:

JUNE 2017 PERFORMANCE HERDS AUSTRALIA BREEDPLAN EBVs

	CED	CEM	GL	BW	200	400	600	MCW	MILK	SS	CWT	EMA	RIB	RUMP	RBV	IMF
EBV	-3.2		-1.6	+4.9	+39	+52	+62	+49	+6	+0.8	+44	+5.2	+0.2	+0.3	+0.9	+0.9
ACC	30%		48%	62%	71%	65%	70%	60%	40%	72%	59%	49%	58%	58%	55%	49%

48 THE GROVE L0800 (SR) (P)

Tattoo: L0800 DOB: 20/08/2015 Colour: Red Reg No: BDBL0800

THE GROVE INFORMANT Y463 (SR) (P)
SIRE: THE GROVE INFORMER F1131 (SR) (P)
 THE GROVE R.E. DALE W744 (SR) (P)
 THE GROVE KOSIOSKO W510 (SR) (P)
DAM: THE GROVE B088 (SR) (P)
 THE GROVE X683 (SR) (P)

SELECTION INDEX VALUES	
Market Target:	Index Value:
MSA-B2	+\$54

MEASUREMENTS

Scrotal Size |
 Weight |
 EMA |
 Rib Fat |
 Rump Fat |
 IMF |

BUYER:

\$:

JUNE 2017 PERFORMANCE HERDS AUSTRALIA BREEDPLAN EBVs

	CED	CEM	GL	BW	200	400	600	MCW	MILK	SS	CWT	EMA	RIB	RUMP	RBV	IMF
EBV	+0.6	+0.4	-0.9	+3.0	+28	+39	+55	+55	+5	+1.1	+43	+4.0	-1.0	-1.2	+1.4	+0.2
ACC	31%	29%	42%	60%	72%	66%	71%	61%	51%	71%	61%	51%	59%	60%	57%	53%

49 THE GROVE L0926 (SR) (P)

Tattoo: L0926 DOB: 02/10/2015 Colour: Red Reg No: BDBL0926

THE GROVE D604 (SR) (P)
SIRE: THE GROVE H0144 (SR) (P)
 THE GROVE NELL Z451 (SR) (P)
 THE GROVE RED LEGEND C815 (SR) (P)
DAM: THE GROVE RED DALE F1091 (SR) (P)
 THE GROVE C.K. DALE W733 (SR) (P)

SELECTION INDEX VALUES	
Market Target:	Index Value:
MSA-B2	+\$68

MEASUREMENTS

Scrotal Size |
 Weight |
 EMA |
 Rib Fat |
 Rump Fat |
 IMF |

BUYER:

\$:

JUNE 2017 PERFORMANCE HERDS AUSTRALIA BREEDPLAN EBVs

	CED	CEM	GL	BW	200	400	600	MCW	MILK	SS	CWT	EMA	RIB	RUMP	RBV	IMF
EBV	+0.3		-2.0	+3.0	+27	+45	+62	+73	+4	+1.8	+42	+3.8	+0.1	+0.0	+0.2	+1.0
ACC	26%		40%	71%	70%	64%	69%	59%	42%	72%	58%	47%	54%	54%	51%	44%

50 THE GROVE L0931 (SR) (P)

Tattoo: L0931 DOB: 26/10/2015 Colour: Red Reg No: BDBL0931

THE GROVE D604 (SR) (P)
SIRE: THE GROVE H0144 (SR) (P)
 THE GROVE NELL Z451 (SR) (P)

BROUGHTON PARK SENSATION W062 (SR) (P)
DAM: THE GROVE SENSATIONAL F1108 (SR) (P)
 THE GROVE C.K. DALE W747 (SR) (P)

BUYER:

SELECTION INDEX VALUES

Market Target: Index Value:
 MSA-B2 +\$55

MEASUREMENTS

Scrotal Size |
 Weight |
 EMA |
 Rib Fat |
 Rump Fat |
 IMF |

JUNE 2017 PERFORMANCE HERDS AUSTRALIA BREEDPLAN EBVs

	CED	CEM	GL	BW	200	400	600	MCW	MILK	SS	CWT	EMA	RIB	RUMP	RBY	IMF
EBV			-1.2	+3.9	+26	+40	+58	+60	+4	+2.2	+33	+2.9	-1.2	-1.7	+0.6	+0.5
ACC			29%	56%	67%	62%	67%	57%	40%	71%	56%	44%	51%	51%	48%	40%

51 THE GROVE L0269 (SR) (P)

Tattoo: L0269 DOB: 03/10/2015 Colour: Red Reg No: BDBL0269

THE GROVE BODACIOUS D425 (SR) (P)
SIRE: THE GROVE F915 (SR) (P)
 THE GROVE A252 (SR) (P)

NARRALDA LEDGER W48 (SR) (P)
DAM: THE GROVE B090 (SR) (P)
 THE GROVE X869 (SR) (P)

BUYER:

SELECTION INDEX VALUES

Market Target: Index Value:
 MSA-B2 +\$57

MEASUREMENTS

Scrotal Size |
 Weight |
 EMA |
 Rib Fat |
 Rump Fat |
 IMF |

JUNE 2017 PERFORMANCE HERDS AUSTRALIA BREEDPLAN EBVs

	CED	CEM	GL	BW	200	400	600	MCW	MILK	SS	CWT	EMA	RIB	RUMP	RBY	IMF
EBV	+2.0		-1.9	+1.8	+29	+38	+49	+56	+2	+3.2	+38	+4.0	-0.7	-1.3	+1.0	+0.5
ACC	26%		45%	60%	72%	66%	70%	60%	46%	72%	60%	50%	58%	58%	55%	50%

52 THE GROVE L0369 (SR) (H)

Tattoo: L0369 DOB: 16/10/2015 Colour: Red Reg No: BDBL0369

YAMBURGAN MITTIEBAH 3RD (SR) (P)
SIRE: TURANVILLE MITTIEBAH F114 (SR) (P)
 TURANVILLE RIDDLE C99 (SR) (P)

SPRYS WHAT A RIPPER Z122 (SR) (P)
DAM: THE GROVE D340 (SR) (P)
 THE GROVE W553 (SR) (H)

BUYER:

SELECTION INDEX VALUES

Market Target: Index Value:
 MSA-B2 +\$44

MEASUREMENTS

Scrotal Size |
 Weight |
 EMA |
 Rib Fat |
 Rump Fat |
 IMF |

JUNE 2017 PERFORMANCE HERDS AUSTRALIA BREEDPLAN EBVs

	CED	CEM	GL	BW	200	400	600	MCW	MILK	SS	CWT	EMA	RIB	RUMP	RBY	IMF
EBV	-3.2	-0.1	+0.2	+4.8	+34	+43	+50	+40	+4	+2.6	+40	+4.6	-0.2	+0.1	+1.2	+0.2
ACC	30%	25%	39%	60%	71%	65%	70%	60%	45%	72%	59%	48%	57%	57%	55%	48%

53 THE GROVE L0404 (DR) (P)

Tattoo: L0404 DOB: 10/08/2015 Colour: Red Reg No: BDBL0404

SPRYS PATENTS ACE G38 (SR)
SIRE: THE GROVE J0613 (SR) (P)
 THE GROVE F699 (SR) (P)

THE GROVE E1119 (DR) (H)
DAM: THE GROVE G0940 (DR) (P)
 THE GROVE A267 (SR) (P)

BUYER:

SELECTION INDEX VALUES

Market Target: Index Value:
 MSA-B2 +\$48

MEASUREMENTS

Scrotal Size |
 Weight |
 EMA |
 Rib Fat |
 Rump Fat |
 IMF |

JUNE 2017 PERFORMANCE HERDS AUSTRALIA BREEDPLAN EBVs

	CED	CEM	GL	BW	200	400	600	MCW	MILK	SS	CWT	EMA	RIB	RUMP	RBY	IMF
EBV			-2.4	+3.8	+34	+39	+47	+41	+3	+2.5	+31	+3.4	-1.0	-1.2	+1.5	+0.2
ACC			34%	58%	69%	63%	68%	58%	35%	70%	58%	47%	57%	57%	54%	47%

54 THE GROVE L0410 (SR) (P)

Tattoo: L0410 DOB: 08/08/2015 Colour: Red Reg No: BDBL0410

SPRYS PATENTS ACE G38 (SR)
SIRE: THE GROVE J0613 (SR) (P)
 THE GROVE F699 (SR) (P)
 THE GROVE D851 (SR) (P)
DAM: THE GROVE G0548 (SR) (P)
 THE GROVE B978 (SR) (P)

SELECTION INDEX VALUES	
Market Target:	Index Value:
MSA-B2	+\$58

MEASUREMENTS
Scrotal Size
Weight
EMA
Rib Fat
Rump Fat
IMF

BUYER: \$:

JUNE 2017 PERFORMANCE HERDS AUSTRALIA BREEDPLAN EBVs																
	CED	CEM	GL	BW	200	400	600	MCW	MILK	SS	CWT	EMA	RIB	RUMP	RBY	IMF
EBV	-1.0		-0.5	+4.6	+33	+38	+54	+62	+2	+2.1	+35	+3.6	-0.8	-1.0	+1.0	+0.7
ACC	25%		40%	59%	70%	64%	69%	59%	37%	71%	58%	48%	57%	57%	54%	48%

55 THE GROVE L0524 (SR) (H)

Tattoo: L0524 DOB: 03/08/2015 Colour: Red Reg No: BDBL0524

YAMBURGAN MITTIEBAH 3RD (SR) (P)
SIRE: TURANVILLE MITTIEBAH H132 (SR) (P)
 TURANVILLE E130 (SR) (P)
 THE GROVE TANKER E279 (SR) (P)
DAM: THE GROVE G0833 (SR) (P)
 THE GROVE W221 (SR) (P)

SELECTION INDEX VALUES	
Market Target:	Index Value:
MSA-B2	+\$68

MEASUREMENTS
Scrotal Size
Weight
EMA
Rib Fat
Rump Fat
IMF

BUYER: \$:

JUNE 2017 PERFORMANCE HERDS AUSTRALIA BREEDPLAN EBVs																
	CED	CEM	GL	BW	200	400	600	MCW	MILK	SS	CWT	EMA	RIB	RUMP	RBY	IMF
EBV	-1.6		-1.3	+5.3	+41	+58	+72	+70	+8	+1.4	+54	+6.0	-0.6	-0.9	+1.9	+0.4
ACC	25%		34%	57%	68%	63%	68%	58%	40%	70%	57%	46%	55%	55%	52%	45%

56 THE GROVE L0525 (SR) (P)

Tattoo: L0525 DOB: 01/09/2015 Colour: Red Reg No: BDBL0525

YAMBURGAN MITTIEBAH 3RD (SR) (P)
SIRE: TURANVILLE MITTIEBAH H132 (SR) (P)
 TURANVILLE E130 (SR) (P)
 THE GROVE Z335 (SR) (P)
DAM: THE GROVE G0130 (SR) (P)
 THE GROVE Z1042 (SR) (P)

SELECTION INDEX VALUES	
Market Target:	Index Value:
MSA-B2	+\$60

MEASUREMENTS
Scrotal Size
Weight
EMA
Rib Fat
Rump Fat
IMF

BUYER: \$:

JUNE 2017 PERFORMANCE HERDS AUSTRALIA BREEDPLAN EBVs																
	CED	CEM	GL	BW	200	400	600	MCW	MILK	SS	CWT	EMA	RIB	RUMP	RBY	IMF
EBV	-0.2		-1.0	+3.7	+31	+44	+52	+56	+3	+2.0	+36	+3.2	+0.1	+0.0	-0.4	+1.2
ACC	25%		35%	58%	69%	63%	68%	59%	41%	71%	58%	48%	57%	57%	54%	47%

57 THE GROVE L0527 (SR) (P)

Tattoo: L0527 DOB: 26/08/2015 Colour: Red Reg No: BDBL0527

YAMBURGAN MITTIEBAH 3RD (SR) (P)
SIRE: TURANVILLE MITTIEBAH H132 (SR) (P)
 TURANVILLE E130 (SR) (P)
 SPRYS TRUE BLUE Y033 (SR) (P)
DAM: THE GROVE G0734 (SR) (P)
 THE GROVE W566 (SR) (P)

SELECTION INDEX VALUES	
Market Target:	Index Value:
MSA-B2	+\$61

MEASUREMENTS
Scrotal Size
Weight
EMA
Rib Fat
Rump Fat
IMF

BUYER: \$:

JUNE 2017 PERFORMANCE HERDS AUSTRALIA BREEDPLAN EBVs																
	CED	CEM	GL	BW	200	400	600	MCW	MILK	SS	CWT	EMA	RIB	RUMP	RBY	IMF
EBV	-0.8		-1.3	+3.6	+29	+39	+49	+39	+9	+2.4	+32	+3.5	-0.2	-1.0	+0.0	+1.4
ACC	28%		36%	58%	69%	63%	68%	59%	42%	71%	58%	48%	56%	57%	54%	47%

58 THE GROVE L0714 (SR) (P)

Tattoo: L0714 DOB: 07/10/2015 Colour: Red Reg No: BDBL0714

THE GROVE TRAPPER E1272 (SR) (P)
SIRE: THE GROVE HUNTER H0428 (SR) (P)
 THE GROVE STARS E063 (SR) (P)
 WAUKARU GOLDMINE 2109 (SR) (P)
DAM: THE GROVE H0551 (SR) (P)
 THE GROVE E710 (SR) (P)

SELECTION INDEX VALUES	
Market Target:	Index Value:
MSA-B2	+\$61

MEASUREMENTS

Scrotal Size |
 Weight |
 EMA |
 Rib Fat |
 Rump Fat |
 IMF |

BUYER:

\$:

JUNE 2017 PERFORMANCE HERDS AUSTRALIA BREEDPLAN EBVs

	CED	CEM	GL	BW	200	400	600	MCW	MILK	SS	CWT	EMA	RIB	RUMP	RBV	IMF
EBV	-0.2		-2.6	+3.5	+34	+49	+71	+55	+11	+1.6	+49	+3.9	-1.8	-1.9	+2.4	-0.2
ACC	29%		42%	60%	69%	64%	68%	58%	41%	71%	57%	48%	56%	56%	53%	47%

59 THE GROVE L0720 (SR) (P)

Tattoo: L0720 DOB: 17/10/2015 Colour: Red Reg No: BDBL0720

THE GROVE TIDE-RIP E667 (SR) (P)
SIRE: THE GROVE TIDAL H1147 (SR) (P)
 THE GROVE E130 (SR) (P)
 WAUKARU GOLDMINE 2109 (SR) (P)
DAM: THE GROVE H0581 (SR) (P)
 THE GROVE E1171 (SR) (P)

SELECTION INDEX VALUES	
Market Target:	Index Value:
MSA-B2	+\$76

MEASUREMENTS

Scrotal Size |
 Weight |
 EMA |
 Rib Fat |
 Rump Fat |
 IMF |

BUYER:

\$:

JUNE 2017 PERFORMANCE HERDS AUSTRALIA BREEDPLAN EBVs

	CED	CEM	GL	BW	200	400	600	MCW	MILK	SS	CWT	EMA	RIB	RUMP	RBV	IMF
EBV	+1.8	+0.8	-2.1	+3.0	+33	+50	+65	+49	+9	+2.3	+52	+5.9	-0.8	-0.6	+2.3	+0.4
ACC	33%	28%	50%	63%	70%	65%	68%	57%	39%	71%	58%	49%	57%	57%	55%	48%

60 THE GROVE L0723 (SR) (P)

Tattoo: L0723 DOB: 10/10/2015 Colour: Red Reg No: BDBL0723

THE GROVE TRAPPER E1272 (SR) (P)
SIRE: THE GROVE HUNTER H0428 (SR) (P)
 THE GROVE STARS E063 (SR) (P)
 THE GROVE TALKBACK E282 (SR) (P)
DAM: THE GROVE H0527 (SR) (P)
 THE GROVE E738 (SR) (P)

SELECTION INDEX VALUES	
Market Target:	Index Value:
MSA-B2	+\$64

MEASUREMENTS

Scrotal Size |
 Weight |
 EMA |
 Rib Fat |
 Rump Fat |
 IMF |

BUYER:

\$:

JUNE 2017 PERFORMANCE HERDS AUSTRALIA BREEDPLAN EBVs

	CED	CEM	GL	BW	200	400	600	MCW	MILK	SS	CWT	EMA	RIB	RUMP	RBV	IMF
EBV	-2.4		-2.6	+4.6	+40	+55	+71	+70	+9	+2.3	+46	+4.9	+0.0	+0.0	+1.1	+0.5
ACC	28%		41%	59%	68%	63%	67%	56%	38%	71%	57%	47%	56%	56%	53%	47%

61 THE GROVE L0739 (SR) (P)

Tattoo: L0739 DOB: 23/09/2015 Colour: Red Reg No: BDBL0739

WEEBOLLABOLLA THEODORE T85 (SR) (P)
SIRE: THE GROVE J0598 (SR) (P)
 THE GROVE F526 (SR) (P)
 THE GROVE A254 (SR) (P)
DAM: THE GROVE E379 (SR) (P)
 THE GROVE W426 (SR) (P)

SELECTION INDEX VALUES	
Market Target:	Index Value:
MSA-B2	+\$55

MEASUREMENTS

Scrotal Size |
 Weight |
 EMA |
 Rib Fat |
 Rump Fat |
 IMF |

BUYER:

\$:

JUNE 2017 PERFORMANCE HERDS AUSTRALIA BREEDPLAN EBVs

	CED	CEM	GL	BW	200	400	600	MCW	MILK	SS	CWT	EMA	RIB	RUMP	RBV	IMF
EBV	+1.4	+1.1	-1.7	+2.0	+20	+38	+54	+63	+4	+0.9	+37	+4.0	-0.5	-0.9	+0.9	+0.3
ACC	33%	26%	48%	63%	71%	66%	70%	60%	43%	73%	60%	50%	58%	58%	55%	49%

62 THE GROVE L0743 (SR) (P)

Tattoo: L0743 DOB: 20/08/2015 Colour: Red Reg No: BDBL0743

WEEBOLLABOLLA THEODORE T85 (SR) (P)		SELECTION INDEX VALUES		MEASUREMENTS												
SIRE: THE GROVE J0598 (SR) (P)	THE GROVE F526 (SR) (P)	Market Target:	Index Value:	Scrotal Size												
THE GROVE OLYMPUS A116 (SR) (P)		MSA-B2	+\$61	Weight												
DAM: THE GROVE E606 (SR) (P)	THE GROVE Z963 (SR) (P)			EMA												
BUYER: \$:				Rib Fat												
				Rump Fat												
				IMF												
JUNE 2017 PERFORMANCE HERDS AUSTRALIA BREEDPLAN EBVs																
	CED	CEM	GL	BW	200	400	600	MCW	MILK	SS	CWT	EMA	RIB	RUMP	RBV	IMF
EBV	+1.2	+0.8	-1.5	+2.3	+22	+39	+58	+59	+6	+1.2	+44	+4.9	-1.2	-1.3	+2.1	+0.1
ACC	32%	25%	47%	62%	71%	66%	70%	60%	41%	72%	60%	50%	58%	58%	56%	49%

63 THE GROVE L0749 (SR) (P)

Tattoo: L0749 DOB: 24/08/2015 Colour: Red Reg No: BDBL0749

WEEBOLLABOLLA THEODORE T85 (SR) (P)		SELECTION INDEX VALUES		MEASUREMENTS												
SIRE: THE GROVE J0598 (SR) (P)	THE GROVE F526 (SR) (P)	Market Target:	Index Value:	Scrotal Size												
SPRYS BENCHMARK (SR) (P)		MSA-B2	+\$57	Weight												
DAM: THE GROVE E582 (SR) (P)	THE GROVE Y153 (SR) (P)			EMA												
BUYER: \$:				Rib Fat												
				Rump Fat												
				IMF												
JUNE 2017 PERFORMANCE HERDS AUSTRALIA BREEDPLAN EBVs																
	CED	CEM	GL	BW	200	400	600	MCW	MILK	SS	CWT	EMA	RIB	RUMP	RBV	IMF
EBV	+1.9	+1.2	-1.9	+1.9	+21	+40	+54	+42	+5	+1.5	+39	+3.3	-0.6	-0.7	+0.7	+0.4
ACC	32%	25%	47%	62%	71%	66%	70%	60%	44%	73%	60%	50%	58%	58%	55%	49%

64 THE GROVE L0768 (SR) (P)

Tattoo: L0768 DOB: 15/10/2015 Colour: Red Reg No: BDBL0768

THE GROVE BODACIOUS D425 (SR) (P)		SELECTION INDEX VALUES		MEASUREMENTS												
SIRE: THE GROVE G0377 (SR) (P)	THE GROVE A420 (SR) (P)	Market Target:	Index Value:	Scrotal Size												
THE GROVE KASPROWICZ W791 (SR) (P)		MSA-B2	+\$64	Weight												
DAM: THE GROVE JILLAROO G0408 (SR) (P)	THE GROVE JILLAROO D243 (SR) (P)			EMA												
BUYER: \$:				Rib Fat												
				Rump Fat												
				IMF												
JUNE 2017 PERFORMANCE HERDS AUSTRALIA BREEDPLAN EBVs																
	CED	CEM	GL	BW	200	400	600	MCW	MILK	SS	CWT	EMA	RIB	RUMP	RBV	IMF
EBV	-0.6	-0.7	-0.7	+3.9	+37	+58	+79	+89	+6	+1.9	+53	+3.5	-1.2	-2.0	+1.2	+0.2
ACC	35%	28%	53%	65%	71%	66%	70%	61%	44%	72%	60%	49%	56%	56%	54%	49%

65 THE GROVE L0946 (SR) (P)

Tattoo: L0946 DOB: 10/09/2015 Colour: Red Reg No: BDBL0946

THE GROVE TANDY E274 (SR) (P)		SELECTION INDEX VALUES		MEASUREMENTS												
SIRE: THE GROVE H0055 (SR) (P)	THE GROVE X517 (SR) (P)	Market Target:	Index Value:	Scrotal Size												
THE GROVE BOSS DROVER V13 (SR) (P)		MSA-B2	+\$63	Weight												
DAM: THE GROVE DAPHNE E622 (SR) (P)	THE GROVE DAPHNE X899 (SR) (P)			EMA												
BUYER: \$:				Rib Fat												
				Rump Fat												
				IMF												
JUNE 2017 PERFORMANCE HERDS AUSTRALIA BREEDPLAN EBVs																
	CED	CEM	GL	BW	200	400	600	MCW	MILK	SS	CWT	EMA	RIB	RUMP	RBV	IMF
EBV	+0.7	+1.0	-2.5	+2.6	+27	+37	+50	+50	+4	+1.3	+40	+5.5	-1.9	-3.0	+2.9	+0.4
ACC	32%	26%	49%	63%	71%	66%	70%	59%	44%	73%	60%	51%	59%	59%	57%	51%



LOT 1 **THE GROVE L0756 (SR) (P)**



LOT 4 **THE GROVE L1022 (SR) (P)**



LOT 5 **THE GROVE L0755 (SR) (P)**



LOT 6 **THE GROVE PLAYFORD L0533 (SR) (H)**



LOT 8 **THE GROVE L0764 (SR) (P)**



LOT 10 **THE GROVE L0460 (SR) (P)**



LOT 12 **THE GROVE L0384 (SR) (P)**



LOT 13 **THE GROVE L0796 (SR) (P)**



LOT 14 **THE GROVE L0396 (SR) (P)**



LOT 15 **THE GROVE BLOTCH L0250 (SR) (P)**



LOT 22 **THE GROVE L0402 (SR) (P)**



LOT 28 **THE GROVE L0208 (SR) (P)**



LOT 34 **THE GROVE L0449 (SR) (P)**



LOT 36 **THE GROVE L0476 1/4 SENEPOL (DR) (P)**



LOT 40 **THE GROVE L0570 (SR) (P)**



LOT 44 **THE GROVE L0584 (SR) (P)**



LOT 47 **THE GROVE BLOTCH L0689 (SR) (P)**



LOT 57 **THE GROVE L0527 (SR) (P)**



LOT 62 **THE GROVE L0743 (SR) (P)**



LOT 73 **THE GROVE L0268 (SR) (P)**



LOT 78 **THE GROVE L0411 (SR) (P)**



LOT 80 **THE GROVE L0419 (SR) (P)**



LOT 82 **THE GROVE L0482 (SR) (P)**



LOT 85 **THE GROVE L0518 (SR) (P)**

REFERENCE SIRES



WEBBOLLABOLLA GOODAR G105 (SR) (P) (AI)

MSA-B2 Index +\$71

Sire of Lots: • 7
• 83
• 84

JUNE 2017 PERFORMANCE HERDS AUSTRALIA BREEDPLAN EBVs

	CED	CEM	GL	BW	200	400	600	MCW	MILK	SS	CWT	EMA	RIB	RUMP	RBV	IMF
EBV	+2.3	+1.9	-3.6	+2.4	+25	+39	+57	+17	+15	+2.4	+35	+3.1	-1.0	-1.2	+1.7	+0.6
ACC	53%	38%	80%	90%	93%	88%	90%	76%	57%	82%	78%	63%	76%	76%	74%	71%

THE GROVE TIDE-RIP E667 (SR) (P)

MSA-B2 Index +\$55

Sire of Lots: • 23 • 107
• 88 • 108
• 89 • 109



JUNE 2017 PERFORMANCE HERDS AUSTRALIA BREEDPLAN EBVs

	CED	CEM	GL	BW	200	400	600	MCW	MILK	SS	CWT	EMA	RIB	RUMP	RBV	IMF
EBV	-5.9	+0.0	-1.4	+6.2	+41	+54	+70	+66	+6	+2.8	+43	+6.2	-0.9	-1.3	+2.3	+0.1
ACC	69%	67%	86%	94%	96%	93%	94%	89%	82%	93%	85%	75%	85%	84%	83%	80%



THE GROVE F516 (SR) (H)

MSA-B2 Index +\$90

Sire of Lots: • 26 • 40 • 43
• 38 • 41 • 44
• 39 • 42 • 69

JUNE 2017 PERFORMANCE HERDS AUSTRALIA BREEDPLAN EBVs

	CED	CEM	GL	BW	200	400	600	MCW	MILK	SS	CWT	EMA	RIB	RUMP	RBV	IMF
EBV	-5.5	-2.0	-0.3	+6.3	+44	+58	+89	+100	+9	+2.4	+59	+5.5	-0.6	-0.8	+1.3	+1.8
ACC	57%	52%	76%	88%	94%	88%	93%	78%	67%	89%	80%	70%	79%	79%	78%	75%



THE GROVE F915 (SR) (P)

MSA-B2 Index +\$82

Sire of Lots: • 19 • 53
 • 30
 • 51

JUNE 2017 PERFORMANCE HERDS AUSTRALIA BREEDPLAN EBVs

	CED	CEM	GL	BW	200	400	600	MCW	MILK	SS	CWT	EMA	RIB	RUMP	RBV	IMF
EBV	+3.4	+0.4	-3.8	+2.2	+43	+54	+71	+60	+0.0	+2.0	+52	+5.5	+0.1	-0.5	+0.9	+0.9
ACC	41%	34%	67%	84%	94%	89%	90%	78%	58%	89%	79%	66%	74%	74%	72%	71%

THE GROVE INFORMER F1131 (SR) (P) (ET)

MSA-B2 Index +\$66

Sire of Lots: • 13 • 93
 • 24
 • 48



JUNE 2017 PERFORMANCE HERDS AUSTRALIA BREEDPLAN EBVs

	CED	CEM	GL	BW	200	400	600	MCW	MILK	SS	CWT	EMA	RIB	RUMP	RBV	IMF
EBV	-1.3	-1.3	+0.1	+4.1	+30	+39	+63	+76	+6	+1.7	+43	+4.2	-1.0	-1.4	+1.0	+1.0
ACC	56%	54%	73%	84%	93%	86%	92%	78%	71%	86%	79%	69%	78%	78%	77%	75%



THE GROVE J0568 (DR) (P)

MSA-B2 Index +\$70

Sire of Lots: • 117 • 121 • 124
 • 118 • 122 • 125
 • 119 • 123 • 126
 • 120

JUNE 2017 PERFORMANCE HERDS AUSTRALIA BREEDPLAN EBVs

	CED	CEM	GL	BW	200	400	600	MCW	MILK	SS	CWT	EMA	RIB	RUMP	RBV	IMF
EBV			-1.8	+3.7	+37	+59	+67	+66	+5	+1.9	+52	+2.8	-0.1	+0.9	+0.3	+0.8
ACC			47%	71%	75%	69%	71%	60%	40%	66%	60%	44%	57%	56%	53%	48%



LOT 86 **THE GROVE L0531 (SR) (P)**



LOT 89 **THE GROVE KING-TIDE L0709 (SR) (P)**



LOT 91 **THE GROVE L0750 (SR) (P)**



LOT 92 **THE GROVE L0763 (SR) (P)**



LOT 93 **THE GROVE L0807 (SR) (P)**



LOT 95 **THE GROVE THUNDER M0034 (SR) (P) (AI)**



LOT 97 **THE GROVE UNITED M0038 (SR) (P) (AI)**



LOT 103 **THE GROVE ROOSEVELT M0071 (SR) (P) (AI)**



LOT 108 **THE GROVE L0695 1/4SEN 1/8BRA (DR) (P)**



LOT 109 **THE GROVE L0701 1/4SEN 1/8BRA (DR) (P)**



LOT 110 **THE GROVE L0868 1/2SEN1/4BRA (DR) (P)**



LOT 112 **THE GROVE L0884 1/2SEN1/4BRA (DR) (P)**



LOT 115 **THE GROVE L0918 1/4 SENEPOL (DR) (P)**



LOT 116 **THE GROVE L0290 1/2 ANGUS (DR) (P)**



LOT 117 **THE GROVE L0589 3/8 ANG 1/4 BRA (DR) (P)**



LOT 118 **THE GROVE L0627 3/8ANG1/4SEN1/ (DR) (P)**



LOT 119 **THE GROVE L0630 5/8 ANGUS (DR) (P)**



LOT 120 **THE GROVE L0632 3/8 ANG 1/4BRA (DR) (P)**



LOT 121 **THE GROVE L0633 5/8 ANGUS (DR) (P)**



LOT 122 **THE GROVE L0639 5/8 ANGUS (DR) (P)**



LOT 123 **THE GROVE L0645 3/8 ANG 1/4 BR (DR) (P)**



LOT 127 **THE GROVE M0047 3/4 ANGUS (DR) (P) (AI)**



LOT 133 **THE GROVE M0102 3/4 ANGUS (DR) (P) (AI)**



LOT 135 **THE GROVE M0108 3/4 ANGUS (DR) (P) (AI)**

66 THE GROVE L0956 (SR) (P)

Tattoo: L0956 DOB: 29/09/2015 Colour: Red Reg No: BDBL0956

THE GROVE TANDY E274 (SR) (P)
SIRE: THE GROVE H0055 (SR) (P)
 THE GROVE X517 (SR) (P)
 FUTURITY SPOTLIGHT Y042 (SR) (P)
DAM: THE GROVE E1148 (SR) (P)
 THE GROVE U442 (SR) (P)

SELECTION INDEX VALUES	
Market Target:	Index Value:
MSA-B2	+\$56

MEASUREMENTS	
Scrotal Size	
Weight	
EMA	
Rib Fat	
Rump Fat	
IMF	

BUYER: \$:

JUNE 2017 PERFORMANCE HERDS AUSTRALIA BREEDPLAN EBVs

	CED	CEM	GL	BW	200	400	600	MCW	MILK	SS	CWT	EMA	RIB	RUMP	RBY	IMF
EBV	+1.7		-3.1	+2.0	+26	+33	+41	+37	+5	+1.6	+31	+5.3	-0.2	-0.2	+1.9	+0.3
ACC	29%		47%	62%	71%	66%	70%	59%	43%	73%	60%	49%	58%	58%	55%	48%

67 THE GROVE L0963 (SR) (P)

Tattoo: L0963 DOB: 21/08/2015 Colour: Red Reg No: BDBL0963

THE GROVE TANDY E274 (SR) (P)
SIRE: THE GROVE H0055 (SR) (P)
 THE GROVE X517 (SR) (P)
 THE GROVE OSCAR A748 (SR) (P)
DAM: THE GROVE E776 (SR) (P)
 THE GROVE Z734 (SR) (P)

SELECTION INDEX VALUES	
Market Target:	Index Value:
MSA-B2	+\$69

MEASUREMENTS	
Scrotal Size	
Weight	
EMA	
Rib Fat	
Rump Fat	
IMF	

BUYER: \$:

JUNE 2017 PERFORMANCE HERDS AUSTRALIA BREEDPLAN EBVs

	CED	CEM	GL	BW	200	400	600	MCW	MILK	SS	CWT	EMA	RIB	RUMP	RBY	IMF
EBV	+0.1	+1.6	-3.1	+2.9	+30	+39	+52	+67	+5	+1.5	+38	+6.5	+0.4	+0.1	+1.6	+0.8
ACC	34%	29%	50%	64%	72%	67%	71%	62%	45%	73%	61%	51%	60%	60%	57%	52%

68 THE GROVE L0988 (SR)

Tattoo: L0988 DOB: 21/09/2015 Colour: Red Reg No: BDBL0988

THE GROVE BODACIOUS D425 (SR) (P)
SIRE: THE GROVE G0385 (SR) (P)
 THE GROVE A861 (SR) (P)
 THE GROVE LANCELOT X266 (SR) (P)
DAM: THE GROVE B819 (SR) (H)
 THE GROVE S924 (SR) (P)

SELECTION INDEX VALUES	
Market Target:	Index Value:
MSA-B2	+\$50

MEASUREMENTS	
Scrotal Size	
Weight	
EMA	
Rib Fat	
Rump Fat	
IMF	

BUYER: \$:

JUNE 2017 PERFORMANCE HERDS AUSTRALIA BREEDPLAN EBVs

	CED	CEM	GL	BW	200	400	600	MCW	MILK	SS	CWT	EMA	RIB	RUMP	RBY	IMF
EBV	-2.4		-1.6	+3.6	+31	+55	+66	+67	+6	+2.1	+44	+2.2	-0.2	-0.6	+0.1	+0.4
ACC	28%		45%	61%	72%	66%	71%	60%	46%	73%	60%	50%	59%	59%	56%	51%

69 THE GROVE L0993 (SR) (P)

Tattoo: L0993 DOB: 23/09/2015 Colour: White Reg No: BDBL0993

THE GROVE INFORMANT Y463 (SR) (P)
SIRE: THE GROVE F516 (SR) (H)
 THE GROVE RE DALE A003 (SR) (P)
 WAUKARU GOLDMINE 2109 (SR) (P)
DAM: THE GROVE B744 (SR) (P)
 THE GROVE Y446 (SR) (P)

SELECTION INDEX VALUES	
Market Target:	Index Value:
MSA-B2	+\$70

MEASUREMENTS	
Scrotal Size	
Weight	
EMA	
Rib Fat	
Rump Fat	
IMF	

BUYER: \$:

JUNE 2017 PERFORMANCE HERDS AUSTRALIA BREEDPLAN EBVs

	CED	CEM	GL	BW	200	400	600	MCW	MILK	SS	CWT	EMA	RIB	RUMP	RBY	IMF
EBV	-1.1	-0.6	-1.2	+4.0	+35	+46	+65	+64	+8	+1.3	+47	+3.1	-0.5	+0.0	+0.6	+1.3
ACC	33%	30%	49%	61%	71%	66%	71%	60%	49%	73%	61%	51%	59%	59%	57%	51%

70 THE GROVE L0200 (SR) (P)

Tattoo: L0200 DOB: 14/09/2015 Colour: Red Little White Reg No: BDBL0200

THE GROVE TIDE-RIP E667 (SR) (P)	SELECTION INDEX VALUES		MEASUREMENTS													
SIRE: THE GROVE J0588 (SR) (P)	Market Target:	Index Value:	Scrotal Size													
THE GROVE E719 (SR) (P)	MSA-B2 +\$52		Weight													
SPRYS ALL ROUNDER Z072 (SR) (P)			EMA													
DAM: THE GROVE C529 (SR) (P)			Rib Fat													
THE GROVE Y175 (SR) (P)			Rump Fat													
BUYER:	\$:		IMF													
JUNE 2017 PERFORMANCE HERDS AUSTRALIA BREEDPLAN EBVs																
	CED	CEM	GL	BW	200	400	600	MCW	MILK	SS	CWT	EMA	RIB	RUMP	RBV	IMF
EBV	+0.9		-1.6	+2.2	+27	+37	+47	+45	+5	+1.7	+34	+3.7	-0.4	-0.5	+0.3	+0.7
ACC	25%		39%	71%	71%	65%	70%	60%	45%	72%	59%	48%	55%	55%	52%	46%

71 THE GROVE L0212 (SR) (P)

Tattoo: L0212 DOB: 11/10/2015 Colour: Roan Reg No: BDBL0212

THE GROVE TIDE-RIP E667 (SR) (P)	SELECTION INDEX VALUES		MEASUREMENTS													
SIRE: THE GROVE J0588 (SR) (P)	Market Target:	Index Value:	Scrotal Size													
THE GROVE E719 (SR) (P)	MSA-B2 +\$39		Weight													
WAUKARU COPPERTOP 464 (SR) (P)			EMA													
DAM: THE GROVE C030 (SR) (P)			Rib Fat													
THE GROVE EVELYN Z997 (SR) (P)			Rump Fat													
BUYER:	\$:		IMF													
JUNE 2017 PERFORMANCE HERDS AUSTRALIA BREEDPLAN EBVs																
	CED	CEM	GL	BW	200	400	600	MCW	MILK	SS	CWT	EMA	RIB	RUMP	RBV	IMF
EBV	-0.6		-0.8	+3.3	+28	+37	+39	+24	+7	+2.0	+31	+3.4	-1.4	-1.3	+1.6	+0.0
ACC	25%		36%	59%	70%	65%	69%	59%	45%	71%	59%	48%	57%	57%	54%	48%

72 THE GROVE L0224 (SR) (P)

Tattoo: L0224 DOB: 06/09/2015 Colour: Roan Reg No: BDBL0224

THE GROVE TIDE-RIP E667 (SR) (P)	SELECTION INDEX VALUES		MEASUREMENTS													
SIRE: THE GROVE J0588 (SR) (P)	Market Target:	Index Value:	Scrotal Size													
THE GROVE E719 (SR) (P)	MSA-B2 +\$43		Weight													
THE GROVE LANCELOT X266 (SR) (P)			EMA													
DAM: THE GROVE C222 (SR) (P)			Rib Fat													
THE GROVE LUCINDA 25TH (SR) (P)			Rump Fat													
BUYER:	\$:		IMF													
JUNE 2017 PERFORMANCE HERDS AUSTRALIA BREEDPLAN EBVs																
	CED	CEM	GL	BW	200	400	600	MCW	MILK	SS	CWT	EMA	RIB	RUMP	RBV	IMF
EBV	-1.1	+0.3	-1.2	+3.2	+28	+36	+45	+45	+6	+1.7	+32	+3.8	+0.5	+0.7	+0.0	+0.5
ACC	27%	25%	35%	58%	71%	65%	69%	59%	45%	72%	59%	48%	55%	55%	53%	47%

73 THE GROVE L0268 (SR) (P)

Tattoo: L0268 DOB: 05/09/2015 Colour: Red Little White Reg No: BDBL0268

THE GROVE BODACIOUS D425 (SR) (P)	SELECTION INDEX VALUES		MEASUREMENTS													
SIRE: THE GROVE F915 (SR) (P)	Market Target:	Index Value:	Scrotal Size													
THE GROVE A252 (SR) (P)	MSA-B2 +\$63		Weight													
THE GROVE W092 (SR) (P)			EMA													
DAM: THE GROVE B635 (SR) (P)			Rib Fat													
THE GROVE W138 (SR) (P)			Rump Fat													
BUYER:	\$:		IMF													
JUNE 2017 PERFORMANCE HERDS AUSTRALIA BREEDPLAN EBVs																
	CED	CEM	GL	BW	200	400	600	MCW	MILK	SS	CWT	EMA	RIB	RUMP	RBV	IMF
EBV	+1.6		-2.6	+2.5	+31	+42	+56	+50	-1	+3.0	+40	+5.7	-0.8	-1.3	+1.5	+0.3
ACC	27%		39%	61%	72%	66%	70%	59%	47%	72%	61%	51%	58%	59%	56%	51%

74 THE GROVE PLAYFORD L0358 (SR) (H)

Tattoo: L0358 DOB: 19/10/2015 Colour: Red Little White Reg No: BDBL0358

YAMBURGAN MITTIEBAH 3RD (SR) (P)	SELECTION INDEX VALUES		MEASUREMENTS													
SIRE: TURANVILLE MITTIEBAH F114 (SR) (P)	Market Target:	Index Value:	Scrotal Size													
TURANVILLE RIDDLE C99 (SR) (P)			Weight													
THE GROVE LOCKYER X857 (SR) (P)	MSA-B2	+\$45	EMA													
DAM: THE GROVE LOCKY'S RE DALE D103 (SR) (P)			Rib Fat													
THE GROVE R.E. DALE W744 (SR) (P)			Rump Fat													
BUYER:	\$:		IMF													
JUNE 2017 PERFORMANCE HERDS AUSTRALIA BREEDPLAN EBVs																
	CED	CEM	GL	BW	200	400	600	MCW	MILK	SS	CWT	EMA	RIB	RUMP	RBY	IMF
EBV	-4.1	+0.4	-0.2	+4.9	+34	+46	+61	+57	+6	+3.1	+46	+6.1	-2.7	-3.9	+3.8	-0.7
ACC	37%	31%	47%	62%	71%	66%	70%	61%	47%	73%	60%	51%	59%	59%	56%	51%

75 THE GROVE L0366 (SR) (P)

Tattoo: L0366 DOB: 09/09/2015 Colour: Red Little White Reg No: BDBL0366

YAMBURGAN MITTIEBAH 3RD (SR) (P)	SELECTION INDEX VALUES		MEASUREMENTS													
SIRE: TURANVILLE MITTIEBAH F114 (SR) (P)	Market Target:	Index Value:	Scrotal Size													
TURANVILLE RIDDLE C99 (SR) (P)			Weight													
THE GROVE LEGEND A584 (SR) (P)	MSA-B2	+\$41	EMA													
DAM: THE GROVE D889 (SR) (P)			Rib Fat													
N98/00901 (SR)			Rump Fat													
BUYER:	\$:		IMF													
JUNE 2017 PERFORMANCE HERDS AUSTRALIA BREEDPLAN EBVs																
	CED	CEM	GL	BW	200	400	600	MCW	MILK	SS	CWT	EMA	RIB	RUMP	RBY	IMF
EBV	-3.2	+0.5	-0.3	+4.2	+35	+46	+50	+40	+6	+2.2	+43	+6.0	-0.8	-1.3	+2.3	-0.3
ACC	33%	27%	48%	61%	71%	65%	70%	60%	45%	72%	60%	49%	58%	58%	56%	49%

76 THE GROVE L0372 (SR) (P)

Tattoo: L0372 DOB: 19/09/2015 Colour: Red Reg No: BDBL0372

YAMBURGAN MITTIEBAH 3RD (SR) (P)	SELECTION INDEX VALUES		MEASUREMENTS													
SIRE: TURANVILLE MITTIEBAH F114 (SR) (P)	Market Target:	Index Value:	Scrotal Size													
TURANVILLE RIDDLE C99 (SR) (P)			Weight													
THE GROVE INFORMANT Y463 (SR) (P)	MSA-B2	+\$49	EMA													
DAM: THE GROVE D885 (SR) (P)			Rib Fat													
THE GROVE W395 (SR) (P)			Rump Fat													
BUYER:	\$:		IMF													
JUNE 2017 PERFORMANCE HERDS AUSTRALIA BREEDPLAN EBVs																
	CED	CEM	GL	BW	200	400	600	MCW	MILK	SS	CWT	EMA	RIB	RUMP	RBY	IMF
EBV	-4.0	+0.1	+0.1	+5.4	+40	+48	+64	+65	+6	+2.0	+46	+5.5	-0.7	-1.3	+1.9	+0.0
ACC	34%	29%	44%	61%	71%	65%	70%	60%	46%	72%	60%	49%	58%	58%	55%	49%

77 THE GROVE L0390 (SR) (H)

Tattoo: L0390 DOB: 12/09/2015 Colour: Roan Reg No: BDBL0390

SPRYS PATENTS ACE G38 (SR)	SELECTION INDEX VALUES		MEASUREMENTS													
SIRE: THE GROVE J0613 (SR) (P)	Market Target:	Index Value:	Scrotal Size													
THE GROVE F699 (SR) (P)			Weight													
DUNBEACON BIG BILL (SR) (P)	MSA-B2	+\$39	EMA													
DAM: THE GROVE DALE G0351 (SR) (P)			Rib Fat													
THE GROVE JRL DALE Z052 (SR) (H)			Rump Fat													
BUYER:	\$:		IMF													
JUNE 2017 PERFORMANCE HERDS AUSTRALIA BREEDPLAN EBVs																
	CED	CEM	GL	BW	200	400	600	MCW	MILK	SS	CWT	EMA	RIB	RUMP	RBY	IMF
EBV	-1.0		-1.4	+4.9	+40	+47	+51	+35	+7	+0.8	+38	+3.3	-2.2	-2.6	+2.3	-0.4
ACC	26%		35%	58%	70%	64%	69%	59%	38%	71%	58%	48%	57%	57%	54%	48%

78 THE GROVE L0411 (SR) (P)

Tattoo: L0411 DOB: 14/09/2015 Colour: Red Little White Reg No: BDBL0411

SPRYS PATENTS ACE G38 (SR)
SIRE: THE GROVE J0613 (SR) (P)
 THE GROVE F699 (SR) (P)

SPRYS TRUE BLUE Y033 (SR) (P)
DAM: THE GROVE G0161 (SR) (P)
 THE GROVE Y643 (SR) (P)

BUYER:

SELECTION INDEX VALUES

Market Target: Index Value:
 MSA-B2 +\$44

MEASUREMENTS

Scrotal Size |
 Weight |
 EMA |
 Rib Fat |
 Rump Fat |
 IMF |

JUNE 2017 PERFORMANCE HERDS AUSTRALIA BREEDPLAN EBVs

	CED	CEM	GL	BW	200	400	600	MCW	MILK	SS	CWT	EMA	RIB	RUMP	RBV	IMF
EBV	+0.1		-1.6	+3.4	+30	+34	+43	+33	+3	+1.3	+31	+3.7	-1.2	-1.8	+1.4	+0.2
ACC	26%		37%	58%	70%	64%	69%	58%	38%	70%	58%	48%	57%	57%	54%	47%

79 THE GROVE L0416 (SR)

Tattoo: L0416 DOB: 29/08/2015 Colour: Roan Reg No: BDBL0416

SPRYS PATENTS ACE G38 (SR)
SIRE: THE GROVE J0613 (SR) (P)
 THE GROVE F699 (SR) (P)

THE GROVE TANAMI E290 (SR) (P)
DAM: THE GROVE G0328 (SR) (P)
 THE GROVE C439 (SR) (SC)

BUYER:

SELECTION INDEX VALUES

Market Target: Index Value:
 MSA-B2 +\$60

MEASUREMENTS

Scrotal Size |
 Weight |
 EMA |
 Rib Fat |
 Rump Fat |
 IMF |

JUNE 2017 PERFORMANCE HERDS AUSTRALIA BREEDPLAN EBVs

	CED	CEM	GL	BW	200	400	600	MCW	MILK	SS	CWT	EMA	RIB	RUMP	RBV	IMF
EBV	-1.3		-0.9	+5.2	+38	+47	+63	+59	+4	+1.4	+41	+3.4	-0.7	-0.3	+0.9	+0.6
ACC	25%		34%	58%	70%	64%	69%	59%	36%	71%	58%	48%	57%	57%	54%	47%

80 THE GROVE L0419 (SR) (P)

Tattoo: L0419 DOB: 16/08/2015 Colour: White Reg No: BDBL0419

SPRYS PATENTS ACE G38 (SR)
SIRE: THE GROVE J0613 (SR) (P)
 THE GROVE F699 (SR) (P)

THE GROVE Z335 (SR) (P)
DAM: THE GROVE G0117 (SR) (P)
 THE GROVE B721 (SR) (P)

BUYER:

SELECTION INDEX VALUES

Market Target: Index Value:
 MSA-B2 +\$62

MEASUREMENTS

Scrotal Size |
 Weight |
 EMA |
 Rib Fat |
 Rump Fat |
 IMF |

JUNE 2017 PERFORMANCE HERDS AUSTRALIA BREEDPLAN EBVs

	CED	CEM	GL	BW	200	400	600	MCW	MILK	SS	CWT	EMA	RIB	RUMP	RBV	IMF
EBV			-1.5	+4.9	+38	+52	+73	+81	+3	+2.0	+48	+3.4	-2.5	-3.1	+2.4	-0.3
ACC			34%	58%	69%	64%	69%	58%	37%	70%	58%	48%	56%	56%	54%	48%

81 THE GROVE L0434 (SR) (P)

Tattoo: L0434 DOB: 16/09/2015 Colour: Roan Reg No: BDBL0434

THE GROVE F915 (SR) (P)
SIRE: THE GROVE J0572 (SR) (P)
 THE GROVE E1110 (SR) (P)

THE GROVE LOCKYER X857 (SR) (P)
DAM: THE GROVE D935 (SR) (P)
 THE GROVE X119 (SR) (P)

BUYER:

SELECTION INDEX VALUES

Market Target: Index Value:
 MSA-B2 +\$66

MEASUREMENTS

Scrotal Size |
 Weight |
 EMA |
 Rib Fat |
 Rump Fat |
 IMF |

JUNE 2017 PERFORMANCE HERDS AUSTRALIA BREEDPLAN EBVs

	CED	CEM	GL	BW	200	400	600	MCW	MILK	SS	CWT	EMA	RIB	RUMP	RBV	IMF
EBV	-0.8		-1.0	+3.7	+28	+38	+53	+64	+5	+1.5	+36	+5.4	+0.0	-0.2	+0.9	+1.2
ACC	25%		40%	57%	70%	64%	69%	59%	42%	71%	59%	49%	58%	58%	55%	49%

82 THE GROVE L0482 (SR) (P)

Tattoo: L0482 DOB: 10/10/2015 Colour: Roan Reg No: BDBL0482

SPRYS PATENTS ACE G38 (SR)

SIRE: THE GROVE J0606 (SR) (P)

THE GROVE F532 (SR) (P)

WOOLCOTT A486 (SR) (P)

DAM: THE GROVE F655 (SR) (P)

THE GROVE DAPHNE Y621 (SR) (P)

BUYER:

\$:

SELECTION INDEX VALUES

Market Target: Index Value:
MSA-B2 +\$40

MEASUREMENTS

Scrotal Size |

Weight |

EMA |

Rib Fat |

Rump Fat |

IMF |

JUNE 2017 PERFORMANCE HERDS AUSTRALIA BREEDPLAN EBVs

	CED	CEM	GL	BW	200	400	600	MCW	MILK	SS	CWT	EMA	RIB	RUMP	RBY	IMF
EBV			-2.5	+0.9	+23	+30	+29	+22	+5	+1.2	+28	+3.8	+0.0	+0.0	+0.4	+0.5
ACC			32%	58%	70%	64%	68%	58%	39%	71%	57%	46%	52%	52%	51%	43%

83 THE GROVE L0499 (SR) (H)

Tattoo: L0499 DOB: 05/09/2015 Colour: Red Little White Reg No: BDBL0499

BUNDALEER UNITED CHIEF U21 (SR) (P)

SIRE: WEEBOLLABOLLA GOODAR G105 (SR) (P)

WEEBOLLABOLLA E25 (SR) (P)

THE GROVE KOOKABURRA W735 (SR) (P)

DAM: THE GROVE E1210 (SR)

THE GROVE C011 (SR) (P)

BUYER:

\$:

SELECTION INDEX VALUES

Market Target: Index Value:
MSA-B2 +\$51

MEASUREMENTS

Scrotal Size |

Weight |

EMA |

Rib Fat |

Rump Fat |

IMF |

JUNE 2017 PERFORMANCE HERDS AUSTRALIA BREEDPLAN EBVs

	CED	CEM	GL	BW	200	400	600	MCW	MILK	SS	CWT	EMA	RIB	RUMP	RBY	IMF
EBV	+1.0	+1.6	-3.0	+1.9	+22	+26	+36	+10	+14	+1.4	+23	+4.2	-0.1	-0.3	+1.0	+0.7
ACC	34%	28%	51%	61%	70%	65%	69%	60%	43%	71%	59%	49%	57%	57%	54%	48%

84 THE GROVE L0511 (SR) (P)

Tattoo: L0511 DOB: 19/09/2015 Colour: Roan Reg No: BDBL0511

BUNDALEER UNITED CHIEF U21 (SR) (P)

SIRE: WEEBOLLABOLLA GOODAR G105 (SR) (P)

WEEBOLLABOLLA E25 (SR) (P)

INGLETON BONZA B075 (SR) (P)

DAM: THE GROVE E173 (SR) (P)

THE GROVE B040 (SR) (P)

BUYER:

\$:

SELECTION INDEX VALUES

Market Target: Index Value:
MSA-B2 +\$39

MEASUREMENTS

Scrotal Size |

Weight |

EMA |

Rib Fat |

Rump Fat |

IMF |

JUNE 2017 PERFORMANCE HERDS AUSTRALIA BREEDPLAN EBVs

	CED	CEM	GL	BW	200	400	600	MCW	MILK	SS	CWT	EMA	RIB	RUMP	RBY	IMF
EBV	+0.1		-1.0	+3.2	+23	+29	+40	+30	+10	+1.2	+23	+1.0	-0.1	-0.1	+0.0	+0.5
ACC	30%		50%	73%	72%	65%	70%	58%	42%	71%	58%	46%	56%	56%	53%	47%

85 THE GROVE L0518 (SR) (P)

Tattoo: L0518 DOB: 29/07/2015 Colour: Roan Reg No: BDBL0518

YAMBURGAN MITTIEBAH 3RD (SR) (P)

SIRE: TURANVILLE MITTIEBAH H132 (SR) (P)

TURANVILLE E130 (SR) (P)

THE GROVE OSCAR A748 (SR) (P)

DAM: THE GROVE G0707 (SR) (P)

THE GROVE B858 (SR) (P)

BUYER:

\$:

SELECTION INDEX VALUES

Market Target: Index Value:
MSA-B2 +\$59

MEASUREMENTS

Scrotal Size |

Weight |

EMA |

Rib Fat |

Rump Fat |

IMF |

JUNE 2017 PERFORMANCE HERDS AUSTRALIA BREEDPLAN EBVs

	CED	CEM	GL	BW	200	400	600	MCW	MILK	SS	CWT	EMA	RIB	RUMP	RBY	IMF
EBV	-1.9	-0.4	-1.4	+4.1	+32	+49	+59	+66	+7	+2.2	+43	+6.1	-0.5	-1.2	+1.7	+0.5
ACC	33%	29%	42%	60%	69%	64%	69%	60%	43%	71%	59%	49%	57%	57%	55%	48%

86 THE GROVE L0531 (SR) (P)

Tattoo: L0531 DOB: 12/08/2015 Colour: Roan Reg No: BDBL0531

YAMBURGAN MITTIEBAH 3RD (SR) (P)
SIRE: TURANVILLE MITTIEBAH H132 (SR) (P)
 TURANVILLE E130 (SR) (P)
 THE GROVE E1130 (SR) (P)
DAM: THE GROVE G0545 (SR) (P)
 THE GROVE B085 (SR) (P)

SELECTION INDEX VALUES	
Market Target:	Index Value:
MSA-B2	+\$67

MEASUREMENTS

Scrotal Size |
 Weight |
 EMA |
 Rib Fat |
 Rump Fat |
 IMF |

BUYER:

\$:

JUNE 2017 PERFORMANCE HERDS AUSTRALIA BREEDPLAN EBVs

	CED	CEM	GL	BW	200	400	600	MCW	MILK	SS	CWT	EMA	RIB	RUMP	RBV	IMF
EBV	-1.4		-0.2	+4.5	+33	+46	+55	+57	+3	+1.8	+40	+4.5	-0.1	-0.5	+0.4	+1.4
ACC	26%		37%	58%	69%	63%	68%	59%	41%	71%	58%	47%	56%	56%	53%	47%

87 THE GROVE L0586 (SR) (P)

Tattoo: L0586 DOB: 20/08/2015 Colour: Roan Reg No: BDBL0586

THE GROVE SANTIAGO D170 (SR) (P)
SIRE: WOOLCOTT H149 (SR) (H)
 WOOLCOTT C214 (SR) (P)
 NARRALDA BUSHRANGER B114 (SR) (P)
DAM: THE GROVE F507 (SR) (P)
 THE GROVE B797 (SR) (P)

SELECTION INDEX VALUES	
Market Target:	Index Value:
MSA-B2	+\$65

MEASUREMENTS

Scrotal Size |
 Weight |
 EMA |
 Rib Fat |
 Rump Fat |
 IMF |

BUYER:

\$:

JUNE 2017 PERFORMANCE HERDS AUSTRALIA BREEDPLAN EBVs

	CED	CEM	GL	BW	200	400	600	MCW	MILK	SS	CWT	EMA	RIB	RUMP	RBV	IMF
EBV	+0.3		-1.8	+2.9	+26	+38	+53	+51	+7	+1.2	+40	+5.8	-1.0	-1.5	+2.1	+0.6
ACC	26%		33%	58%	70%	64%	69%	60%	40%	71%	58%	47%	55%	55%	52%	46%

88 THE GROVE L0706 (SR) (P)

Tattoo: L0706 DOB: 02/10/2015 Colour: Red Little White Reg No: BDBL0706

THE GROVE OSCAR A748 (SR) (P)
SIRE: THE GROVE TIDE-RIP E667 (SR) (P)
 THE GROVE RAMONA Z445 (SR) (P)
 THE GROVE TRAPPER E1272 (SR) (P)
DAM: THE GROVE H0554 (SR) (P)
 THE GROVE E1103 (SR) (P)

SELECTION INDEX VALUES	
Market Target:	Index Value:
MSA-B2	+\$71

MEASUREMENTS

Scrotal Size |
 Weight |
 EMA |
 Rib Fat |
 Rump Fat |
 IMF |

BUYER:

\$:

JUNE 2017 PERFORMANCE HERDS AUSTRALIA BREEDPLAN EBVs

	CED	CEM	GL	BW	200	400	600	MCW	MILK	SS	CWT	EMA	RIB	RUMP	RBV	IMF
EBV	-3.2	-0.2	-1.8	+5.9	+45	+60	+83	+80	+11	+1.9	+51	+5.4	-1.3	-1.8	+2.1	+0.3
ACC	41%	39%	51%	66%	72%	68%	71%	64%	51%	74%	62%	54%	61%	61%	59%	54%

89 THE GROVE KING-TIDE L0709 (SR) (P)

Tattoo: L0709 DOB: 20/10/2015 Colour: Red Little White Reg No: BDBL0709

THE GROVE OSCAR A748 (SR) (P)
SIRE: THE GROVE TIDE-RIP E667 (SR) (P)
 THE GROVE RAMONA Z445 (SR) (P)
 THE GROVE REGENT D817 (SR) (P)
DAM: THE GROVE STORIE F272 (SR) (P)
 BDB07C553 (SR)

SELECTION INDEX VALUES	
Market Target:	Index Value:
MSA-B2	+\$48

MEASUREMENTS

Scrotal Size |
 Weight |
 EMA |
 Rib Fat |
 Rump Fat |
 IMF |

BUYER:

\$:

JUNE 2017 PERFORMANCE HERDS AUSTRALIA BREEDPLAN EBVs

	CED	CEM	GL	BW	200	400	600	MCW	MILK	SS	CWT	EMA	RIB	RUMP	RBV	IMF
EBV	-3.1	+0.4	-1.4	+5.5	+38	+46	+59	+56	+6	+1.1	+39	+4.1	-1.4	-2.2	+2.0	+0.1
ACC	38%	36%	51%	63%	71%	66%	69%	60%	50%	72%	60%	51%	57%	57%	55%	50%

90 THE GROVE L0747 (SR) (P)

Tattoo: L0747 DOB: 01/09/2015 Colour: Roan Reg No: BDBL0747

WEEBOLLABOLLA THEODORE T85 (SR) (P)
SIRE: THE GROVE J0598 (SR) (P)
 THE GROVE F526 (SR) (P)
 SPRYS BENCHMARK (SR) (P)
DAM: THE GROVE LADY E592 (SR) (P)
 THE GROVE FIRST LADY X071 (SR) (P)

SELECTION INDEX VALUES	
Market Target:	Index Value:
MSA-B2	+\$69

MEASUREMENTS	
Scrotal Size	
Weight	
EMA	
Rib Fat	
Rump Fat	
IMF	

BUYER:

\$:

JUNE 2017 PERFORMANCE HERDS AUSTRALIA BREEDPLAN EBVs

	CED	CEM	GL	BW	200	400	600	MCW	MILK	SS	CWT	EMA	RIB	RUMP	RBY	IMF
EBV	+1.6	+0.6	-1.7	+2.6	+24	+50	+68	+73	+5	+1.4	+50	+4.5	-1.2	-1.5	+1.6	+0.3
ACC	32%	25%	47%	62%	71%	66%	70%	60%	43%	72%	60%	50%	58%	58%	56%	50%

91 THE GROVE L0750 (SR) (P)

Tattoo: L0750 DOB: 06/08/2015 Colour: White Reg No: BDBL0750

WEEBOLLABOLLA THEODORE T85 (SR) (P)
SIRE: THE GROVE J0598 (SR) (P)
 THE GROVE F526 (SR) (P)
 THE GROVE OPTIMUM A188 (SR) (P)
DAM: THE GROVE E929 (SR) (P)
 THE GROVE W481 (SR) (P)

SELECTION INDEX VALUES	
Market Target:	Index Value:
MSA-B2	+\$62

MEASUREMENTS	
Scrotal Size	
Weight	
EMA	
Rib Fat	
Rump Fat	
IMF	

BUYER:

\$:

JUNE 2017 PERFORMANCE HERDS AUSTRALIA BREEDPLAN EBVs

	CED	CEM	GL	BW	200	400	600	MCW	MILK	SS	CWT	EMA	RIB	RUMP	RBY	IMF
EBV	+1.3	+0.9	-2.0	+2.7	+26	+44	+64	+71	+4	+0.8	+43	+4.7	-0.9	-1.5	+1.7	+0.1
ACC	33%	26%	48%	63%	71%	67%	70%	60%	44%	73%	61%	51%	58%	58%	56%	50%

92 THE GROVE L0763 (SR) (P)

Tattoo: L0763 DOB: 19/08/2015 Colour: White Reg No: BDBL0763

WEEBOLLABOLLA THEODORE T85 (SR) (P)
SIRE: THE GROVE J0598 (SR) (P)
 THE GROVE F526 (SR) (P)
 EVELO ZIGGY Z36 (SR) (P)
DAM: THE GROVE E970 (SR) (P)
 THE GROVE X870 (SR) (P)

SELECTION INDEX VALUES	
Market Target:	Index Value:
MSA-B2	+\$50

MEASUREMENTS	
Scrotal Size	
Weight	
EMA	
Rib Fat	
Rump Fat	
IMF	

BUYER:

\$:

JUNE 2017 PERFORMANCE HERDS AUSTRALIA BREEDPLAN EBVs

	CED	CEM	GL	BW	200	400	600	MCW	MILK	SS	CWT	EMA	RIB	RUMP	RBY	IMF
EBV	+1.4	+1.4	-1.8	+1.5	+16	+33	+47	+52	+5	+1.5	+38	+4.7	-1.2	-1.6	+1.8	+0.0
ACC	33%	26%	49%	63%	71%	66%	70%	60%	44%	73%	61%	51%	59%	59%	56%	50%

93 THE GROVE L0807 (SR) (P)

Tattoo: L0807 DOB: 07/09/2015 Colour: Roan Reg No: BDBL0807

THE GROVE INFORMANT Y463 (SR) (P)
SIRE: THE GROVE INFORMER F1131 (SR) (P)
 THE GROVE R.E. DALE W744 (SR) (P)
 THE GROVE LOCKYER X857 (SR) (P)
DAM: THE GROVE B868 (SR) (P)
 N96X01551 (SR)

SELECTION INDEX VALUES	
Market Target:	Index Value:
MSA-B2	+\$47

MEASUREMENTS	
Scrotal Size	
Weight	
EMA	
Rib Fat	
Rump Fat	
IMF	

BUYER:

\$:

JUNE 2017 PERFORMANCE HERDS AUSTRALIA BREEDPLAN EBVs

	CED	CEM	GL	BW	200	400	600	MCW	MILK	SS	CWT	EMA	RIB	RUMP	RBY	IMF
EBV	-1.6	-0.1	-0.6	+4.3	+28	+35	+52	+60	+6	+0.9	+34	+4.2	-1.6	-2.1	+2.0	+0.1
ACC	35%	33%	48%	61%	72%	66%	71%	61%	52%	72%	61%	51%	59%	59%	57%	52%

94 THE GROVE L0951 (SR) (P)

Tattoo: L0951 DOB: 02/08/2015 Colour: Red Reg No: BDBL0951

<p>THE GROVE TANDY E274 (SR) (P)</p> <p>SIRE: THE GROVE H0055 (SR) (P) THE GROVE X517 (SR) (P)</p> <p>SPRYS LEGEND Z096 (SR) (P)</p> <p>DAM: THE GROVE E1081 (SR) (P) THE GROVE MB601 (SR) (P)</p> <p>BUYER: _____ \$: _____</p>	<p>SELECTION INDEX VALUES</p> <p>Market Target: Index Value:</p> <p>MSA-B2 +\$51</p>	<p>MEASUREMENTS</p> <p>Scrotal Size _____</p> <p>Weight _____</p> <p>EMA _____</p> <p>Rib Fat _____</p> <p>Rump Fat _____</p> <p>IMF _____</p>
--	---	---

JUNE 2017 PERFORMANCE HERDS AUSTRALIA BREEDPLAN EBVs																
	CED	CEM	GL	BW	200	400	600	MCW	MILK	SS	CWT	EMA	RIB	RUMP	RBV	IMF
EBV	+0.9		-2.2	+1.5	+22	+32	+36	+18	+5	+2.0	+34	+5.9	+0.3	-0.1	+1.4	+0.5
ACC	28%		46%	62%	71%	65%	70%	59%	43%	71%	60%	49%	58%	58%	55%	50%



Di & Dave Elder and Godfrey inspecting the first calf heifers and their calves at Goondiwindi. The heifers are joined for 2 cycles only – all in calf bar one! Top: Cows with new season calves at foot, handling winter and a relatively dry season with ease.

The Grove.

Australia's Premier Performance Shorthorn Herd

Lots 95–104 **SPECIALLY SELECTED PERFORMANCE RECORDED YEARLING SHORTHORN BULLS**

Autumn born, all from first calf heifers, all born unassisted.

95 THE GROVE THUNDER M0034 (SR) (P) (AI)

Tattoo: M0034 DOB: 10/03/2016 Colour: Red Reg No: BDBM0034

WEEBOLLABOLLA THEODORE T85 (SR) (P)
SIRE: BROUGHTON PARK THUNDER C023 (SR) (P)
 BROUGHTON PARK ROSE A011 (SR)
 THE GROVE VELOCITY G0477 (SR) (P)
DAM: THE GROVE J0158 (SR) (P)
 THE GROVE B974 (SR) (P)

SELECTION INDEX VALUES	
Market Target:	Index Value:
MSA-B2	+\$60

MEASUREMENTS	
Scrotal Size	
Weight	
EMA	
Rib Fat	
Rump Fat	
IMF	

BUYER:

\$:

JUNE 2017 PERFORMANCE HERDS AUSTRALIA BREEDPLAN EBVs

	CED	CEM	GL	BW	200	400	600	MCW	MILK	SS	CWT	EMA	RIB	RUMP	RBY	IMF
EBV	+0.5	+0.1	+0.7	+2.4	+21	+35	+47	+43	+9	+1.4	+41	+5.8	+1.0	+1.6	+0.5	+0.9
ACC	38%	31%	62%	73%	73%	70%	67%	56%	50%	72%	60%	50%	57%	57%	55%	52%

96 THE GROVE UNITED M0035 (SR) (P) (AI)

Tattoo: M0035 DOB: 24/03/2016 Colour: Red Reg No: BDBM0035

BUNDALEER UNITED CHIEF U21 (SR) (P)
SIRE: THE GROVE K0066 (SR) (P)
 THE GROVE G0707 (SR) (P)
 FUTURITY EU-BULL (SR)
DAM: THE GROVE J0283 (SR) (P)
 THE GROVE A921 (SR) (P)

SELECTION INDEX VALUES	
Market Target:	Index Value:
MSA-B2	+\$48

MEASUREMENTS	
Scrotal Size	
Weight	
EMA	
Rib Fat	
Rump Fat	
IMF	

BUYER:

\$:

JUNE 2017 PERFORMANCE HERDS AUSTRALIA BREEDPLAN EBVs

	CED	CEM	GL	BW	200	400	600	MCW	MILK	SS	CWT	EMA	RIB	RUMP	RBY	IMF
EBV	-0.8		-1.0	+3.1	+25	+38	+51	+45	+9	+1.3	+38	+4.4	-1.6	-2.1	+2.3	-0.1
ACC	30%		59%	72%	71%	68%	64%	51%	37%	71%	56%	46%	53%	53%	52%	45%

97 THE GROVE UNITED M0038 (SR) (P) (AI)

Tattoo: M0038 DOB: 26/03/2016 Colour: Red Reg No: BDBM0038

BUNDALEER UNITED CHIEF U21 (SR) (P)
SIRE: THE GROVE K0066 (SR) (P)
 THE GROVE G0707 (SR) (P)
 THE GROVE INFORMER F1131 (SR) (P)
DAM: THE GROVE EVELYN J0118 (SR) (P)
 THE GROVE EVELYN B825 (SR) (P)

SELECTION INDEX VALUES	
Market Target:	Index Value:
MSA-B2	+\$46

MEASUREMENTS	
Scrotal Size	
Weight	
EMA	
Rib Fat	
Rump Fat	
IMF	

BUYER:

\$:

JUNE 2017 PERFORMANCE HERDS AUSTRALIA BREEDPLAN EBVs

	CED	CEM	GL	BW	200	400	600	MCW	MILK	SS	CWT	EMA	RIB	RUMP	RBY	IMF
EBV	-0.6	+0.6	-0.4	+2.8	+22	+24	+41	+41	+7	+0.9	+28	+3.9	-1.0	-1.4	+1.4	+0.5
ACC	31%	25%	61%	72%	72%	68%	65%	52%	39%	71%	57%	47%	54%	54%	53%	46%

98 THE GROVE HIGH-TIDE M0042 (SR) (P) (AI)

Tattoo: M0042 DOB: 24/03/2016 Colour: Red Reg No: BDBM0042

THE GROVE TIDE-RIP E667 (SR) (P)
SIRE: THE GROVE TIDAL H1147 (SR) (P)
 THE GROVE E130 (SR) (P)
 THE GROVE F915 (SR) (P)
DAM: THE GROVE J0469 (SR) (P)
 THE GROVE E722 (SR) (P)

SELECTION INDEX VALUES	
Market Target:	Index Value:
MSA-B2	+\$75

MEASUREMENTS	
Scrotal Size	
Weight	
EMA	
Rib Fat	
Rump Fat	
IMF	

BUYER: \$:

JUNE 2017 PERFORMANCE HERDS AUSTRALIA BREEDPLAN EBVs

	CED	CEM	GL	BW	200	400	600	MCW	MILK	SS	CWT	EMA	RIB	RUMP	RBY	IMF
EBV	+2.1	+1.1	-2.1	+2.7	+37	+49	+63	+61	+7	+2.5	+48	+4.8	-0.8	-1.3	+1.4	+0.7
ACC	31%	25%	59%	72%	72%	69%	66%	53%	36%	71%	58%	48%	56%	56%	54%	48%

99 THE GROVE COMMANDER M0045 (SR) (P) (AI)

Tattoo: M0045 DOB: 22/03/2016 Colour: Red Reg No: BDBM0045

THE GROVE KOOKABURRA W735 (SR) (P)
SIRE: YAMBURGAN GENERAL H188 (SR)
 YAMBURGAN CONNIE F169 (SR)
 THE GROVE TITANIC E815 (SR) (P)
DAM: THE GROVE J0992 (SR) (P)
 THE GROVE B634 (SR) (P)

SELECTION INDEX VALUES	
Market Target:	Index Value:
MSA-B2	+\$36

MEASUREMENTS	
Scrotal Size	
Weight	
EMA	
Rib Fat	
Rump Fat	
IMF	

BUYER: \$:

JUNE 2017 PERFORMANCE HERDS AUSTRALIA BREEDPLAN EBVs

	CED	CEM	GL	BW	200	400	600	MCW	MILK	SS	CWT	EMA	RIB	RUMP	RBY	IMF
EBV	-1.2		-1.1	+3.2	+25	+20	+32	+33	+9	-0.6	+18	+2.4	-0.5	-0.6	+0.1	+0.9
ACC	29%		59%	71%	71%	67%	63%	48%	36%	69%	54%	44%	51%	50%	49%	43%

100 THE GROVE HIGH-TIDE M0046 (SR) (P) (AI)

Tattoo: M0046 DOB: 18/03/2016 Colour: Red Reg No: BDBM0046

THE GROVE TIDE-RIP E667 (SR) (P)
SIRE: THE GROVE TIDAL H1147 (SR) (P)
 THE GROVE E130 (SR) (P)
 THE GROVE INFORMANT Y463 (SR) (P)
DAM: THE GROVE Y463 DALE J0820 (SR) (P)
 THE GROVE KOOKAS DALE E1221 (SR) (P)

SELECTION INDEX VALUES	
Market Target:	Index Value:
MSA-B2	+\$65

MEASUREMENTS	
Scrotal Size	
Weight	
EMA	
Rib Fat	
Rump Fat	
IMF	

BUYER: \$:

JUNE 2017 PERFORMANCE HERDS AUSTRALIA BREEDPLAN EBVs

	CED	CEM	GL	BW	200	400	600	MCW	MILK	SS	CWT	EMA	RIB	RUMP	RBY	IMF
EBV	+1.0	+0.6	-1.7	+2.5	+26	+32	+50	+56	+8	+1.9	+33	+4.4	+0.8	+1.0	+0.0	+1.2
ACC	37%	32%	61%	73%	73%	70%	67%	54%	42%	72%	59%	50%	57%	57%	56%	50%

101 THE GROVE M0062 1/4 SENEPOL (DR) (P) (AI)

Tattoo: M0062 DOB: 01/03/2016 Colour: Red Reg No: BDBM0062

THE GROVE KOOKABURRA W735 (SR) (P)
SIRE: YAMBURGAN GENERAL H188 (SR)
 YAMBURGAN CONNIE F169 (SR)
 SE FIVE STAR 080914 (DR) (P)
DAM: THE GROVE J0114 (DR) (P)
 THE GROVE Z729 (SR) (P)

SELECTION INDEX VALUES	
Market Target:	Index Value:
MSA-B2	+\$39

MEASUREMENTS	
Scrotal Size	
Weight	
EMA	
Rib Fat	
Rump Fat	
IMF	

BUYER: \$:

JUNE 2017 PERFORMANCE HERDS AUSTRALIA BREEDPLAN EBVs

	CED	CEM	GL	BW	200	400	600	MCW	MILK	SS	CWT	EMA	RIB	RUMP	RBY	IMF
EBV	+2.1		-1.6	+0.6	+16	+20	+23	+17	+5	+0.8	+21	+3.7	+0.0	+0.2	+0.3	+0.7
ACC	29%		56%	69%	68%	64%	60%	46%	34%	66%	52%	42%	48%	48%	47%	41%

102 THE GROVE U.N. M0067 (SR) (P) (AI)

Tattoo: M0067 DOB: 03/03/2016 Colour: Red Little White Reg No: BDBM0067

BUNDALEER UNITED CHIEF U21 (SR) (P)
SIRE: ARUBIAL J012 (SR)
 ARUBIAL G077 (SR) (P)
 THE GROVE INFORMER F1131 (SR) (P)
DAM: THE GROVE J0958 (SR) (P)
 THE GROVE F162 (SR) (P)

SELECTION INDEX VALUES	
Market Target:	Index Value:
MSA-B2	+\$46

MEASUREMENTS	
Scrotal Size	
Weight	
EMA	
Rib Fat	
Rump Fat	
IMF	

BUYER: \$:

JUNE 2017 PERFORMANCE HERDS AUSTRALIA BREEDPLAN EBVs

	CED	CEM	GL	BW	200	400	600	MCW	MILK	SS	CWT	EMA	RIB	RUMP	RBY	IMF
EBV	-0.2		-0.4	+2.1	+23	+31	+43	+35	+9	+0.4	+36	+3.3	-0.7	-0.9	+1.1	+0.5
ACC	32%		61%	72%	72%	69%	65%	51%	36%	70%	56%	46%	53%	53%	52%	45%

103 THE GROVE ROOSEVELT M0071 (SR) (P) (AI)

Tattoo: M0071 DOB: 24/02/2016 Colour: Red Reg No: BDBM0071

WEEBOLLABOLLA QUILPIE Q18 (SR) (P)
SIRE: WEEBOLLABOLLA THEODORE T85 (SR) (P)
 WEEBOLLABOLLA NINDETHANA (SR) (P)
 THE GROVE TIDE-RIP E667 (SR) (P)
DAM: THE GROVE ROSE J0553 (SR) (P)
 THE GROVE ROSE E673 (SR) (P)

SELECTION INDEX VALUES	
Market Target:	Index Value:
MSA-B2	+\$50

MEASUREMENTS	
Scrotal Size	
Weight	
EMA	
Rib Fat	
Rump Fat	
IMF	

BUYER: \$:

JUNE 2017 PERFORMANCE HERDS AUSTRALIA BREEDPLAN EBVs

	CED	CEM	GL	BW	200	400	600	MCW	MILK	SS	CWT	EMA	RIB	RUMP	RBY	IMF
EBV	+1.5	+1.0	-2.8	+2.3	+28	+37	+45	+41	+7	+1.7	+34	+5.1	-0.4	-1.1	+1.6	+0.0
ACC	46%	41%	64%	74%	73%	71%	68%	60%	54%	73%	62%	55%	60%	60%	59%	55%

104 THE GROVE SPY M0076 (SR) (P) (AI)

Tattoo: M0076 DOB: 04/03/2016 Colour: Roan Reg No: BDBM0076

THE GROVE INFORMANT U255 (SR) (P)
SIRE: THE GROVE INFORMANT Y463 (SR) (P)
 THE GROVE LUCINDA 25TH (SR) (P)
 WEEBOLLABOLLA THEODORE T85 (SR) (P)
DAM: THE GROVE J0502 (SR) (P)
 THE GROVE F655 (SR) (P)

SELECTION INDEX VALUES	
Market Target:	Index Value:
MSA-B2	+\$68

MEASUREMENTS	
Scrotal Size	
Weight	
EMA	
Rib Fat	
Rump Fat	
IMF	

BUYER: \$:

JUNE 2017 PERFORMANCE HERDS AUSTRALIA BREEDPLAN EBVs

	CED	CEM	GL	BW	200	400	600	MCW	MILK	SS	CWT	EMA	RIB	RUMP	RBY	IMF
EBV	+1.2	+0.0	-1.5	+2.8	+28	+43	+55	+57	+7	+1.9	+43	+5.3	+0.2	+0.1	+0.9	+0.9
ACC	44%	42%	63%	74%	73%	71%	68%	61%	56%	74%	63%	56%	60%	60%	59%	55%



The Grove bulls giving Marc Ross, Pinjarra, an A.I. anatomy lesson!

The Grove.

Australia's Premier Performance Shorthorn Herd

Lots 105–115 SPECIALLY SELECTED PERFORMANCE RECORDED DURHAM REDS

105 THE GROVE L0326 1/2 SENEPOL (DR) (P)

Tattoo: L0326 DOB: 29/09/2015 Colour: Red Reg No: BDBL0326

SE FIVE STAR TITAN 05-0455 (DR)
SIRE: SE FIVE STAR 080914 (DR) (P)
 SE FIVE STAR PRINCESS BONNIE (DR)
 THE GROVE SUPERSTAR D421 (SR) (P)
DAM: THE GROVE F033 (SR) (P)
 THE GROVE UNIQUE B182 (SR) (P)

SELECTION INDEX VALUES

Market Target: Index Value:
 MSA-B2 +\$66

MEASUREMENTS

Scrotal Size |
 Weight |
 EMA |
 Rib Fat |
 Rump Fat |
 IMF |

BUYER:

\$:

JUNE 2017 PERFORMANCE HERDS AUSTRALIA BREEDPLAN EBVs

	CED	CEM	GL	BW	200	400	600	MCW	MILK	SS	CWT	EMA	RIB	RUMP	RBV	IMF
EBV			-1.7	+3.8	+35	+64	+66	+52	+4	+1.5	+55	+3.6	-2.1	-2.0	+2.3	+0.2
ACC			35%	57%	67%	65%	65%	56%	42%	65%	56%	42%	51%	50%	47%	43%

106 THE GROVE L0462 1/4 BRAHMAN (DR) (P)

Tattoo: L0462 DOB: 21/08/2015 Colour: Roan Reg No: BDBL0462

SPRYS PATENTS ACE G38 (SR)
SIRE: THE GROVE J0606 (SR) (P)
 THE GROVE F532 (SR) (P)
 BR BIZZY 42 (DR) (H)
DAM: THE GROVE F625 (DR) (P)
 THE GROVE RAMONA Z950 (SR) (P)

SELECTION INDEX VALUES

Market Target: Index Value:
 MSA-B2 +\$51

MEASUREMENTS

Scrotal Size |
 Weight |
 EMA |
 Rib Fat |
 Rump Fat |
 IMF |

BUYER:

\$:

JUNE 2017 PERFORMANCE HERDS AUSTRALIA BREEDPLAN EBVs

	CED	CEM	GL	BW	200	400	600	MCW	MILK	SS	CWT	EMA	RIB	RUMP	RBV	IMF
EBV			-1.7	+2.7	+29	+40	+56	+59	+5	+1.1	+44	+2.4	-1.6	-1.8	+1.5	+0.0
ACC			29%	56%	68%	62%	65%	56%	37%	65%	54%	41%	49%	49%	46%	40%

107 THE GROVE L0694 1/4SEN 1/8BRA (DR) (P)

Tattoo: L0694 DOB: 23/10/2015 Colour: Red Reg No: BDBL0694

THE GROVE OSCAR A748 (SR) (P)
SIRE: THE GROVE TIDE-RIP E667 (SR) (P)
 THE GROVE RAMONA Z445 (SR) (P)
 SE FIVE STAR 080914 (DR) (P)
DAM: THE GROVE H0538 (DR) (P)
 THE GROVE E345 (DR) (P)

SELECTION INDEX VALUES

Market Target: Index Value:
 MSA-B2 +\$59

MEASUREMENTS

Scrotal Size |
 Weight |
 EMA |
 Rib Fat |
 Rump Fat |
 IMF |

BUYER:

\$:

JUNE 2017 PERFORMANCE HERDS AUSTRALIA BREEDPLAN EBVs

	CED	CEM	GL	BW	200	400	600	MCW	MILK	SS	CWT	EMA	RIB	RUMP	RBV	IMF
EBV	-2.1	+0.5	-1.4	+4.5	+33	+47	+57	+43	+6	+2.4	+42	+5.4	-1.7	-2.1	+2.6	+0.3
ACC	37%	35%	51%	61%	69%	65%	68%	59%	48%	69%	59%	50%	58%	58%	56%	51%

108 THE GROVE L0695 1/4SEN 1/8BRA (DR) (P)

Tattoo: L0695 DOB: 01/10/2015 Colour: Red Reg No: BDBL0695

THE GROVE OSCAR A748 (SR) (P)
SIRE: THE GROVE TIDE-RIP E667 (SR) (P)
 THE GROVE RAMONA Z445 (SR) (P)
 SE FIVE STAR 080914 (DR) (P)
DAM: THE GROVE H0525 (DR)
 THE GROVE E335 (DR) (P)

SELECTION INDEX VALUES	
Market Target:	Index Value:
MSA-B2	+\$54

MEASUREMENTS	
Scrotal Size	
Weight	
EMA	
Rib Fat	
Rump Fat	
IMF	

BUYER: \$:

JUNE 2017 PERFORMANCE HERDS AUSTRALIA BREEDPLAN EBVs																
	CED	CEM	GL	BW	200	400	600	MCW	MILK	SS	CWT	EMA	RIB	RUMP	RBY	IMF
EBV	-2.4	+0.1	-1.8	+5.9	+47	+55	+64	+44	+7	+2.3	+43	+3.9	-1.4	-1.7	+2.0	+0.0
ACC	36%	34%	51%	63%	70%	65%	68%	61%	48%	69%	59%	49%	58%	58%	55%	50%

109 THE GROVE L0701 1/4SEN 1/8BRA (DR) (P)

Tattoo: L0701 DOB: 14/11/2015 Colour: Red Reg No: BDBL0701

THE GROVE OSCAR A748 (SR) (P)
SIRE: THE GROVE TIDE-RIP E667 (SR) (P)
 THE GROVE RAMONA Z445 (SR) (P)
 SE CARIBBEAN OUTBACK 04020 (DR)
DAM: THE GROVE H0496 (DR)
 THE GROVE E327 (DR) (P)

SELECTION INDEX VALUES	
Market Target:	Index Value:
MSA-B2	+\$43

MEASUREMENTS	
Scrotal Size	
Weight	
EMA	
Rib Fat	
Rump Fat	
IMF	

BUYER: \$:

JUNE 2017 PERFORMANCE HERDS AUSTRALIA BREEDPLAN EBVs																
	CED	CEM	GL	BW	200	400	600	MCW	MILK	SS	CWT	EMA	RIB	RUMP	RBY	IMF
EBV	-4.2	-0.2	-0.8	+5.0	+29	+40	+56	+57	+4	+2.1	+34	+4.7	-0.9	-1.5	+1.9	+0.0
ACC	36%	34%	51%	62%	68%	62%	62%	56%	47%	49%	53%	42%	51%	51%	49%	47%

110 THE GROVE L0868 1/2SEN1/4BRA (DR) (P)

Tattoo: L0868 DOB: 26/08/2015 Colour: Red Reg No: BDBL0868

SE AACO SE6R041 (DR)
SIRE: SE 5 STAR 120115 (DR)
 SE 5 STAR 050421 (DR)
 BR BIZZY 2375 (DR) (H)
DAM: THE GROVE E345 (DR) (P)
 THE GROVE B545 (SR) (P)

SELECTION INDEX VALUES	
Market Target:	Index Value:
MSA-B2	+\$35

MEASUREMENTS	
Scrotal Size	
Weight	
EMA	
Rib Fat	
Rump Fat	
IMF	

BUYER: \$:

JUNE 2017 PERFORMANCE HERDS AUSTRALIA BREEDPLAN EBVs																
	CED	CEM	GL	BW	200	400	600	MCW	MILK	SS	CWT	EMA	RIB	RUMP	RBY	IMF
EBV				+1.5	+10	+19	+28	+19	+5	+1.7	+24	+2.5	-0.1	-0.9	+0.4	+0.7
ACC				48%	64%	56%	61%	50%	33%	62%	50%	37%	47%	47%	43%	37%

111 THE GROVE L0874 1/2SEN1/8SANTA (DR) (P)

Tattoo: L0874 DOB: 18/09/2015 Colour: Red Reg No: BDBL0874

SE AACO SE6R041 (DR)
SIRE: SE 5 STAR 120115 (DR)
 SE 5 STAR 050421 (DR)
 BELMORE JUNIOR Z207 (SR) (P)
DAM: THE GROVE E498 (DR) (P)
 THE GROVE Z502 1/2 SANTA (DR) (H)

SELECTION INDEX VALUES	
Market Target:	Index Value:
MSA-B2	+\$32

MEASUREMENTS	
Scrotal Size	
Weight	
EMA	
Rib Fat	
Rump Fat	
IMF	

BUYER: \$:

JUNE 2017 PERFORMANCE HERDS AUSTRALIA BREEDPLAN EBVs																
	CED	CEM	GL	BW	200	400	600	MCW	MILK	SS	CWT	EMA	RIB	RUMP	RBY	IMF
EBV				+1.9	+16	+24	+25	+15	+8	+0.8	+24	+1.0	-0.4	-0.5	-0.2	+0.8
ACC				43%	58%	51%	55%	45%	28%	57%	44%	32%	39%	39%	36%	29%

112 THE GROVE L0884 1/2SEN1/4BRA (DR) (P)

Tattoo: L0884 DOB: 27/08/2015 Colour: Red Reg No: BDBL0884

SE AACO SE6R041 (DR) SIRE: SE 5 STAR 120115 (DR) SE 5 STAR 050421 (DR)	SELECTION INDEX VALUES		MEASUREMENTS													
BR BIZZY 2375 (DR) (H) DAM: THE GROVE E295 (DR) (P) THE GROVE SABRINA B708 (SR) (P)	Market Target:	Index Value:	Scrotal Size													
BUYER: \$:	MSA-B2	+\$34	Weight													
			EMA													
			Rib Fat													
			Rump Fat													
			IMF													
JUNE 2017 PERFORMANCE HERDS AUSTRALIA BREEDPLAN EBVs																
	CED	CEM	GL	BW	200	400	600	MCW	MILK	SS	CWT	EMA	RIB	RUMP	RBV	IMF
EBV				+2.8	+19	+29	+43	+35	+5	+2.3	+30	+0.9	-2.4	-4.0	+1.4	-0.1
ACC				48%	63%	56%	61%	50%	30%	62%	49%	37%	46%	46%	43%	36%

113 THE GROVE L0891 1/2SEN1/8SANTA (DR) (P)

Tattoo: L0891 DOB: 23/10/2015 Colour: Red Reg No: BDBL0891

SE AACO SE6R041 (DR) SIRE: SE 5 STAR 120115 (DR) SE 5 STAR 050421 (DR)	SELECTION INDEX VALUES		MEASUREMENTS													
NARRALDA BUSHRANGER B114 (SR) (P) DAM: THE GROVE E136 (DR) (P) THE GROVE B791 (DR) (P)	Market Target:	Index Value:	Scrotal Size													
BUYER: \$:	MSA-B2	+\$45	Weight													
			EMA													
			Rib Fat													
			Rump Fat													
			IMF													
JUNE 2017 PERFORMANCE HERDS AUSTRALIA BREEDPLAN EBVs																
	CED	CEM	GL	BW	200	400	600	MCW	MILK	SS	CWT	EMA	RIB	RUMP	RBV	IMF
EBV			-0.5	+1.2	+8	+20	+32	+31	+5	+2.2	+28	+2.8	-1.0	-1.3	+1.0	+0.7
ACC			25%	46%	59%	52%	56%	46%	30%	58%	46%	35%	42%	42%	39%	32%

114 THE GROVE L0886 1/2SEN1/4BRA (DR)

Tattoo: L0898 DOB: 16/08/2015 Colour: Roan Reg No: BDBL0898

SE AACO SE6R041 (DR) SIRE: SE 5 STAR 120115 (DR) SE 5 STAR 050421 (DR)	SELECTION INDEX VALUES		MEASUREMENTS													
BR BIZZY 2375 (DR) (H) DAM: THE GROVE E357 (DR) (SC) THE GROVE VIRGINIA B870 (SR) (P)	Market Target:	Index Value:	Scrotal Size													
BUYER: \$:	MSA-B2	+\$31	Weight													
			EMA													
			Rib Fat													
			Rump Fat													
			IMF													
JUNE 2017 PERFORMANCE HERDS AUSTRALIA BREEDPLAN EBVs																
	CED	CEM	GL	BW	200	400	600	MCW	MILK	SS	CWT	EMA	RIB	RUMP	RBV	IMF
EBV				+2.3	+17	+25	+32	+20	+7	+0.7	+30	+3.1	-1.9	-3.2	+2.1	+0.0
ACC				47%	63%	55%	61%	50%	29%	61%	49%	36%	46%	46%	43%	36%

115 THE GROVE L0918 1/4 SENEPOL (DR) (P)

Tattoo: L0918 DOB: 03/10/2015 Colour: Roan Reg No: BDBL0918

THE GROVE D604 (SR) (P) SIRE: THE GROVE H0144 (SR) (P) THE GROVE NELL Z451 (SR) (P)	SELECTION INDEX VALUES		MEASUREMENTS													
SE FIVE STAR 080914 (DR) (P) DAM: THE GROVE F725 (DR) (P) THE GROVE W250 (SR) (P)	Market Target:	Index Value:	Scrotal Size													
BUYER: \$:	MSA-B2	+\$63	Weight													
			EMA													
			Rib Fat													
			Rump Fat													
			IMF													
JUNE 2017 PERFORMANCE HERDS AUSTRALIA BREEDPLAN EBVs																
	CED	CEM	GL	BW	200	400	600	MCW	MILK	SS	CWT	EMA	RIB	RUMP	RBV	IMF
EBV			-1.4	+3.4	+27	+45	+61	+68	+3	+1.0	+42	+3.6	-0.2	-0.2	+0.4	+0.7
ACC			27%	55%	67%	62%	65%	56%	37%	68%	55%	42%	49%	49%	47%	40%

The Grove.

Australia's Premier Performance Shorthorn Herd

Lots 116–126 SPECIALLY SELECTED PERFORMANCE RECORDED DURHAM BLACKS

As with any Composite bull, the BREEDPLAN figures are not as accurate as with a pure breed. Calculating the heterosis levels creates challenges. These Durham Black bulls are all by some of the leading genetics in the Angus world, combined with some of the best in the Shorthorn world, even though the figures may

not suggest this. We have great confidence in these bulls hitting industry specs required. A lot of this year's draft are at the point where we would like to stabilise them i.e. 5/8 Angus, 3/8 Shorthorn. We feel this gives a more stabilised genetic animal with a greater propensity to be homozygous Black.

116 THE GROVE L0290 1/2 ANGUS (DR) (P)

Tattoo: L0290 DOB: 15/08/2015 Colour: Reg No: BDBL0290

AA RAFF DANNY BOY D207 (DR)
SIRE: AA K5X GALIANO G53 (DR)
 AA K5X ZAHLI Z11 (DR)
 FUTURITY SILVERADO (SR) (P)
DAM: THE GROVE DALE C742 (SR) (H)
 THE GROVE R.E. DALE W732 (SR) (H)

SELECTION INDEX VALUES	
Market Target:	Index Value:
MSA-B2	+\$31

MEASUREMENTS	
Scrotal Size	
Weight	
EMA	
Rib Fat	
Rump Fat	
IMF	

BUYER:

\$:

JUNE 2017 PERFORMANCE HERDS AUSTRALIA BREEDPLAN EBVs

	CED	CEM	GL	BW	200	400	600	MCW	MILK	SS	CWT	EMA	RIB	RUMP	RBY	IMF
EBV				+2.6	+18	+25	+38	+38	+3	+2.2	+30	+2.5	-1.9	-1.9	+1.3	+0.2
ACC				51%	66%	59%	64%	53%	37%	64%	53%	41%	48%	49%	45%	40%

117 THE GROVE L0589 3/8 ANG 1/4 BRA (DR) (P)

Tattoo: L0589 DOB: 03/08/2015 Colour: Black Reg No: BDBL0589

AA RENNYLEA B77 (DR)
SIRE: THE GROVE J0568 (DR) (P)
 THE GROVE F834 1/2 ANGUS (DR) (P)
 BR BIZZY 2375 (DR) (H)
DAM: THE GROVE G0265 (DR) (P)
 THE GROVE NELL Z451 (SR) (P)

SELECTION INDEX VALUES	
Market Target:	Index Value:
MSA-B2	+\$64

MEASUREMENTS	
Scrotal Size	
Weight	
EMA	
Rib Fat	
Rump Fat	
IMF	

BUYER:

\$:

JUNE 2017 PERFORMANCE HERDS AUSTRALIA BREEDPLAN EBVs

	CED	CEM	GL	BW	200	400	600	MCW	MILK	SS	CWT	EMA	RIB	RUMP	RBY	IMF
EBV	+2.1		-2.2	+2.6	+28	+44	+59	+53	+7	+2.0	+41	+3.8	+0.1	-0.4	+0.5	+0.6
ACC	32%		49%	61%	69%	64%	68%	58%	41%	68%	58%	48%	56%	56%	53%	48%

118 THE GROVE L0627 3/8ANG1/4SEN1/ (DR) (P)

Tattoo: L0627 DOB: 23/07/2015 Colour: Reg No: BDBL0627

AA RENNYLEA B77 (DR)
SIRE: THE GROVE J0568 (DR) (P)
 THE GROVE F834 1/2 ANGUS (DR) (P)
 SE FIVE STAR 080914 (DR) (P)
DAM: THE GROVE G0394 1/2 SEN 1/8 BR (DR) (SC)
 THE GROVE E213 (DR) (P)

SELECTION INDEX VALUES	
Market Target:	Index Value:
MSA-B2	+\$67

MEASUREMENTS	
Scrotal Size	
Weight	
EMA	
Rib Fat	
Rump Fat	
IMF	

BUYER:

\$:

JUNE 2017 PERFORMANCE HERDS AUSTRALIA BREEDPLAN EBVs

	CED	CEM	GL	BW	200	400	600	MCW	MILK	SS	CWT	EMA	RIB	RUMP	RBY	IMF
EBV			-1.8	+3.6	+36	+56	+64	+61	+6	+1.7	+51	+3.1	-0.9	-0.2	+1.0	+0.6
ACC			30%	44%	46%	43%	44%	37%	30%	39%	37%	28%	35%	35%	33%	31%

119 THE GROVE L0630 5/8 ANGUS (DR) (P)

Tattoo: L0630 DOB: 06/09/2015 Colour: Reg No: BDBL0630

AA RENNYLEA B77 (DR)
SIRE: THE GROVE J0568 (DR) (P)
 THE GROVE F834 1/2 ANGUS (DR) (P)
 AA RENNYLEA D634 (DR)
DAM: THE GROVE G0022 1/2 ANGUS (DR) (P)
 THE GROVE DALE E044 (SR) (P)

SELECTION INDEX VALUES	
Market Target:	Index Value:
MSA-B2	+\$72

MEASUREMENTS
Scrotal Size
Weight
EMA
Rib Fat
Rump Fat
IMF

BUYER: \$:

JUNE 2017 PERFORMANCE HERDS AUSTRALIA BREEDPLAN EBVs

	CED	CEM	GL	BW	200	400	600	MCW	MILK	SS	CWT	EMA	RIB	RUMP	RBV	IMF
EBV			-1.0	+4.5	+37	+57	+71	+65	+6	+1.5	+56	+3.6	-1.7	-1.6	+2.0	+0.6
ACC			39%	58%	66%	60%	65%	55%	33%	67%	53%	42%	52%	52%	48%	41%

120 THE GROVE L0632 3/8 ANG 1/4BRA (DR) (P)

Tattoo: L0632 DOB: 05/08/2015 Colour: Reg No: BDBL0632

AA RENNYLEA B77 (DR)
SIRE: THE GROVE J0568 (DR) (P)
 THE GROVE F834 1/2 ANGUS (DR) (P)
 BR BIZZY 2375 (DR) (H)
DAM: THE GROVE G0280 1/2 BRAHMAN (DR) (P)
 THE GROVE Z285 (SR) (P)

SELECTION INDEX VALUES	
Market Target:	Index Value:
MSA-B2	+\$50

MEASUREMENTS
Scrotal Size
Weight
EMA
Rib Fat
Rump Fat
IMF

BUYER: \$:

JUNE 2017 PERFORMANCE HERDS AUSTRALIA BREEDPLAN EBVs

	CED	CEM	GL	BW	200	400	600	MCW	MILK	SS	CWT	EMA	RIB	RUMP	RBV	IMF
EBV			-1.2	+2.6	+24	+37	+40	+33	+4	+2.4	+32	+2.4	+0.0	+0.1	+0.0	+0.9
ACC			30%	54%	65%	59%	63%	54%	36%	65%	52%	41%	42%	42%	42%	40%

121 THE GROVE L0633 5/8 ANGUS (DR) (P)

Tattoo: L0633 DOB: 13/09/2015 Colour: Reg No: BDBL0633

AA RENNYLEA B77 (DR)
SIRE: THE GROVE J0568 (DR) (P)
 THE GROVE F834 1/2 ANGUS (DR) (P)
 AA RENNYLEA B77 (DR)
DAM: THE GROVE G0036 (DR) (P)
 THE GROVE E161 (SR) (P)

SELECTION INDEX VALUES	
Market Target:	Index Value:
MSA-B2	+\$52

MEASUREMENTS
Scrotal Size
Weight
EMA
Rib Fat
Rump Fat
IMF

BUYER: \$:

JUNE 2017 PERFORMANCE HERDS AUSTRALIA BREEDPLAN EBVs

	CED	CEM	GL	BW	200	400	600	MCW	MILK	SS	CWT	EMA	RIB	RUMP	RBV	IMF
EBV			-1.3	+2.7	+27	+48	+48	+40	+5	+1.1	+44	+3.7	-0.6	+0.1	+1.2	+0.4
ACC			41%	60%	69%	62%	67%	57%	34%	70%	56%	44%	54%	54%	51%	43%

122 THE GROVE L0639 5/8 ANGUS (DR) (P)

Tattoo: L0639 DOB: 08/09/2015 Colour: Reg No: BDBL0639

AA RENNYLEA B77 (DR)
SIRE: THE GROVE J0568 (DR) (P)
 THE GROVE F834 1/2 ANGUS (DR) (P)
 AA RENNYLEA B77 (DR)
DAM: THE GROVE G0006 1/2 ANGUS (DR) (P)
 THE GROVE EMMA E028 (SR) (P)

SELECTION INDEX VALUES	
Market Target:	Index Value:
MSA-B2	+\$44

MEASUREMENTS
Scrotal Size
Weight
EMA
Rib Fat
Rump Fat
IMF

BUYER: \$:

JUNE 2017 PERFORMANCE HERDS AUSTRALIA BREEDPLAN EBVs

	CED	CEM	GL	BW	200	400	600	MCW	MILK	SS	CWT	EMA	RIB	RUMP	RBV	IMF
EBV			-1.7	+2.4	+25	+38	+40	+37	+5	+1.9	+29	+1.9	+1.1	+2.3	-1.1	+0.8
ACC			42%	61%	69%	62%	68%	57%	36%	70%	56%	45%	55%	55%	51%	43%

123 THE GROVE L0645 3/8 ANG 1/4 BR (DR) (P)

Tattoo: L0645 DOB: 28/08/2015 Colour: Reg No: BDBL0645

AA RENNYLEA B77 (DR)
SIRE: THE GROVE J0568 (DR) (P)
 THE GROVE F834 1/2 ANGUS (DR) (P)

BR BIZZY 42 (DR) (H)
DAM: THE GROVE G0289 1/2 BRAHMAN (DR) (P)
 THE GROVE B172 (SR) (P)

BUYER:

SELECTION INDEX VALUES

Market Target: Index Value:
 MSA-B2 +\$46

MEASUREMENTS

Scrotal Size |
 Weight |
 EMA |
 Rib Fat |
 Rump Fat |
 IMF |

JUNE 2017 PERFORMANCE HERDS AUSTRALIA BREEDPLAN EBVs

	CED	CEM	GL	BW	200	400	600	MCW	MILK	SS	CWT	EMA	RIB	RUMP	RBY	IMF
EBV			-1.4	+2.7	+27	+40	+46	+34	+6	+0.6	+39	+1.7	-0.2	+0.2	+0.2	+0.6
ACC			28%	54%	66%	59%	64%	54%	34%	65%	53%	41%	50%	50%	47%	40%

124 THE GROVE L0649 5/8 ANGUS (DR) (P)

Tattoo: L0649 DOB: 04/09/2015 Colour: Reg No: BDBL0649

AA RENNYLEA B77 (DR)
SIRE: THE GROVE J0568 (DR) (P)
 THE GROVE F834 1/2 ANGUS (DR) (P)

AA RENNYLEA B77 (DR)
DAM: THE GROVE G0216 1/2 ANGUS (DR) (P)
 THE GROVE E160 (SR) (P)

BUYER:

SELECTION INDEX VALUES

Market Target: Index Value:
 MSA-B2 +\$65

MEASUREMENTS

Scrotal Size |
 Weight |
 EMA |
 Rib Fat |
 Rump Fat |
 IMF |

JUNE 2017 PERFORMANCE HERDS AUSTRALIA BREEDPLAN EBVs

	CED	CEM	GL	BW	200	400	600	MCW	MILK	SS	CWT	EMA	RIB	RUMP	RBY	IMF
EBV			-1.2	+4.2	+38	+58	+64	+54	+6	+2.1	+50	+3.2	-0.3	+0.5	+0.6	+0.6
ACC			42%	61%	69%	62%	67%	57%	36%	70%	56%	44%	54%	54%	51%	43%

125 THE GROVE L0656 5/8 ANGUS (DR) (P)

Tattoo: L0656 DOB: 24/09/2015 Colour: Reg No: BDBL0656

AA RENNYLEA B77 (DR)
SIRE: THE GROVE J0568 (DR) (P)
 THE GROVE F834 1/2 ANGUS (DR) (P)

AA RENNYLEA D634 (DR)
DAM: THE GROVE G0023 1/2 ANGUS (DR) (P)
 THE GROVE E197 (SR) (P)

BUYER:

SELECTION INDEX VALUES

Market Target: Index Value:
 MSA-B2 +\$48

MEASUREMENTS

Scrotal Size |
 Weight |
 EMA |
 Rib Fat |
 Rump Fat |
 IMF |

JUNE 2017 PERFORMANCE HERDS AUSTRALIA BREEDPLAN EBVs

	CED	CEM	GL	BW	200	400	600	MCW	MILK	SS	CWT	EMA	RIB	RUMP	RBY	IMF
EBV			-0.1	+4.7	+36	+45	+48	+44	+4	+2.0	+34	+0.6	+0.6	+1.3	-0.9	+1.1
ACC			39%	58%	66%	60%	65%	55%	32%	67%	53%	42%	52%	52%	48%	40%

126 THE GROVE L0657 5/8 ANGUS (DR) (P)

Tattoo: L0657 DOB: 22/08/2015 Colour: Reg No: BDBL0657

AA RENNYLEA B77 (DR)
SIRE: THE GROVE J0568 (DR) (P)
 THE GROVE F834 1/2 ANGUS (DR) (P)

AA RENNYLEA B77 (DR)
DAM: THE GROVE G0212 1/2 ANGUS (DR) (P)
 THE GROVE DALE E221 (SR) (P)

BUYER:

SELECTION INDEX VALUES

Market Target: Index Value:
 MSA-B2 +\$67

MEASUREMENTS

Scrotal Size |
 Weight |
 EMA |
 Rib Fat |
 Rump Fat |
 IMF |

JUNE 2017 PERFORMANCE HERDS AUSTRALIA BREEDPLAN EBVs

	CED	CEM	GL	BW	200	400	600	MCW	MILK	SS	CWT	EMA	RIB	RUMP	RBY	IMF
EBV			-1.7	+4.1	+37	+58	+63	+49	+5	+1.3	+53	+4.1	-1.4	-0.9	+1.8	+0.5
ACC			41%	60%	67%	62%	67%	57%	35%	69%	56%	44%	54%	54%	51%	43%

The Grove.

Australia's Premier Performance Shorthorn Herd

Lots 127-136 **SPECIALY SELECTED PERFORMANCE RECORDED YEARLING DURHAM BLACKS**

Autumn born from first calf heifers – all born unassisted.

127 THE GROVE M0047 3/4 ANGUS (DR) (P) (AI)

Tattoo: M0047 DOB: 23/03/2016 Colour: Reg No: BDBM0047

AA TE MANIA BERKLEY B1 (DR)
SIRE: AA TE MANIA EMPEROR E343 (DR)
 TE MANIA LOWAN Z74 (DR)

AA K5X GILBERT G1 (DR)
DAM: THE GROVE J0268 (DR) (P)
 THE GROVE EVELYN Y572 (SR) (P)

BUYER:

SELECTION INDEX VALUES

Market Target: Index Value:

MSA-B2 +\$36

MEASUREMENTS

Scrotal Size |

Weight |

EMA |

Rib Fat |

Rump Fat |

IMF |

JUNE 2017 PERFORMANCE HERDS AUSTRALIA BREEDPLAN EBVs

	CED	CEM	GL	BW	200	400	600	MCW	MILK	SS	CWT	EMA	RIB	RUMP	RBY	IMF
EBV			-0.7	+4.1	+28	+41	+46	+34	+8	+1.4	+37	+1.9	-0.8	-0.7	+0.9	+0.2
ACC			57%	70%	70%	67%	63%	49%	33%	70%	54%	41%	50%	50%	48%	41%

128 THE GROVE M0048 3/4 ANGUS (DR) (P) (AI)

Tattoo: M0048 DOB: 18/03/2016 Colour: Reg No: BDBM0048

AAA A A R TEN X 7008 S A (DR)
SIRE: AAA DEER VALLEY ALL IN 2138 (DR)
 AAA DEER VALLEY RITA 0274 (DR)

AA K5X GILBERT G1 (DR)
DAM: THE GROVE J0551 (DR) (P)
 THE GROVE F440 (SR) (P)

BUYER:

SELECTION INDEX VALUES

Market Target: Index Value:

MSA-B2 +\$41

MEASUREMENTS

Scrotal Size |

Weight |

EMA |

Rib Fat |

Rump Fat |

IMF |

JUNE 2017 PERFORMANCE HERDS AUSTRALIA BREEDPLAN EBVs

	CED	CEM	GL	BW	200	400	600	MCW	MILK	SS	CWT	EMA	RIB	RUMP	RBY	IMF
EBV			-1.8	+3.6	+32	+36	+50	+40		+1.8	+37	+1.7	-1.2	-2.1	+1.1	+0.1
ACC			48%	67%	65%	61%	56%	39%		66%	47%	37%	43%	43%	42%	33%

129 THE GROVE M0050 1/2 ANGUS (DR) (P) (AI)

Tattoo: M0050 DOB: 04/03/2016 Colour: Reg No: BDBM0050

AA TE MANIA AFRICA A217 (DR)
SIRE: LAWSONS HARRY H234 (DR)
 AA LAWSONS NEW DESIGN 5050 E116 E1165 (DR)

THE GROVE A254 (SR) (P)
DAM: THE GROVE J0333 (SR) (P)
 THE GROVE B015 (SR) (P)

BUYER:

SELECTION INDEX VALUES

Market Target: Index Value:

MSA-B2 +\$43

MEASUREMENTS

Scrotal Size |

Weight |

EMA |

Rib Fat |

Rump Fat |

IMF |

JUNE 2017 PERFORMANCE HERDS AUSTRALIA BREEDPLAN EBVs

	CED	CEM	GL	BW	200	400	600	MCW	MILK	SS	CWT	EMA	RIB	RUMP	RBY	IMF
EBV			-0.6	+2.7	+21	+31	+41	+34	+5	+1.8	+28	+2.3	+0.4	-0.2	-0.2	+0.6
ACC			42%	57%	58%	54%	51%	39%	28%	57%	43%	35%	41%	41%	39%	34%

130 THE GROVE M0058 3/4 ANGUS (DR) (P) (AI)

Tattoo: M0058 DOB: 02/03/2016 Colour: Reg No: BDBM0058

AA TE MANIA BERKLEY B1 (DR)
SIRE: AA TE MANIA EMPEROR E343 (DR)
 TE MANIA LOWAN Z74 (DR)
 AA K5X GILBERT G1 (DR)
DAM: THE GROVE J0280 (DR) (P)
 THE GROVE HOLLY Y335 (SR) (P)

SELECTION INDEX VALUES	
Market Target:	Index Value:
MSA-B2	+\$38

MEASUREMENTS
Scrotal Size
Weight
EMA
Rib Fat
Rump Fat
IMF

BUYER: \$:

JUNE 2017 PERFORMANCE HERDS AUSTRALIA BREEDPLAN EBVs																
	CED	CEM	GL	BW	200	400	600	MCW	MILK	SS	CWT	EMA	RIB	RUMP	RBY	IMF
EBV			-0.6	+4.8	+29	+42	+52	+41	+6	+1.2	+38	+3.2	-0.1	+0.2	+1.0	+0.0
ACC			57%	70%	70%	67%	63%	49%	33%	70%	54%	42%	51%	50%	49%	42%

131 THE GROVE M0098 3/4 ANG 1/4 SE (DR) (P) (AI)

Tattoo: M0098 DOB: 28/02/2016 Colour: Reg No: BDBM0098

AA C R A BEXTOR 872 5205 608 (DR)
SIRE: G A R PROPHET (SR)
 AA G A R OBJECTIVE 1885 (DR)
 AA K5X GILBERT G1 (DR)
DAM: THE GROVE J0683 (DR) (P)
 THE GROVE F762 (DR) (P)

SELECTION INDEX VALUES	
Market Target:	Index Value:
MSA-B2	+\$35

MEASUREMENTS
Scrotal Size
Weight
EMA
Rib Fat
Rump Fat
IMF

BUYER: \$:

JUNE 2017 PERFORMANCE HERDS AUSTRALIA BREEDPLAN EBVs																
	CED	CEM	GL	BW	200	400	600	MCW	MILK	SS	CWT	EMA	RIB	RUMP	RBY	IMF
EBV			-0.6	+2.7	+20	+30	+39	+30		+2.5	+27	+0.3	-0.4	-0.9	-0.4	+0.6
ACC			47%	65%	64%	60%	55%	38%		66%	46%	36%	41%	41%	41%	31%

132 THE GROVE M0099 3/4 ANGUS (DR) (P) (AI)

Tattoo: M0099 DOB: 29/02/2016 Colour: Reg No: BDBM0099

AA KAROO W109 DIRECTION Z181 (DR)
SIRE: CARABAR DOCKLANDS D62 (DR)
 AA CARABAR BLACKCAP MARY B12 (DR)
 AA K5X GILBERT G1 (DR)
DAM: THE GROVE J0276 (DR) (P)
 THE GROVE Y152 (SR) (P)

SELECTION INDEX VALUES	
Market Target:	Index Value:
MSA-B2	+\$21

MEASUREMENTS
Scrotal Size
Weight
EMA
Rib Fat
Rump Fat
IMF

BUYER: \$:

JUNE 2017 PERFORMANCE HERDS AUSTRALIA BREEDPLAN EBVs																
	CED	CEM	GL	BW	200	400	600	MCW	MILK	SS	CWT	EMA	RIB	RUMP	RBY	IMF
EBV			-1.2	+0.7	+16	+9	+16	+4	+6	+1.0	+17	+0.8	+0.2	-0.4	-0.4	+0.4
ACC			51%	66%	65%	62%	56%	38%	25%	66%	47%	37%	43%	43%	42%	33%

133 THE GROVE M0102 3/4 ANGUS (DR) (P) (AI)

Tattoo: M0102 DOB: 03/03/2016 Colour: Reg No: BDBM0102

AAA A A R TEN X 7008 S A (DR)
SIRE: AAA DEER VALLEY ALL IN 2138 (DR)
 AAA DEER VALLEY RITA 0274 (DR)
 AA K5X GILBERT G1 (DR)
DAM: THE GROVE J0489 (DR) (P)
 THE GROVE HUM DALE F1118 (SR) (P)

SELECTION INDEX VALUES	
Market Target:	Index Value:
MSA-B2	+\$42

MEASUREMENTS
Scrotal Size
Weight
EMA
Rib Fat
Rump Fat
IMF

BUYER: \$:

JUNE 2017 PERFORMANCE HERDS AUSTRALIA BREEDPLAN EBVs																
	CED	CEM	GL	BW	200	400	600	MCW	MILK	SS	CWT	EMA	RIB	RUMP	RBY	IMF
EBV			-1.4	+0.1	+19	+28	+35	+28		+0.8	+40	+2.3	-1.0	-2.0	+1.2	+0.2
ACC			48%	67%	65%	61%	56%	40%		66%	47%	38%	43%	43%	42%	34%

134 THE GROVE M0103 3/4 ANGUS (DR) (P) (AI)

Tattoo: M0103 DOB: 01/03/2016 Colour: Reg No: BDBM0103

AA C R A BEXTOR 872 5205 608 (DR)
SIRE: G A R PROPHET (SR)
 AA G A R OBJECTIVE 1885 (DR)
 AA K5X ADDITION A20 (DR) (P)
DAM: THE GROVE J0811 (DR) (P)
 THE GROVE KOOKAS DALE E258 (SR) (P)

SELECTION INDEX VALUES	
Market Target:	Index Value:
MSA-B2	+\$40

MEASUREMENTS
Scrotal Size
Weight
EMA
Rib Fat
Rump Fat
IMF

BUYER: \$:

JUNE 2017 PERFORMANCE HERDS AUSTRALIA BREEDPLAN EBVs																
	CED	CEM	GL	BW	200	400	600	MCW	MILK	SS	CWT	EMA	RIB	RUMP	RBV	IMF
EBV			-1.1	+2.0	+19	+32	+44	+39	+7	+1.9	+36	+2.3	-1.7	-2.8	+1.4	+0.0
ACC			52%	66%	65%	62%	57%	41%	26%	67%	48%	39%	44%	44%	43%	35%

135 THE GROVE M0108 3/4 ANGUS (DR) (P) (AI)

Tattoo: M0108 DOB: 01/03/2016 Colour: Reg No: BDBM0108

AAA A A R TEN X 7008 S A (DR)
SIRE: AAA DEER VALLEY ALL IN 2138 (DR)
 AAA DEER VALLEY RITA 0274 (DR)
 AA K5X GILBERT G1 (DR)
DAM: THE GROVE J0913 (DR) (P)
 THE GROVE Z269 (SR) (P)

SELECTION INDEX VALUES	
Market Target:	Index Value:
MSA-B2	+\$34

MEASUREMENTS
Scrotal Size
Weight
EMA
Rib Fat
Rump Fat
IMF

BUYER: \$:

JUNE 2017 PERFORMANCE HERDS AUSTRALIA BREEDPLAN EBVs																
	CED	CEM	GL	BW	200	400	600	MCW	MILK	SS	CWT	EMA	RIB	RUMP	RBV	IMF
EBV			-0.1	+5.3	+31	+37	+50	+39		+1.2	+32	+2.0	-0.1	-0.7	+0.2	+0.5
ACC			51%	66%	65%	61%	56%	39%		66%	47%	37%	43%	43%	42%	34%

136 THE GROVE M0676 3/4 ANGUS (DR) (P) (AI)

Tattoo: M0676 DOB: 07/03/2016 Colour: Reg No: BDBM0676

AAA A A R TEN X 7008 S A (DR)
SIRE: AAA DEER VALLEY ALL IN 2138 (DR)
 AAA DEER VALLEY RITA 0274 (DR)
 AA K5X GILBERT G1 (DR)
DAM: THE GROVE J0320 (DR) (P)
 THE GROVE C567 (SR) (P)

SELECTION INDEX VALUES	
Market Target:	Index Value:
MSA-B2	+\$29

MEASUREMENTS
Scrotal Size
Weight
EMA
Rib Fat
Rump Fat
IMF

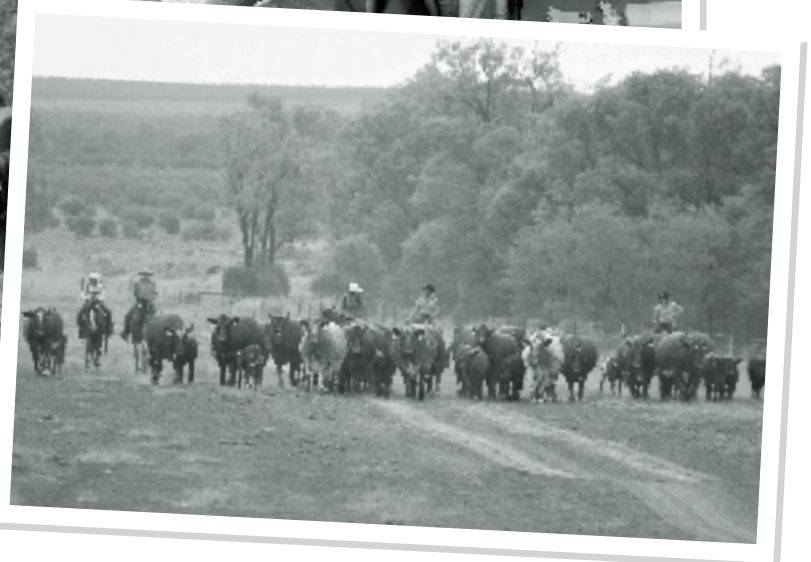
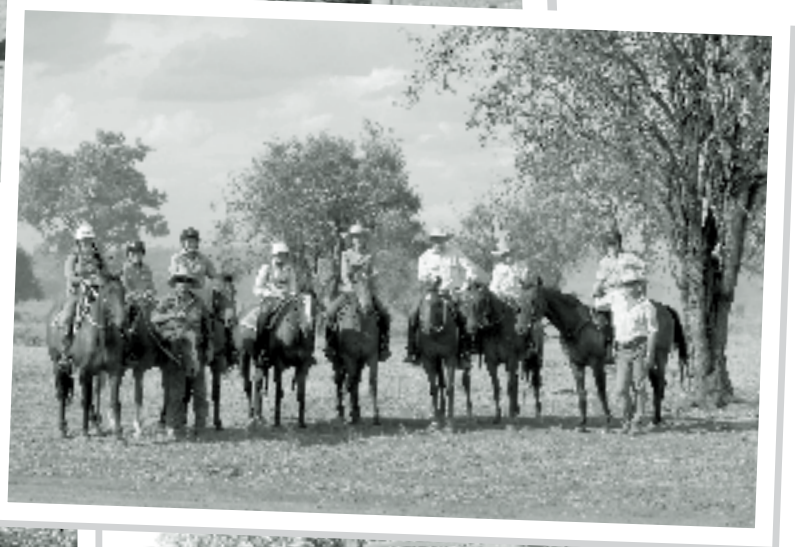
BUYER: \$:

JUNE 2017 PERFORMANCE HERDS AUSTRALIA BREEDPLAN EBVs																
	CED	CEM	GL	BW	200	400	600	MCW	MILK	SS	CWT	EMA	RIB	RUMP	RBV	IMF
EBV			+0.8	+2.7	+16	+24	+33	+21		+1.5	+27	+0.8	-0.8	-1.4	+0.6	+0.3
ACC			48%	45%	62%	60%	53%	37%		65%	47%	37%	43%	43%	42%	33%



Bull shopping in the rain – a first at The Grove!

The Yearly Branding at Meribah



The Grove.



LIVESTOCK AUCTION TERMS AND CONDITIONS OF SALE

CHAPTER ONE - PRELIMINARY

1. (a) A vendor is bound by these terms and conditions by offering livestock for sale by auction.
- (b) An agent (which includes an auctioneer) is bound by these terms and conditions by conducting an auction sale.
- (c) A buyer is bound by these terms and conditions by bidding at auction.
- (d) Competition and Consumer Act (Cth) 2010

It is unlawful for parties that are, or otherwise would be, in competition with each other to make, or give effect to, a contract, arrangement or understanding that contains a provision relating to:

- i. price-fixing; or
- ii. restricting outputs in the production and supply chain; or
- iii. allocating customers, suppliers or territories; or
- iv. bid-rigging; or
- v. collusive bidding.

Large fines and other sanctions may be imposed for unlawful conduct.

2. (a) In these terms the expression auctioneer, agent, buyer and vendor respectively includes the servants, contractors and agents of each of them. The auctioneer, agent, buyer and vendor shall be wholly responsible for the acts and omissions of their respective servants, contractors and agents. The term "auctioneer" includes, so far as the law and context permits, the vendor's agent.

(b) When used in these terms the expressions "companion animals" means all animals originating from the same property on a particular day. Where lots are split and sent to multiple establishments, then all of these animals shall be regarded as companions.

3. The following applies in interpreting these terms and conditions:

(a) The following words have the following meanings:

Fees means all levies, charges, fees, costs and other expenses incurred or relating to these terms and conditions and the sale and purchase of livestock including, without limitation, transaction levies, yard and weigh dues, cartage, advertising and rebates, and whether paid for, or incurred, by the agent;

Livestock means animals auctioned pursuant to these terms and conditions; and

Price means the amount at which the lot has been sold to the buyer referred to in clause 7 of these terms and conditions

- (i) plus any Fees and other expenses incurred in relation to the purchase of livestock that are payable by the buyer; and
- (ii) plus any GST added in accordance with clause 12.

(b) These terms and conditions are subject to legislation or regulation in the State in which the auction is conducted and in the event of any conflict then the legislation or regulation will prevail. The provisions of these terms and conditions are in addition to, and do not derogate from, the duties and rights of vendors, agents and buyers set out in legislation and regulation in the State in which the auction is conducted.

CHAPTER TWO - STANDARD TERMS OF SALE

4. Subject to any reserve price, and to the right, prior to the fall of the hammer, of the vendor to withdraw any lot without declaring the reserve, the highest bidder shall be the buyer.

5. The auctioneer has the right to bid on behalf of the vendor provided that right is notified prior to the commencement of the sale and is subject to State law.

6. A bid cannot be made or accepted after the fall of the hammer unless, in accordance with clause 8, the auctioneer decides to put the lot up again.

7. Prior to the fall of the hammer the auctioneer shall announce the last bid and receive any further bids. The last price called by the auctioneer at the fall of the hammer shall be the amount at which the lot has been sold.

8. In the event of a disputed bid, the auctioneer is the sole arbitrator of the successful bidder or the auctioneer may decide to put the lot up again. The auctioneer's decision is final.

9. The auctioneer may refuse to accept any bid which, in the auctioneer's opinion, is not in the best interest of the vendor and need not give reasons for doing so.

10. A bidder shall be deemed to be a principal unless, prior to bidding, the bidder has given to the auctioneer a copy of written authority to bid for or on behalf of another person.

11. The successful bidder at a livestock auction sale must give to the auctioneer at the fall of the hammer:
 - (a) the purchaser's name; or
 - (b) the bid card number which identifies the purchaser; or
 - (c) the name of the person on whose behalf the successful bid was made; and
 - (d) the Property Identification Code (known as the "PIC") of destination.

12. The auction shall be conducted on the basis that the bid price shall be exclusive of Goods and Services Tax (GST). GST shall be added after the fall of the hammer for those sales subject to GST.
13. The vendor warrants:
 - (a) That the vendor has (or will have) the right to sell the livestock at the time of delivery; and
 - (b) That the purchaser will obtain title on completion of the purchaser's obligations under this contract including payment.

14. If a buyer does not comply with any of these terms and conditions, which includes the requirements of State law, any livestock knocked down to that buyer may be re-sold by public auction or private contract in whatever lots and manner the auctioneer decides. The re-sale may be with or without notice and shall be at the buyer's risk. The buyer is responsible for all loss and expense arising out of a re-sale and is not entitled to any resulting profit.

15. The buyer of livestock must pay the agent the full amount of the purchase price in immediate funds on receipt of a tax invoice. Payment is required prior to delivery unless some other time for payment is specified in an agreement between the buyer and the auctioneer that was made before the fall of the hammer. If, before delivery, payment has not been made then clauses 20 to 23 apply.
16. No person may bid unless, prior to the commencement of the sale, that person has made arrangements satisfactory to the auctioneer for payment for livestock purchased. If bids in breach of this condition are inadvertently accepted, delivery shall not be given until the purchase money is paid and any law, rule or practice to the contrary is accordingly negated as far as possible.

17. (a) Cattle sold on a liveweight basis that are weighed pre-sale are at the risk and expense of the buyer upon the fall of the hammer.
- (b) Cattle sold on a liveweight basis that are weighed post-sale are at the risk and expense of the buyer immediately after weighing.
- (c) All livestock other than cattle sold on a liveweight basis are at the risk and expense of the buyer upon the fall of the hammer.

18. (a) Subject to this clause the sale is complete on the fall of the hammer.
- (b) The time for rejection is the time commencing at the fall of the hammer and ending at the first of:
 - (i) delivery is taken by a representative of the buyer;
 - (ii) departure of the animal from the purchaser's delivery pen; or
 - (iii) one hour after the last animal is:
 - a. in the case of pre-sale weighing, sold; or
 - b. in the case of post-sale weighing, weighed.

(c) During the time for rejection the buyer may reject any animal which is lame, blind or diseased where that condition existed prior to the fall of the hammer but could not be reasonably observed when the animal was in the selling pen.

(d) If the purchaser rejects an animal during the time for rejection then the sale of that animal is cancelled and the animal is returned to the vendor or sold on such terms as any buyer and the agent may agree, after the agent has disclosed the reason for rejection to that buyer.

(e) This subclause applies only to cattle which are sold in Queensland at auction for slaughter. The agent has responsibility for the prevention of loss or escape (but not death, sickness or injury) of those cattle from the time of the fall of the hammer, for delivery to and from the scales, to the buyer's delivery pen and onto the buyer's nominated transport. This responsibility ends at the earlier of those cattle boarding the buyer's nominated transport or sunset on the day after the sale. This

subclause does not apply if the agent makes an announcement to that effect prior to sale.

19. (a) Subject to the right of rejection in Clause 18, all conditions and warranties expressed or implied by the vendor are excluded from the sale to the extent that the law allows. All lots are open for inspection prior to the commencement of the sale and are sold with all faults, if any. No compensation shall be given for any faults, imperfections, errors of description, number or of any lots or otherwise.
- (b) Any claim or objection arising out of an error or misdescription in the provision of relevant information in terms of legislation or regulation concerning the National Livestock Identification Scheme (NLIS) must be made by 5:00pm on the seventh day after the fall of the hammer. No objection, request or claim against the vendor or agent in respect of such error or misdescription can be made after that time.

- (c) Any statements made by the vendor or the auctioneer whether in writing or orally to the effect that any female has been pregnancy tested or scanned positive shall mean and require only that a certificate in writing shall be supplied to the buyer signed by a qualified veterinary surgeon or certified scanner certifying that the said female has been tested or scanned on the date specified in the certificate and that in the opinion of the surgeon or scanner was pregnant on that date.
- (d) For slaughter cattle, the agent undertakes to make every reasonable effort to ensure that any NLIS cattle device number is transferred from the saleyard PIC to the purchaser's PIC on the NLIS database no later than midnight on the day of the sale.
- (e) For other slaughter livestock the agent undertakes to make every reasonable effort to ensure that the NLIS information is transferred from the saleyard PIC to the purchaser's PIC on the NLIS database no later than midnight on the day of the sale.

- (f) Where livestock has a food safety or market eligibility status derived from the National Vendor Declaration (NVD) and/or the NLIS/ERP database, the agent will inform the buyers by pre-sale catalogue and announce the status prior to the offering of those lots.
20. If delivery is made, to or possession obtained by, the buyer or its representative before full payment of the Price, then until full payment is received, the buyer:
 - (a) does not acquire title to the livestock;
 - (b) holds the livestock as bailee only for the vendor;
 - (c) must act in a fiduciary capacity in its relationship with the vendor;
 - (d) must store the stock separately so that they are readily distinguishable from other livestock owned by the buyer;
 - (e) is responsible for the safety and well being of the livestock;
 - (f) may make a bona fide sale for market value of any or all of the livestock. As between the buyer and the subsequent buyer, the sale shall be made by the buyer in his own name and not as agent for the vendor, however as between the vendor and buyer, the sale shall be made as bailee and agent for the vendor; and
 - (g) must keep and account for the proceeds of any subsequent sale separately from its other money and hold those proceeds, together with the benefits of any rights against subsequent buyers, on trust for the vendor.

21. The purchaser agrees that:
 - (a) Clause 20 creates a registrable security interest under the Personal Property Securities Act (Cth) 2009 (PPSA);
 - (b) The purchaser acknowledges the rights of the Seller (and/or the Agent if Clause 25 applies) to register a financing statement under the PPSA with respect to the security interest created by this clause;
 - (c) The livestock are collateral for the purposes of the PPSA;
 - (d) to the extent permitted, the Purchaser waives any right the Purchaser has under the PPSA to receive notices; and
 - (e) the date upon which the security interest created by this clause comes into force is the first date on which livestock are delivered pursuant to this contract.

22. The buyer may not make any claim against the vendor for actions by the vendor or its agent under clauses 20 or 21 and indemnifies the vendor and its agent against any loss, damage, costs, expenses, penalties, fines or claims suffered by the vendor, the agent or any person or entity arising from the vendor exercising its rights under clauses 20 or 21.
23. Clause 23 applies whenever the agent pays the vendor before being paid by the buyer, which the agent is not bound to do. The agent is then the del credere agent of the vendor at law.
- 23.2. The vendor hereby gives notice to the buyer of the assignments referred to in clause 23.3.
- 23.3. When this clause applies, in addition to any rights of the agent that arise by operation of law, the parties agree that, subject to clause 23.5 the agent is subrogated to all rights of the vendor under these terms and conditions against the buyer.
- 23.4. The vendor acknowledges that the agent may take enforcement, repossession or other action to recover any livestock for which the buyer has not paid in full, or the Price of such livestock, owing by the buyer under these terms and conditions:
 - (a) when this clause does not apply, as agent of the vendor (including by reselling the livestock); and
 - (b) when this clause applies, on the agent's own behalf exercising the rights of the vendor by subrogation or assignment under these terms and conditions (whether in the vendor's name or not) and where title to the livestock has passed to the agent, by selling the livestock as agent of the vendor without the agent having to account to the vendor for the proceeds of sale.

- 23.5. The agent may at any time, assign, transfer, securities or otherwise dispose of all or any of its rights under these terms and conditions and the agent, and is not bound to do so, including, without limitation, the rights assigned to it under clause 23.3.
- 23.6. The vendor hereby irrevocably appoints the agent as the vendor's attorney to:
 - (a) do at any time and in any manner as the agent thinks fit all acts necessary or desirable to perfect or improve the rights and interests afforded, or intended to be afforded, to the agent under these terms and conditions; and
 - (b) appoint one or more sub-attorneys to do anything that the agent may do as the vendor's attorney.

- 23.7. These terms and conditions do not render the agent liable to the buyer as vendor nor entitle the buyer to set off against the agent any right the buyer may have against the vendor or otherwise.
- 23.8. The buyer acknowledges that the provisions of this clause 23 are intended solely for the benefit of the agent (and its assigns) and the vendor. The liabilities and obligations of the buyer will not be in any way affected:
 - (a) by this clause 23, other than as it expressly provides; or
 - (b) by the failure of the agent or the vendor or either of them to comply with the terms of this clause 23.

- 23.9. The buyer must pay all amounts payable to the vendor or the agent under these terms and conditions without any deduction, withholding, set off or counterclaim whatsoever, whether the benefit of a deduction, withholding, set off or counterclaim is alleged to be in favour of the buyer or against the vendor or the agent in any capacity whatsoever or any other person including an assignor of the vendor's or the buyer's interests under these terms and conditions.

24. (a) The agent agrees that he is liable to pay to the vendor the Price, less such commission as is agreed between the vendor and the agent, and in the absence of any agreement such amount as is reasonable, and less the Fees that are payable by the vendor that were incurred by the agent on behalf of the vendor in relation to the sale of the livestock.
- (b) In the event that the buyer pays the Price or part of it direct to the vendor then the agent has no liability to the vendor for the amount of such payment. Further, if the agent pays the vendor any amount which the buyer also pays direct to the vendor in respect of the same livestock, then the vendor must repay the agent that amount and the agent may debit that amount to an account held in the name of the vendor by the agent.
- (c) Regardless of whether or not a sale has occurred the agent may, but is not under obligation to do so, instead of deducting payments owed to it by the vendor, debit the amount of such commission and fees to an account held in the name of the vendor by the agent.

25. (a) The auctioneer has been retained by the vendor as auctioneer for the purpose of selling the livestock comprised in the lots. The terms of

engagement between the auctioneer and the vendor do not extend to the provision of advice by the auctioneer to the vendor in relation to the safety or otherwise of the sale ring, the saleyards and the surrounding environments.

- (b) The vendor, the agent and the buyer agree to comply with their several duties under the Australian Animal Welfare Standards and Guidelines for the Land Transport of Livestock and further to consign, manage, receive, transport and handle livestock in accordance with any other or additional requirements of animal welfare legislation specific to the jurisdiction in which livestock are consigned, managed, received, transported and handled in the course of the auction process.

CHAPTER THREE - VENDOR WARRANTY FOR CORRECT PRESENTATION AND DECLARATION

26. This chapter applies only in the case of livestock and their companion animals sold at auction for slaughter when the buyer is the slaughterer and the livestock are transported direct from the sale yard to the meatworks at which they are slaughtered. This chapter does not apply if the buyer is a trader who subsequently resells the livestock to a slaughterer. A slaughterer is any person who pays the AMPC Processor levy.

27. The warranty of a vendor is that livestock and their companion animals offered for sale at auction:

- (a) pass government and other regulatory authority requirements and inspections at the time of slaughter;
- (b) are of merchantable quality;
- (c) carry an NLIS device in accordance with State law;
- (d) in the case where a representation has been made in the pre-sale catalogue that the livestock have particular characteristics or are fit for a particular purpose or market, and such representations are based on information in any document, the livestock will have those characteristics or will be fit for the particular purpose or market; and
- (e) all information in any document provided by the vendor is true, complete and correct in all material respects.

28. In the event of a breach by the vendor of the vendor's warranty and provided such breach is notified by the buyer to the agent by 5:00pm on the 7th day after the fall of the hammer then the buyer is not liable to pay the portion of the Price of such of the vendor's livestock to which the breach applies.

29. However if the breach by the vendor is such that the livestock are not rejected outright but are instead downgraded then the buyer will pay the value of the livestock at their next highest and best use.

30. In the case of a breach by the vendor of the vendor's warranty then the vendor will also be liable to the buyer for any further losses which the buyer might establish but the buyer will take all reasonable steps in co-operation with the agent and vendor to mitigate both the effect of the breach and the amount of any loss.

31. Where a sentinel animal of a lot tests positive for chemical residue, or foreign material contamination and provided such test is certified and notified as required by these vendor warranty terms, then:

- (a) the buyer will be entitled to delay payment for the price of all livestock in that lot only; or
- (b) the vendor has the option, at the vendor's cost, of collecting the companion animals, if allowed by law, or of having the livestock slaughtered in which event the risk of further condemnations will be that of the vendor. Where product integrity is potentially jeopardised, the Processor has the right to refuse slaughter and send the livestock back to the consigning property at the vendor's cost.

32. The auctioneer is liable to the buyer in respect of any breach of the vendor's warranty arising out of:

- (a) any error, by the auctioneer, of transcription of information from the NVD completed by the vendor to the pre-sale catalogue or the buyers post-sale summary;
- (b) any failure by the auctioneer to notify the buyer, prior to bidding, of any breach by the vendor of the warranty of the vendor if the buyer establishes that the agent knew of such breach prior to the sale; and
- (c) any failure by the auctioneer to announce prior to bidding, or disclose in the pre-sale catalogue, that the vendor has failed to provide a NVD that is complete in all material aspects.

CHAPTER FOUR - OWNERS RISK FOR CONDITION OF CATTLE

33. This chapter applies only in the case of cattle and their companion animals sold at auction for slaughter when the buyer is the slaughterer and the cattle are transported direct from the sale yard to the meatworks at which they are slaughtered. This chapter does not apply if the buyer is a trader who subsequently resells cattle to a slaughterer. A slaughterer is any person who pays the AMPC Processor levy.

34. Owners risk reflects the producer's responsibility to provide slaughter cattle for sale that are fit for human consumption. Cattle are fit for human consumption if they are not condemned as unfit by government. Owners risk applies if the condemnation is due to a condition in the animal which the buyer establishes, by the relevant government certificate, existed prior to the fall of the hammer.

35. A buyer with the benefit of owners risk protection is not liable to pay the Price of that animal to the vendor. The buyer remains nevertheless liable for all costs incurred after the fall of the hammer in transport, slaughter, testing and disposal of the animal.

36. Owners risk protection is available to the buyer of cattle to which this chapter applies if all of the following are satisfied:

- (a) a certificate is issued by government which states the relevant NLIS RFID tag number and PIC, the date of the certificate, the reason for condemnation and that the reason for condemnation existed prior to the fall of the hammer;
- (b) the certificate is received by the selling agent either in its original form or by fax or electronic communication in the form of data, text or imaging by 5:00pm on the 7th day after the fall of the hammer; and
- (c) if the condemnation is due to chemical residue the certificate follows testing in a government approved laboratory which establishes maximum residue limits in excess of the Australian limit.

37. Owners risk does not apply, and the buyer must pay for the cattle, if the reason for condemnation is any of bruising, fever, partial condemnation or emaciation.

CHAPTER FIVE - NOTICES REQUIRED BY LEGISLATION

NSW Property, Stock and Business Agents Act 2002 Warnings

Penalties for collusive practices. It is an offence against the Property, Stock and Business Agents Act 2002 for a person to do any of the following as a result of a collusive practice, or to induce or attempt to induce another person by a collusive practice to do any of the following:

- (i) to abstain from bidding; or
- (ii) to bid to a limited extent only; or
- (iii) to do any other act that might prevent free and open competition.

Severe penalties may be imposed on persons convicted of collusive practices.

The auctioneer has the right to make one bid on behalf of the vendor if the auctioneer clearly and precisely announces that fact prior to the sale.

Tasmania Legislation. An auctioneer conducting a public auction must not appear to acknowledge the making of a bid if no bid was made. A person must not participate in collusive practices by way of making or receiving an unlawful promise to abstain from bidding, not to bid except to a limited extent or to do any other thing which may prevent free and open competition.

WA Auction Sales Act 1973 s31 NOTICE

It is an offence to:

- (i) induce or attempt to induce another person to abstain from bidding by means of a promise, expressed or implied, that the other person will have the right to elect to take over as buyer or to toss or draw lots to establish who is to become the owner;
- (ii) abstain or agree to abstain from bidding as a result of such a promise;
- (iii) knowingly enter or permit or cause to be entered in the auctioneer's record any name other than that of the actual successful bidder;
- (iv) enter in the auctioneer's record the name of the buyer other than that of the actual successful bidder; or
- (v) in the case of successful bidder supply wrong information as to the name of the buyer to the auctioneer or to any person, firm or corporation on whose behalf the sale is conducted.

The vendor, or any person on behalf of the vendor, or the auctioneer have the right to make no more than three bids.



The Grove.

Australia's Premier Performance Shorthorn Herd

34th Annual On-Property Bull Sale

ACKNOWLEDGEMENT OF PURCHASE

PURCHASER NAME:

TRADING NAME:

ADDRESS:

TEL: B/H

A/H

MOBILE:

EMAIL:

PROPERTY IDENTIFICATION CODE (PIC):

I HEREBY ACKNOWLEDGE THAT I AM THE PURCHASER OF THE FOLLOWING LOTS:

I further acknowledge my agreement to be bound by the Terms and Conditions of Sale displayed at auction and read by the Auctioneer prior to sale. In particular I acknowledge that:

1. The full purchase price is payable on the fall of the hammer + 10% GST.
2. The Auctioneer reserves the right to withhold delivery until cheques tendered in payment have been cleared by the purchaser's bank.
3. Without prejudice to or without in any way releasing me from my foregoing obligation I agree to pay interest on the outstanding purchase price from the date hereof to the date of payment at the rate calculated in accordance with condition 21 (b) of the Terms and Conditions of Sale.
4. Excepting those conditions and warranties implied by the Trade Practice Act or any applicable state legislation which cannot be contractually excluded and excepting conditions and warranties expressly contained in the Terms and Conditions of Sale, all express or implied conditions, statements or warranties, statutory or otherwise, are excluded from this sale.

IS INSURANCE REQUIRED? NO YES, INSURE FOR (PERIOD):

AMOUNT: \$

TRANSPORT ARRANGEMENTS:

SETTLING AGENT:

BRANCH:

Signed by the above named Purchaser.

PURCHASER SIGNATURE:

14 SEPTEMBER 2017

PLEASE NOTE: For those clients who have arranged for their purchases to stay at The Grove for a period following the sale, we insist that you, the purchaser, insure your purchases for the period they remain in our care.

AGENT CONTACT DETAILS



Landmark Stud Stock Qld

(07) 4637 3000 | Colby Ede 0417 265 980

Trent McKinlay 0429 004 737 | Mark Scholes 0409 229 651

Col Campbell AuctionsPlus Coordinator, Qld/NT 0429 068 810

www.landmark.com.au

Landmark Area Contacts:

BILOELA (07) 4992 4411
Ross Jorgensen 0427 124 069

BLACKALL (07) 4657 4299
Carl Jungmann 0488 228 412
Boyd Curran 0417 707637

BOWEN (07) 4785 2068
Rob Wilde 0429 004 732

CHARLEVILLE (07) 4654 1711
Marc McKellar 0427 237 510
Matthew Peters 0477 314 197

CHARTERS TOWERS (07) 4787 1666
Tony Bowen 0428 261 371
Shane Stretton 0427 158 115
Kerry Mills 0429 470 952

CHINCHILLA (07) 4662 7806
Terry Ryan 0418 260 063

CLONCURRY (07) 4769 3100
Bo Scoble 0417 671 589

CUNNAMULLA (07) 4655 1799
Neal Elliott 0427 773 868

DALBY (07) 4669 0000
Brock Simpkins 0408 278 818
John Malone 0428 668 639
Chris Simpkins 0437 330 172

EMERALD (07) 4982 2055
Matt Beard 0428 765 687
Terry Ray 0427 821 177
Bryton Virgo 0477 318 224

GOONDIWINDI (07) 4671 1155
Darren Smith 0427 623 860
Scott Bell 0427 187 477

INJUNE (07) 4626 1268
Don Kelly 0429 804 492

LONGREACH (07) 4652 7000
Boyd Curran 0417 707 637

MACKAY (07) 4952 4377
Tony Dwyer 0427 589 437
Paul Cooper 0419 698 920

MAREEBA (07) 4092 3711
Alan Mackenzie 0429 914 318
Bob Lockhart 0409 774 398
Jake Henshaw 0407 902 941

QUILPIE (07) 4656 1155
Ben Hall 0428 866 415

RICHMOND (07) 4741 3311
Bo Scoble 0417 671 589

ROCKHAMPTON (07) 4927 6188
Michael Lynch 0419 611 602
Julian Laver 0427 169 862
James Saunders 0418 538 830
Noel Hamilton 0407 160 554

ROMA (07) 4622 1088
Jake Smith 0429 083 841
Rod Turner 0429 004 741
Andrew Holt 0427 088 996
Brad Vidler 0427 409 616
Brodie Hurley 0439 572 150

MITCHELL (07) 4623 1144
Steve Hancock 0488 439 588

ST GEORGE (07) 4625 1455
Philip Manns 0438 756 245

TAROOM (07) 4627 3255
David McPaul 0428 721 914
Luke Gasby 0428 716 682

TOOWOOMBA (07) 4637 3000
Simon Booth 0438 756 245
Andrew Costello 0429 485 191

WANDOAN (07) 4627 4433
Joe Keppel 0427 274 299
Dane Pearce 0439 917 428

WINTON (07) 4657 1600
Boyd Curran 0417 707 637
Eddie Lah 0429 969 030



A RURALCO PARTNER

GDL Stud Stock

(07) 4669 6955

Harvey Weyman-Jones 0414 941 788

Peter Brazier 0407 525 983 | Mark Duthie 0448 016 950

www.gdlrural.com.au

GDL Area Contacts:

BLACKALL (07) 4657 6000
Jack Burgess 0427 576 949
Andrew Carcary 0428 271 799

CUNNAMULLA (07) 4655 2038
Tony Lilburne 0458 562 550
Luke Mills 0438 662 117

DALBY (07) 4669 6955
Peter Daniel 0428 790 967
Anthony O'Dwyer 0408 195 114
Joe Lehman 0448 802 060

GOONDIWINDI (07) 4671 5025
Alex Paterson 0407 655 815

KINGAROO
Ryan Sullivan 0407 176 062
Brad Cavanagh 0428 176 062

LONGREACH
Jack Burgess 0427 576 949
Matt McLane 0448 855 750

MEANDARRA (07) 4665 6111
Russell Jorgensen 0428 880 411
Billy Dakin 0429 896 841

MILES (07) 4627 1900
Owen Brockhurst 0428 697 055
Will Loudon 0459 149 890

MOURA
James Bensley 0447 879 300

QUILPIE (07) 4656 2550
Tony Lilburne 0458 562 550
Luke Mill 0438 662 117

ROMA (07) 4622 7799
John Sims 0428 221 727
Geoff Maslen 0427 697 527
Jason Belz 0428 221 586
Nick Shorten 0429 624 091

ST. GEORGE (07) 4625 1983
Andrew Wardle 0427 255 560
Anthony Hyland 0429 698 612

TAROOM (07) 4627 3027
Graeme McAdam 0428 273 028

WANDOAN (07) 4627 5555
Kerry Flanagan 0458 274 369



Shorthorn Infusion

Shorthorn infusion working really well for Arrabury Pastoral at their Blackall properties, giving real flexibility to hit a number of markets, as well as creating a really productive future F1 cow.



The Grove.

Australia's Premier Performance Shorthorn Stud



Increasing Your MSA Index Is Very Achievable

Since the introduction of the MSA section in 2010 to Australia's largest and most prestigious supply chain competition – the RNA's Paddock to Palate – The Grove has claimed the Champion MSA Pen of 6 in three of the five years and Reserve Champion Pen twice.

Understanding what drives the eating quality of beef is important in being able to implement improvement strategies to increase the return/head from your farm gate. In 2014–15 young milk/two teeth grass-fed cattle which met MSA specs received an additional 33c/kg liveweight over similar type cattle not meeting MSA specs. This equates to close to \$100/head advantage when applied to the average carcass weight for that period of time.

Key factors impacting MSA Index are:

■ **HGP status.** Non-treated cattle are approx 5 index units higher.

- **Saleyards.** Animals directly consigned from farm are approx 5 units higher.
- **Breed Content.** A tropical content of 100% can lower MSA Index 6.3 units.
- **MSA Marbling.** An increase of 10 on the MSA marbling score increases your index score by approx 0.15, which is a far greater return for improvement than traits such as Rib Fat, Ossification, HSCW, Sex and Hump Height.

In summary, to maximise your MSA Index scores, the simplest ways would be to:

- Breed as low percentage tropical content as your country will allow,
- Consign your cattle directly to the processor yourself or get your preferred agent to book them,
- Minimise the use of HGPs, and
- Select genetics that carry all the relevant \$ traits such as growth, with particular selection for marbling, to maximise your chances to increase your MSA Index.